

Project No: **BDHRN002**Job Card No **0011**

Notif.No.: 10049216

Activity: **1021**

Rev No: 20000622

Model.: F900EX

Sheet 1 of 2

A/C Regn: **D-AHRN**

Serial No.: 096

Type: F900EX

Starting Phase: Remove

Starting Work Centre: FALCON A/C TEAM

Job Description: **SERV EPS 2**

ETOPS A/C: No

RVSM A/C: No

Warranty: -

ATA: 33

Work Center	
FALCON A/C	
MTX AVIO DEPT	
COMPONENT	

Zone: 200**Access Required for this task:**

PAX

Corrective Action

0001	Access Performed						 Order: 80069302 Operation: 0010 Phase: Remove - scheduling activity Work Center:FALCON A/C TEAM
	Accomplished		Inspected				
	Pers. No.	Date	Pers. No.	Date			
	Stamp		Stamp				
	Completed & Confirmed on SAP IAW MOE 2.13.						
0002	Task carried out in accordance with the attached Customer Card that quotes the Operator code detailed below.						 Order: 80069302 Operation: 0020 Phase: Remove - scheduling activity Work Center:MTX AVIO DEPT
	Accomplished		Inspected				
	Pers. No.	Date	Pers. No.	Date			
	Stamp		Stamp				
	Completed & Confirmed on SAP IAW MOE 2.13.						
0003	Task carried out in accordance with the attached Customer Card that quotes the Operator code detailed below.						 Order: 80069302 Operation: 0030 Phase: Remove - scheduling activity Work Center:COMPONENT RPR
	Accomplished		Inspected				
	Pers. No.	Date	Pers. No.	Date			
	Stamp		Stamp				
	Completed & Confirmed on SAP IAW MOE 2.13.						

OEM Code: 33-50-33-610-801-02

Form No: JA-SAP-MTX-002

Operator Code: 33-50-33-610-801-02

Printed by: ADAMOVIC G



Printed: 03.09.2012

13:34:17

Print No: 1

Project No: **BDHRN002**Job Card No **0011**

Notif.No.: 10049216

Activity: **1021**

Rev No: 20000622

Model.: F900EX

Sheet 2 of 2

A/C Regn: **D-AHRN**

Serial No.: 096

Type: F900EX

Starting Phase: Remove

Starting Work Centre: FALCON A/C TEAM

Job Description: **SERV EPS 2**

ETOPS A/C: No

RVSM A/C: No

Warranty: -

ATA: 33

Work Center	
FALCON A/C	
MTX AVIO DEPT	
COMPONENT	

0004	Access Closed						Order: 80069302 Operation: 0040 Phase: Remove - scheduling activity Work Center: FALCON A/C TEAM
	Accomplished		Inspected				
	Pers. No.	Date	Pers. No.	Date			
	Stamp		Stamp				

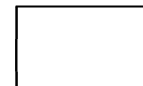
Completed & Confirmed on SAP IAW MOE 2.13.

Defect Card Raised

Components Removed/Installed					
	Part Number	Part Name	S/N	Location	Comm. Off/On
OFF					
ON					
OFF					
ON					
OFF					
ON					
OFF					
ON					

Occurance Report Raised? YES ☐

Operations Above & Notifications Completed IAW MOE 2.13.



OEM Code: 33-50-33-610-801-02

Operator Code: 33-50-33-610-801-02

Form No: JA-SAP-MTX-002

Printed by: ADAMOVIC G



Printed: 03.09.2012

13:34:17

Print No: 1

Operator: **HERON AVIATION**

Work Card No.: **33.180**

Serial No.: **096**

Model: **FALCON 900EX**

Reg No.: **D-AHRN**

Workorder No.: _____

Due At	Date	A/C HRS	AFL	APH			
Accomplished	25-JAN-2013						

TECHNICIAN SIGNATURE: _____ KIND OF CERTIFICATE & NO.: _____

INSPECTED BY: _____ KIND OF CERTIFICATE & NO.: _____

33-50-33-900-801-02

RIGHT COCKPIT EMERGENCY LIGHTING (EPS 2) POWER SUPPLY

AMM 33-50-33-900-801

REASON REMOVED: (CHECK ONE)	<input type="checkbox"/> TIME EXPIRED	<input type="checkbox"/> FAILURE	<input type="checkbox"/> WORN	<input type="checkbox"/> LOANER	<input type="checkbox"/> SCHEDULING CONV
	<input type="checkbox"/> MOD/UPGRADE	<input type="checkbox"/> SERVICE	<input type="checkbox"/> ENGINE CHANGE	<input type="checkbox"/> TIRE CHANGE	<input type="checkbox"/> SWAP/TRBLE SHOOT <input type="checkbox"/> DAMAGED <input type="checkbox"/> UNKNOWN
If removed P/N & S/N information is incorrect please provide details below.					
REMOVED P/N	D734-02-001		S/N	1240	
INSTALLED P/N			S/N		
INSTALLED TSN	MOS	INSTALLED TSO	MOS	TIME SINCE REPAIR	MOS
	HRS		HRS		
	LDGS		LDGS		
				WARRANTY TIME REMAINING	MOS
					HRS
					LDGS
				TECH:	INSP:

REMARKS : _____

Note: INITIAL THE SERVICE TASKS BELOW WHICH WERE ACCOMPLISHED DURING CHANGE. IF TASKS WERE NOT ACCOMPLISHED, RECORD TIME ACCRUED SINCE TASK WAS LAST ACCOMPLISHED OR CHECK CONTINUE TIME (CT).

TECH	INSP	LABOR-HRS HRS.MINS	TIME ACCRUED	CONTINUE TIME
------	------	-----------------------	-----------------	------------------

33-50-00-720-801-02 FUNCTIONAL TEST NO.2 EMERGENCY LIGHTING (EPS 2) POWER SUPPLY SYSTEM

☐

REMARKS : _____

AMM 33-50-00-720-801

#>33-50-33-610-801 SERVICING NO.2 EMERGENCY LIGHTING (EPS 2) POWER SUPPLY

☐

RECORD DATE OF SERVICE ____/____/____

AMM 33-50-33-610-801

REMARKS : _____

33-50-37-960-802-02 DISCARD RIGHT COCKPIT EMERGENCY LIGHTING (EPS 2) POWER SUPPLY BATTERY PACK

☐

REMARKS : _____

AMM 33-50-37-960-802

Operator: **HERON AVIATION**

Work Card No.: **33.180**

Serial No.: **096**

Model: **FALCON 900EX**

Reg No.: **D-AHRN**

Workorder No.: _____

AREA SUMMARIES

F3 COCKPIT

33-50-33-900-801-02 RIGHT COCKPIT EMERGENCY LIGHTING (EPS 2) POWER SUPPLY

SOURCE SUMMARIES

956 MPD 05-20-33 PAGE NO.:PAGE 1/2 REF: 33-50 EMERGENCY LIGHTING DATE: MAR 09/2012 2

33-50-00-720-801-02 FUNCTIONAL TEST NO.2 EMERGENCY LIGHTING (EPS 2) POWER SUPPLY SYSTEM

33-50-33-610-801-02 SERVICING NO.2 EMERGENCY LIGHTING (EPS 2) POWER SUPPLY

956 MPD 05-20-33 PAGE NO.:PAGE 2/2 REF: 33-50 EMERGENCY LIGHTING DATE: MAR 09/2012 2

33-50-37-960-802-02 DISCARD RIGHT COCKPIT EMERGENCY LIGHTING (EPS 2) POWER SUPPLY BATTERY PACK

971 SMM 05-20-00 PAGE NO.:PAGE 3 REF: 33 - BATTERY DATE: MAR 09/12 B

33-50-37-960-802-02 DISCARD RIGHT COCKPIT EMERGENCY LIGHTING (EPS 2) POWER SUPPLY BATTERY PACK

FALCON 900EX AIRCRAFT MAINTENANCE MANUAL

TASK 33-50-33-900-801

REMOVAL / INSTALLATION OF THE EMERGENCY POWER SUPPLIES

1. OVERVIEW OF THE JOB

Operation codes:

- | | |
|-----------------------|---|
| • 33-50-33-900-801-01 | EPS 1 (L3LW) |
| • 33-50-33-900-801-02 | EPS 2 (R3LW) |
| • 33-50-33-900-801-03 | EPS 3 (4LW) |

2. LOGISTICS

A. Tools and Ground Support Equipment

Reference	Designation	Quantity
• F7XC202000008	TOOL BOX	

B. Access

Reference	Designation
• PAX	PASSENGER DOOR

C. Miscellaneous

- CIRCUIT BREAKER LOCKOUT (LOCAL PROCUREMENT)

3. PRELIMINARY STEPS

Refer to fig. 1

- A. On cockpit circuit breaker panel (10PP), disengage "EMERG LIGHTS" circuit breaker (1LW).
- B. Secure the disengaged circuit breaker with a circuit breaker lockout.

4. REMOVAL

Refer to fig. 2

- A. Gain access to the relevant emergency lighting EPS:
 - (L3LW) located on the LH side between frames 4 and 5,
 - (R3LW) located on the RH side between frames 4 and 5,
 - (4LW) located on the RH service strip between frames 16 and 17.
- B. Disconnect electrical connector (1).
- C. Unscrew the four screws (2).
- D. Recover washers (3).
- E. Remove the relevant emergency lighting EPS.

FALCON 900EX AIRCRAFT MAINTENANCE MANUAL

5. INSTALLATION

Refer to **fig. 2**

- A. Install the relevant emergency lighting EPS.
- B. Install washers (3).
- C. Screw the four screws (2).
- D. Connect electrical connector (1).

6. TEST AFTER INSTALLATION

Refer to **fig. 1** and **fig. 3**

CAUTION: THE BATTERY OF EPS MUST BE USED ONLY FOR A SHORT TIME. PERFORM THE NEXT CHECK QUICKLY TO SAVE THE BATTERY POWER CONSUMPTION.

- A. On the overhead panel, set "EMERG LIGHTS" selector switch (**2LW**) to "ARM" (normal in-flight position).

Check that:

- if emergency lighting **EPS 1 (L3LW)** has been removed, pilot dome light (**L7LH**) illuminates,
- if emergency lighting **EPS 2 (R3LW)** has been removed, copilot dome light (**R7LH**) illuminates,
- if emergency lighting **EPS 3 (4LW)** has been removed, "EXIT" sign (**10LW**) illuminates.

- B. Set "EMERG LIGHTS" selector switch (**2LW**) to "OFF".

7. FINAL STEPS

Refer to **fig. 1**

- A. On cockpit circuit breaker panel (**10PP**), remove the circuit breaker lockout from "EMERG LIGHTS" circuit breaker (**1LW**).
- B. Engage "EMERG LIGHTS" circuit breaker (**1LW**).

FALCON 900EX AIRCRAFT MAINTENANCE MANUAL

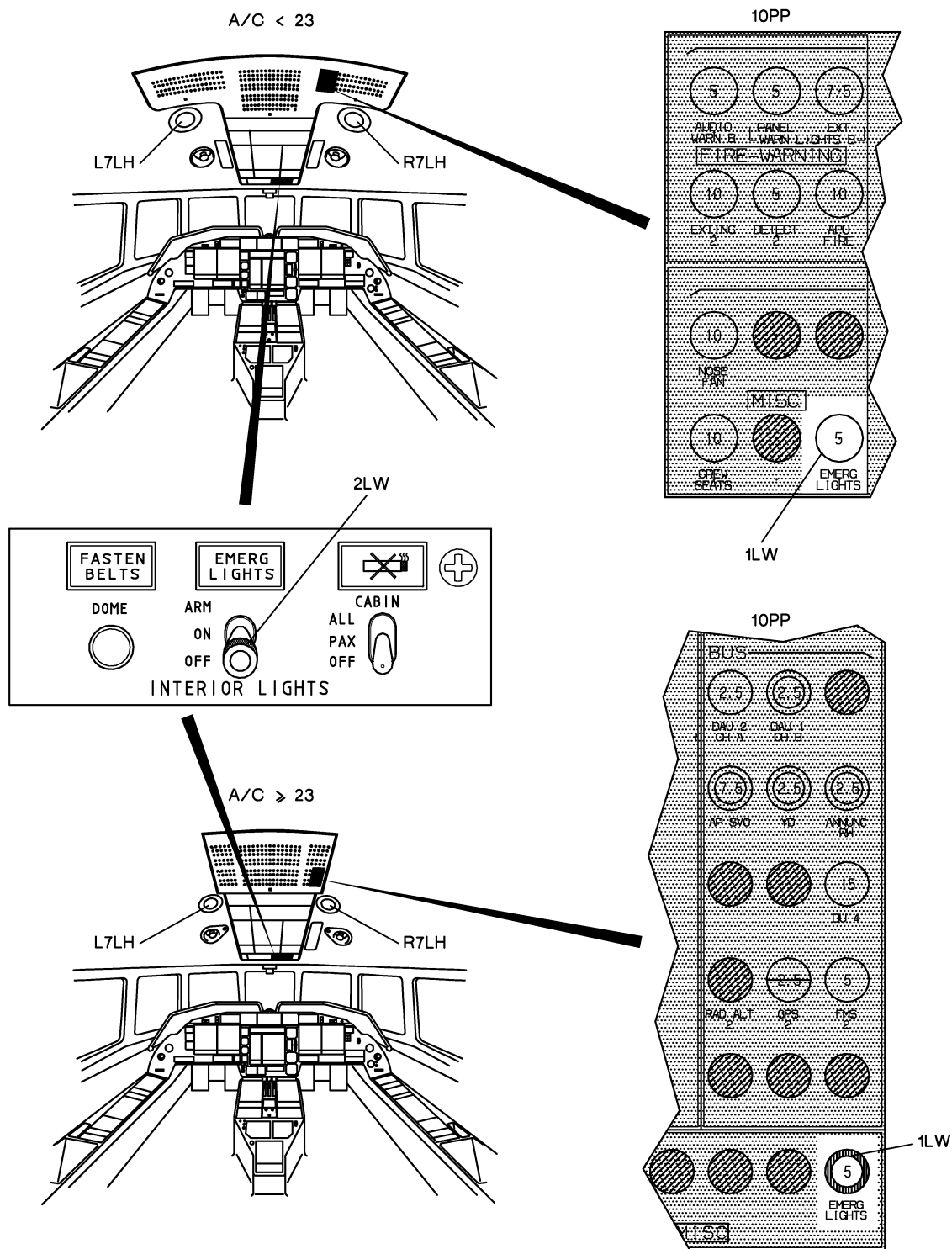


Figure 1: Location of Cockpit Controls and Pilot/Copilot Dome Lights

FALCON 900EX AIRCRAFT MAINTENANCE MANUAL

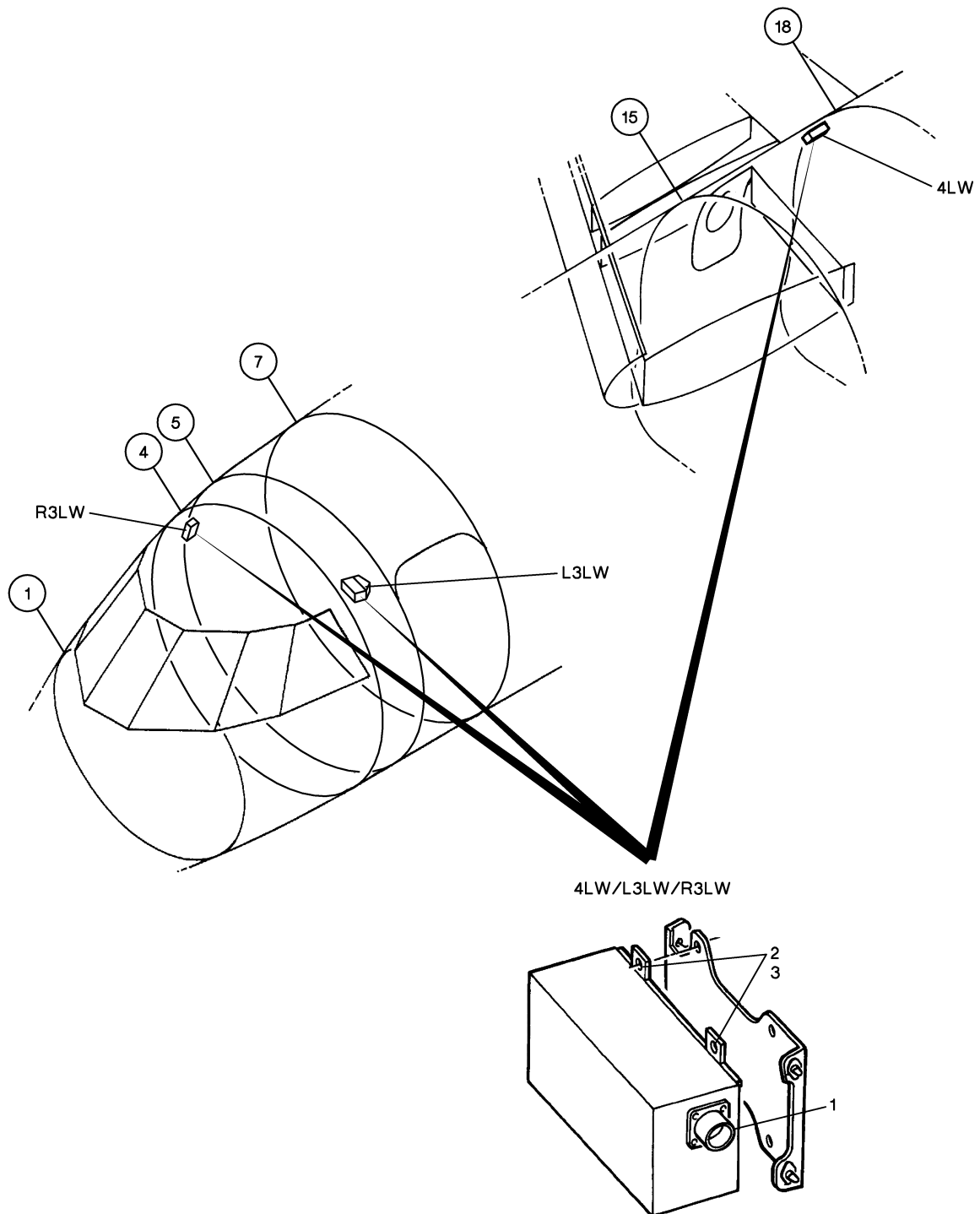
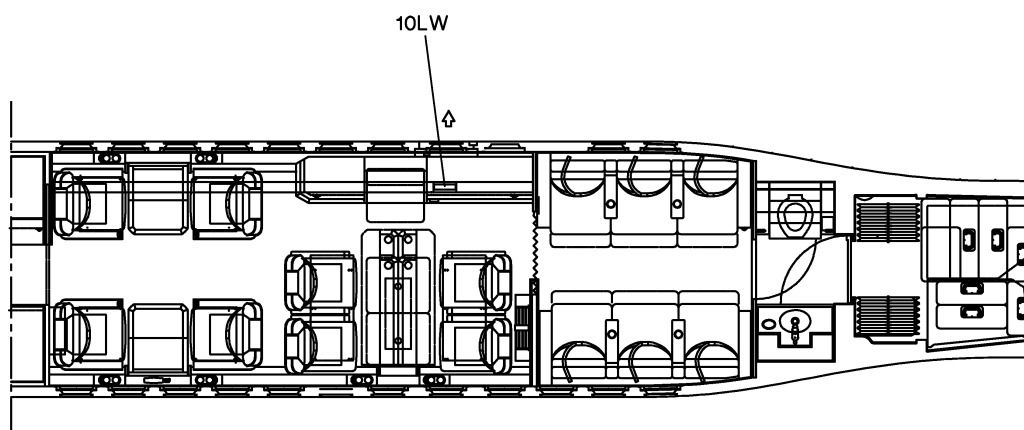


Figure 2: Removal/Installation of Emergency Lighting EPS

FALCON 900EX AIRCRAFT MAINTENANCE MANUAL



NOTE: CABIN LAYOUT MAY VARY DEPENDING ON AIRCRAFT

Figure 3: Location of "EXIT" sign (10LW)

FALCON 900EX AIRCRAFT MAINTENANCE MANUAL

TASK 33-50-00-720-801 FUNCTIONAL TEST OF THE EMERGENCY LIGHTING SYSTEM

1. OVERVIEW OF THE JOB

Operation codes:

- | | |
|-----------------------|-----------------------|
| • 33-50-00-720-801-01 | EPS 1 (L3LW) |
| • 33-50-00-720-801-02 | EPS 2 (R3LW) |
| • 33-50-00-720-801-03 | EPS 3 (4LW) |

2. LOGISTICS

A. References

Reference

- **24-00-00-860-801**
- **33-50-33-610-801**
- **33-50-37-900-801**

Designation

ENERGIZATION / DE-ENERGIZATION OF THE AIRCRAFT
SERVICING OF THE EMERGENCY POWER SUPPLIES
REMOVAL / INSTALLATION OF THE EPS BATTERY PACKS (PAGE)

B. Energy

- ELECTRICAL

C. Access

Reference

- **PAX**

Designation

PASSENGER DOOR

3. PRELIMINARY STEPS

- A. Connect the electrical Ground Power Unit (Refer to **TASK 24-00-00-860-801**, paragraph "Connection of the Electrical Ground Power Unit").
- B. Energize the aircraft systems (Refer to **TASK 24-00-00-860-801**, paragraph "Energization with the Electrical Ground Power Unit").

4. TEST OF THE EMERGENCY LIGHTING

Refer to **fig. 1**, **fig. 2** and **fig. 3**

- A. On the overhead panel, set "EMERG LIGHTS" selector switch (**2LW**) to "ON" (test position).

Check that:

- the emergency lights illuminate,
- "EMERG LIGHTS" indicator light (**5LW**) is illuminated.

- B. Set "EMERG LIGHTS" selector switch (**2LW**) to "ARM" (normal in-flight position).

Check that:

- the emergency lights extinguish,
- "EMERG LIGHTS" indicator light (**5LW**) extinguishes.

FALCON 900EX AIRCRAFT MAINTENANCE MANUAL

C. On circuit breaker panel (**10PP**), disengage "EMERG LIGHTS" circuit breaker (**1LW**).

D. Check that the emergency lights illuminate.

E. Keep the emergency lights illuminated for 10 minutes.

For this time, check that the following emergency lights are illuminated:

- the emergency lights supplied by emergency lighting EPS (**L3LW**): "EXIT" sign (**7LW**), passenger door spotlights (**8LW**)/(**9LW**) and pilot dome light (**L7LH**),
- the emergency lights supplied by emergency lighting EPS (**R3LW**): copilot dome light (**R7LH**) and "TO UNLOCK MOVE UPWARD THE YELLOW HANDLE" door sign (**6LW**),
- the emergency lights supplied by emergency lighting EPS (**4LW**): emergency "EXIT" sign (**10LW**), "PULL HERE TO OPEN" sign (**15LW**), emergency exit handle light (**14LW**), outside emergency exit light (**11LW**) and evacuation light (**12LW**).

F. Check that the lighting intensity does not decrease during the 10 minutes.

NOTE: If the lighting intensity decreases unexpectedly before the 10 minutes have elapsed:

- perform a quick charging (see paragraph "Quick charge"),
- repeat the test (paragraphs 4.C to 4.F),
- if the test fails again, replace the battery pack (Refer to **TASK 33-50-37-900-801**).

G. Set "EMERG LIGHTS" selector switch (**2LW**) to "ON".

Check that:

- the emergency lights remain illuminated,
- "EMERG LIGHTS" indicator light (**5LW**) illuminates.

H. Set "EMERG LIGHTS" selector switch (**2LW**) to "OFF".

Check that:

- the emergency lights extinguish,
- "EMERG LIGHTS" indicator light (**5LW**) extinguishes.

I. Charge the batteries by performing a servicing or a quick charge:

(1) Servicing of emergency lighting EPS.

- (a) Set "EMERG LIGHTS" selector switch (**2LW**) to "OFF".
- (b) De-energize the aircraft systems (Refer to **TASK 24-00-00-860-801**, paragraph "De-energization with the Electrical Ground Power Unit").
- (c) Disconnect the electrical Ground Power Unit (Refer to **TASK 24-00-00-860-801**, paragraph "Disconnection of the Electrical Ground Power Unit").
- (d) Perform a servicing of emergency lighting EPS (Refer to **TASK 33-50-33-610-801**).

(2) Quick charge.

- (a) Engage "EMERG LIGHTS" circuit breaker (**1LW**).
- (b) Set "EMERG LIGHTS" selector switch (**2LW**) to "ARM".

FALCON 900EX AIRCRAFT MAINTENANCE MANUAL

- (c) Perform a quick charging of the emergency lighting battery packs, using the aircraft supply for at least 30 minutes.
- (d) Set "EMERG LIGHTS" selector switch (**2LW**) to "OFF".
- (e) De-energize the aircraft systems (Refer to **TASK 24-00-00-860-801**, paragraph "De-energization with the Electrical Ground Power Unit").
- (f) Disconnect the electrical Ground Power Unit (Refer to **TASK 24-00-00-860-801**, paragraph "Disconnection of the Electrical Ground Power Unit").

FALCON 900EX AIRCRAFT MAINTENANCE MANUAL

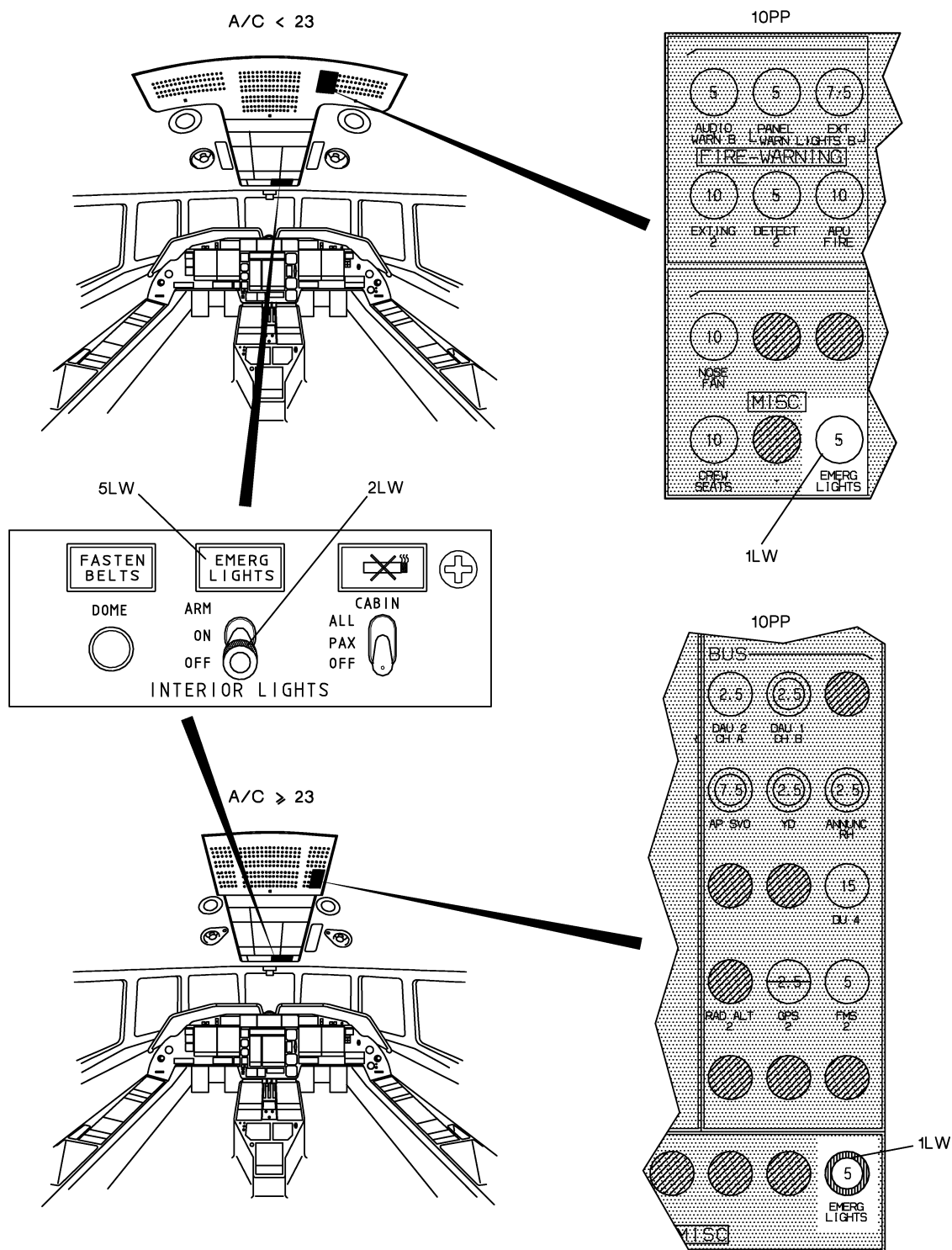
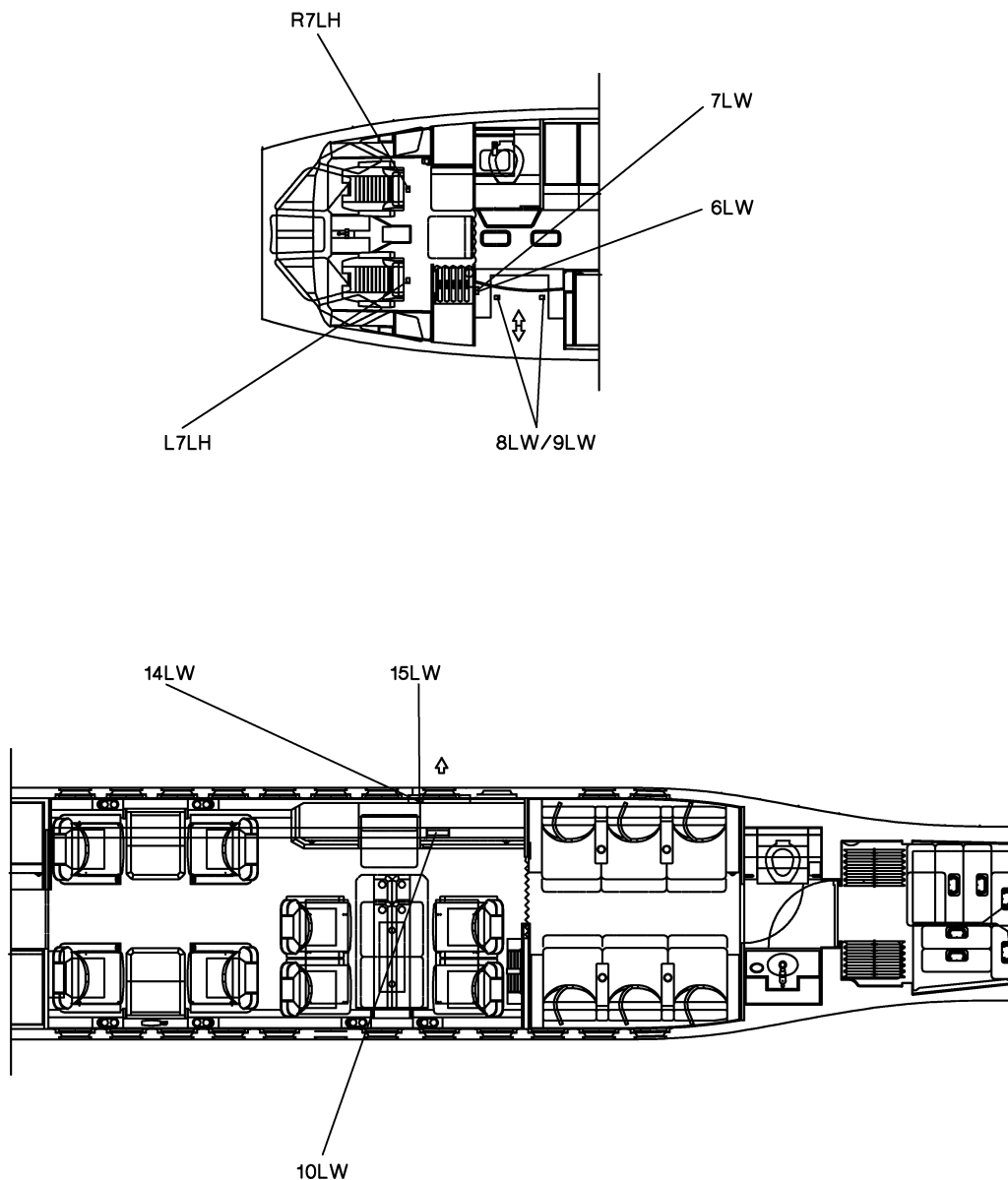


Figure 1: LOCATION OF COCKPIT CONTROLS

FALCON 900EX AIRCRAFT MAINTENANCE MANUAL



NOTE : CABIN LAYOUT MAY VARY DEPENDING ON A/C

Figure 2: LOCATION OF THE EMERGENCY LIGHTING (INTERIOR SECTION)

FALCON 900EX AIRCRAFT MAINTENANCE MANUAL

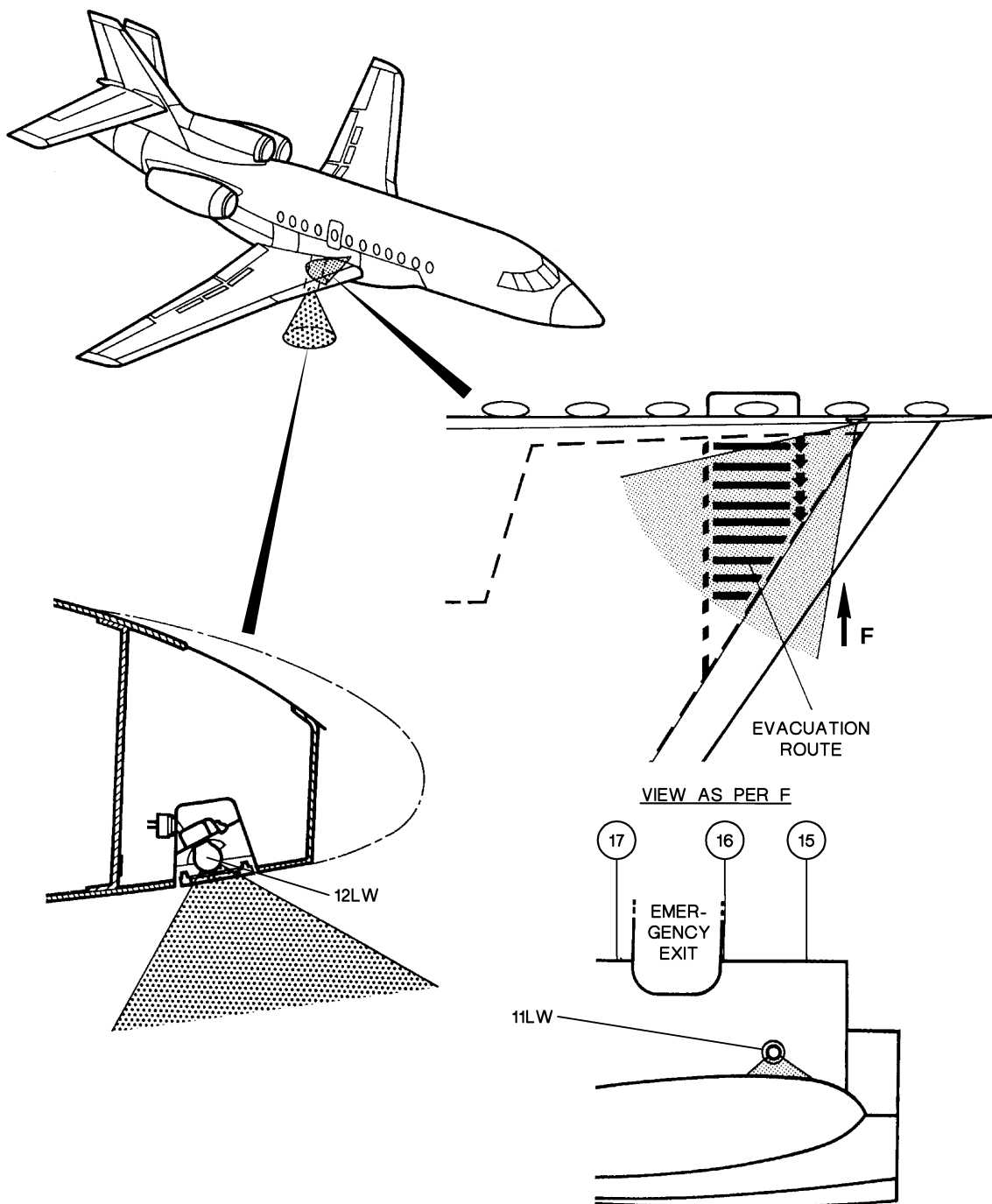


Figure 3: LOCATION OF THE EMERGENCY LIGHTING (EXTERIOR SECTION)

FALCON 900EX AIRCRAFT MAINTENANCE MANUAL

TASK 33-50-33-610-801 SERVICING OF THE EMERGENCY POWER SUPPLIES

1. OVERVIEW OF THE JOB

Operation codes:

- 33-50-33-610-801-01 EPS 1 (**L3LW**)
- 33-50-33-610-801-02 EPS 2 (**R3LW**)
- 33-50-33-610-801-03 EPS 3 (**4LW**)

This procedure is to be performed to check the "PAGE" emergency lighting EPS.

2. LOGISTICS

A. References

Reference	Designation
• 33-50-33-900-801	REMOVAL / INSTALLATION OF THE EMERGENCY POWER SUPPLIES
• 33-50-37-900-801	REMOVAL / INSTALLATION OF THE EPS BATTERY PACKS (PAGE)

B. Tools and Ground Support Equipment

Reference	Designation	Quantity
• F7XC202000008	TOOL BOX	

C. Energy

- ELECTRICAL

D. Miscellaneous

- BATTERY CHARGER (28 ± 0.5 V DC CONSTANT VOLTAGE WITH A CURRENT LIMIT OF 2 A)
- SWITCH (SEE NOTE) (QTY : 2)
- LOAD CIRCUIT (SEE NOTE)

NOTE: The load circuit consists of several 4.5-V (minimum) parallel-connected lamps and a switch (S1).
The total power of the lamps is comprised between 25 and 30 W.
The overall resistance of the circuit must be equal to 0.75 Ω to enable a battery supply of 6 ± 0.3 A.
Refer to **fig. 1**

3. PRELIMINARY STEPS

Refer to **fig. 1**

- A. Remove the "PAGE" emergency lighting EPS from the aircraft (Refer to **TASK 33-50-33-900-801**, para. "Removal").
- B. On the test setup, set the switches as follows:
 - S1 to "OFF",
 - S2 to "DISCHARGE".
- C. Connect the emergency lighting EPS to the test setup.

Effectivity: A/C WITH PAGE NICKEL-CADMIUM BATTERY

Rev. Date: MAR 09/2012

33-50-33-610-801

page 1 / 4

FALCON 900EX AIRCRAFT MAINTENANCE MANUAL

4. DISCHARGING

Refer to **fig. 1**

A. Set the switches as follows:

- S1 to "ARM",
- S2 to "DISCHARGE".

WARNING: DURING THIS TEST, COMPONENTS IN THE EPS UNIT BECOME HOT: THE EPS UNIT CASE WILL BE WARM TO THE TOUCH.

B. Discharge the EPS unit until the lamps extinguish.

C. Set switch S1 to "OFF".

D. Allow the EPS unit case to cool down.

5. SERVICING

Refer to **fig. 1**

A. Set switch S2 to "CHARGE".

B. Charge the EPS unit for 16 hours.

NOTE: If the battery was removed from storage, increase this time to 24 hours.

C. Set the switches as follows:

- S1 to "ARM",
- S2 to "DISCHARGE".

WARNING: DURING THIS TEST, COMPONENTS IN THE EPS UNIT BECOME HOT: THE EPS UNIT CASE WILL BE WARM TO THE TOUCH.

D. After 20 minutes, check that the lamps are still illuminated.

E. Continue to discharge the EPS unit until the lamps extinguish.

F. Set switch S1 to "OFF".

G. Allow the EPS unit case to cool down.

H. Set switch S2 to "CHARGE".

I. Charge the EPS unit for 30 minutes.

J. Set the switches as follows:

- S1 to "ARM",
- S2 to "DISCHARGE".

K. Check that the lamps remain illuminated for 10 minutes.

Effectivity: A/C WITH PAGE NICKEL-CADMIUM BATTERY

Rev. Date: MAR 09/2012

33-50-33-610-801

page 2 / 4

FALCON 900EX AIRCRAFT MAINTENANCE MANUAL

NOTE: If the battery test fails, replace the battery pack (Refer to [TASK 33-50-37-900-801](#)).

- L. Discharge the EPS unit until the lamps extinguish.
- M. Set switch S1 to "OFF".
- N. Allow the EPS unit case to cool down.
- O. Set the switches as follows:
 - S1 to "ARM",
 - S2 to "CHARGE".Charge the EPS unit for 16 hours.
- P. Set the switches as follows:
 - S1 to "OFF",
 - S2 to "DISCHARGE".
- Q. Disconnect the emergency lighting EPS from the test setup.
- R. Allow the EPS unit case to cool down.

6. FINAL STEPS

- A. Install the emergency lighting EPS on the aircraft (Refer to [TASK 33-50-33-900-801](#), para. "Installation").
- B. Perform a test of the emergency lighting EPS (Refer to [TASK 33-50-33-900-801](#), para. "Test after Installation").

FALCON 900EX AIRCRAFT MAINTENANCE MANUAL

EMERGENCY LIGHTING EPS SERVICEABILITY

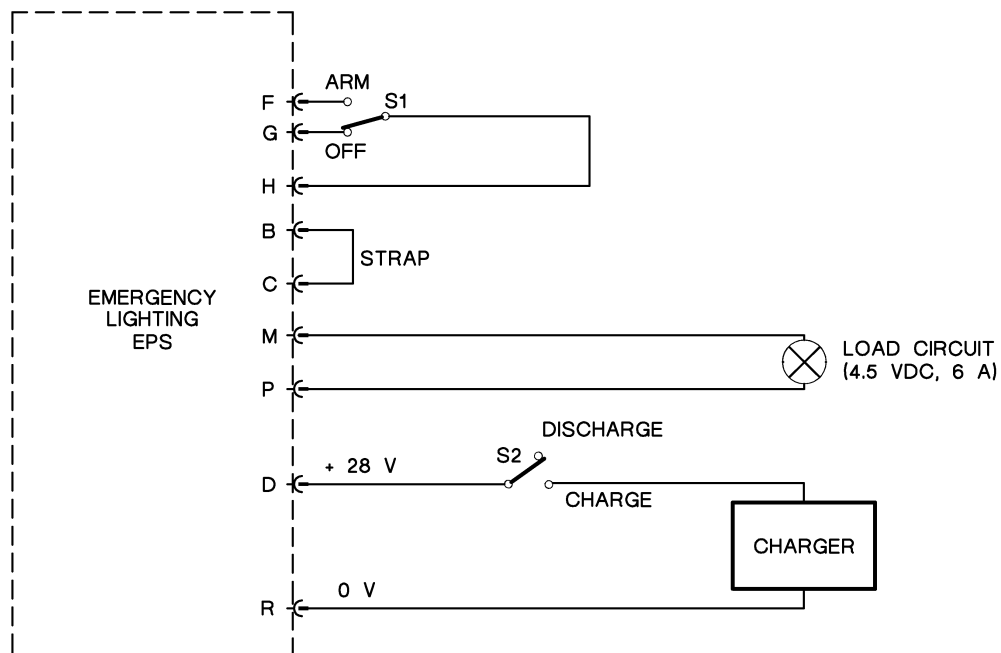


Figure 1: TEST SETUP - CONNECTIONS

Effectivity: A/C WITH PAGE NICKEL-CADMIUM BATTERY

Rev. Date: MAR 09/2012

33-50-33-610-801

page 4 / 4

FALCON 900EX AIRCRAFT MAINTENANCE MANUAL

TASK 33-50-37-960-802 DISCARD OF THE EPS BATTERY PACKS

1. OVERVIEW OF THE JOB

Operation codes:

- 33-50-37-960-802-01 EPS 1 (**L3LW**) battery pack
- 33-50-37-960-802-02 EPS 2 (**R3LW**) battery pack
- 33-50-37-960-802-03 EPS 3 (**4LW**) battery pack

For Removal/Installation of the EPS battery packs, refer to the AMM (Refer to **TASK 33-50-37-900-801**).
Discard the used battery pack, and dispose of it per the regulations relating to Nickel-Cadmium batteries.