

Project No: **BDHRN002**Job Card No **0013**

Notif.No.: 10049237

Activity: **1042**

Rev No: 20000622

Model.: F900EX

Sheet 1 of 1

A/C Regn: **D-AHRN**

Serial No.: 096

Type: F900EX

Starting Phase: Remove

Starting Work Centre: FALCON A/C TEAM

Job Description: **OH LH Pilot Oxygen Mask (I502wh)**

ETOPS A/C: No

RVSM A/C: No

Warranty: -

ATA: 35

| Work Center | |
|-------------|--|
| FALCON A/C | |
| | |
| | |
| | |
| | |

Zone: 200**Access Required for this task:**

PAX

Corrective Action

| | | | | | | |
|------|---|------|-----------|------|--|---|
| 0001 | Task carried out in accordance with the attached Customer Card that quotes the Operator code detailed below. | | | | | Order: 80069314 Operation: 0010 Phase: Remove - scheduling activity Work Center: FALCON A/C TEAM |
| | Accomplished | | Inspected | | | |
| | Pers. No. | Date | Pers. No. | Date | | |
| | Stamp | | Stamp | | | |

Completed & Confirmed on SAP IAW MOE 2.13.

Defect Card Raised

Components Removed/Installed

| | Part Number | Part Name | S/N | Location | Comm. Off/On |
|-----|-------------|-----------|-----|----------|--------------|
| OFF | | | | | |
| ON | | | | | |
| OFF | | | | | |
| ON | | | | | |
| OFF | | | | | |
| ON | | | | | |
| OFF | | | | | |
| ON | | | | | |

Occurance Report Raised? YES ☐

Operations Above & Notifications Completed IAW MOE 2.13.

OEM Code: 35-10-05-350-801-01

Operator Code: 35-10-05-350-801-01

Form No: JA-SAP-MTX-002

Printed by: ADAMOVIC G



Printed: 03.09.2012

13:34:17

Print No: 1

Operator: **HERON AVIATION** Work Card No.: **35.040**
Serial No.: **096** Model: **FALCON 900EX**
Reg No.: **D-AHRN** Workorder No.: _____

| | Date | A/C HRS | AFL | APH | | | |
|--------------|--------------------|---------|-----|-----|--|--|--|
| Due At | 14-DEC-2012 | | | | | | |
| Accomplished | | | | | | | |

TECHNICIAN SIGNATURE: _____ KIND OF CERTIFICATE & NO.: _____

INSPECTED BY: _____ KIND OF CERTIFICATE & NO.: _____

35-10-05-900-801-01 PILOT OXYGEN MASK AMM 35-10-05-900-801

REASON REMOVED: (CHECK ONE) ☐ TIME EXPIRED ☐ FAILURE ☐ WORN ☐ LOANER ☐ SCHEDULING CONV
☐ MOD/UPGRADE ☐ SERVICE ☐ ENGINE CHANGE ☐ TIRE CHANGE ☐ SWAP/TRBLE SHOOT ☐ DAMAGED ☐ UNKNOWN

If removed P/N & S/N information is incorrect please provide details below.

| | | | | | | | |
|---------------|------------|---------------|------|------------|------|---------------|-------|
| REMOVED P/N | MF10-02-05 | | S/N | 120007 | | LABOR-HRS | |
| INSTALLED P/N | | | S/N | | | PART COST\$ | |
| INSTALLED TSN | MOS | INSTALLED TSO | MOS | TIME SINCE | MOS | WARRANTY TIME | MOS |
| | HRS | | HRS | REPAIR | HRS | REMAINING | HRS |
| | LDGS | | LDGS | | LDGS | | LDGS |
| | | | | | | TECH: | INSP: |

REMARKS : _____

Note: INITIAL THE SERVICE TASKS BELOW WHICH WERE ACCOMPLISHED DURING CHANGE. IF TASKS WERE NOT ACCOMPLISHED, RECORD TIME ACCRUED SINCE TASK WAS LAST ACCOMPLISHED OR CHECK CONTINUE TIME (CT).

| TECH | INSP | LABOR-HRS HRS.MINS | TIME ACCRUED | CONTINUE TIME |
|------|------|-----------------------|-----------------|------------------|
|------|------|-----------------------|-----------------|------------------|

>35-10-05-350-801-01 RESTORATION PILOT OXYGEN MASK (OVERHAUL)

REMARKS : _____

GENERIC NO REF,AMM
35-10-05-350-801

35-10-05-710-801-01 OPERATIONAL TEST PILOT OXYGEN MASK

REMARKS : _____

AMM 35-10-05-710-801

Operator: **HERON AVIATION**

Work Card No.: **35.040**

Serial No.: **096**

Model: **FALCON 900EX**

Reg No.: **D-AHRN**

Workorder No.: _____

ACCESS PANEL SUMMARIES

241AZ INTERNAL DOORS DOOR

35-10-05-900-801-01 PILOT OXYGEN MASK

35-10-05-710-801-01 OPERATIONAL TEST PILOT OXYGEN MASK

AREA SUMMARIES

F3 COCKPIT

35-10-05-900-801-01 PILOT OXYGEN MASK

35-10-05-350-801-01 RESTORATION PILOT OXYGEN MASK (OVERHAUL)

35-10-05-710-801-01 OPERATIONAL TEST PILOT OXYGEN MASK

SOURCE SUMMARIES

956 MPD 05-20-35 PAGE NO.:PAGE 1/3 REF: 35-10 CREW OXYGEN SYSTEM DATE: JUN 10/2011 1

35-10-05-350-801-01 RESTORATION PILOT OXYGEN MASK (OVERHAUL)

35-10-05-710-801-01 OPERATIONAL TEST PILOT OXYGEN MASK

FALCON 900EX AIRCRAFT MAINTENANCE MANUAL

TASK 35-10-05-900-801

REMOVAL / INSTALLATION OF THE CREW OXYGEN MASKS

WARNING: COMPLY WITH THE SAFETY MEASURES APPLYING TO THE TYPE OF OPERATIONS TO BE PERFORMED ON THE OXYGEN SYSTEM:

- HANDS, CLOTHES AND TOOLS MUST IMPERATIVELY BE FREE OF GREASE,
- VENTILATE THE COCKPIT AND PASSENGER CABIN (PASSENGER DOOR OPEN),
- SMOKING IS PROHIBITED,
- CUT OFF ALL AIRCRAFT POWER SUPPLIES,
- REFER TO THE PROCEDURE PROVIDING GENERAL INSTRUCTIONS FOR OXYGEN SYSTEM MAINTENANCE (REFER TO [TASK 35-00-00-910-801](#)),
- REPLACEMENT OF OXYGEN SYSTEM COMPONENTS WITH PASSENGERS ON BOARD IS PROHIBITED.

1. OVERVIEW OF THE JOB

Operation codes:

- 35-10-05-900-801-01 LH pilot oxygen mask ([L502WH](#))
- 35-10-05-900-801-02 RH pilot oxygen mask ([R502WH](#))
- 35-10-05-900-801-03 third crew member oxygen mask ([524WH](#))

This procedure describes the removal, installation and stowage of the crew oxygen masks.

NOTE: On A/C with a third crew member oxygen mask (optional), the procedure for the removal/installation of the third crew member oxygen mask ([524WH](#)) is the same as for the removal/installation of the pilot oxygen mask ([L502WH](#)) and copilot oxygen mask ([R502WH](#)).

2. LOGISTICS

A. References

| Reference | Designation |
|------------------------------------|---|
| • 35-00-00-360-801 | LOCALIZATION AND REPAIR OF LEAKS ON THE OXYGEN SYSTEM |
| • 35-00-00-910-801 | OXYGEN SYSTEM MAINTENANCE AND SAFETY PRECAUTIONS |
| • 35-10-05-710-801 | OPERATIONAL TEST OF THE CREW OXYGEN MASKS |

B. Ingredients and Consumable Products

| Designation | Additional designation |
|---------------------------------|------------------------|
| • DISINFECTANT | OXYGEN |
| • LEAK DETECTOR | |

C. Access

| Reference | Designation |
|-------------------------|-----------------------------|
| • 241AZ | OXYGEN CYLINDER ACCESS DOOR |
| • PAX | PASSENGER DOOR |

D. Miscellaneous

FALCON 900EX AIRCRAFT MAINTENANCE MANUAL

- LINT-FREE CLOTH

3. PRELIMINARY STEPS

Refer to **fig. 1**

- Open door (**241AZ**) giving access to the pressure reducing valve of oxygen cylinder (**500WH**).
- Close the pressure reducing valve of oxygen cylinder (**500WH**) ("OFF" indication).

4. REMOVAL OF CREW OXYGEN MASKS

Refer to **fig. 1**

- Holding the mask tightly by the red tabs (3) of the harness inflation control, remove pilot/copilot oxygen mask (**L502WH**)/(**L502WH**) from pilot/copilot oxygen mask box (**L504WH**)/(**R504WH**).
- Disconnect radio connector (1) from pilot/copilot mask mike jack (**L3RL**)/(**R3RL**).
- Disconnect oxygen mask coupling (2) from pilot/copilot oxygen mask jack (**L505WH**)/(**R505WH**).
- Install captive cap (7) on pilot/copilot oxygen mask jack (**L505WH**)/(**R505WH**).
- Remove pilot/copilot oxygen mask (**L502WH**)/(**L502WH**).

5. INSTALLATION OF CREW OXYGEN MASKS

Refer to **fig. 1**

- Clean pilot/copilot oxygen mask box (**L504WH**)/(**R504WH**) with **disinfectant**.
- Remove captive cap (7) from pilot/copilot oxygen mask jack (**L505WH**)/(**R505WH**).
- Connect oxygen mask coupling (2) to pilot/copilot oxygen mask jack (**L505WH**)/(**R505WH**).
- Open the pressure reducing valve of oxygen cylinder (**500WH**) ("ON" indication).
- Using **leak detector**, check for leaks at the oxygen mask coupling (2) (Refer to **TASK 35-00-00-360-801**).
- Carefully wipe off the **leak detector**.

NOTE: The **leak detector** must be wiped off immediately after completion of the leak test.

- Connect radio connector (1) to radio jack (**L3RL**)/(**R3RL**).

6. TEST OF CREW OXYGEN MASKS

- Perform an operational test of pilot/copilot oxygen mask (**L502WH**)/(**L502WH**) (Refer to **TASK 35-10-05-710-801**).

FALCON 900EX AIRCRAFT MAINTENANCE MANUAL

7. STOWAGE OF CREW OXYGEN MASKS

Refer to **fig. 1** and **fig. 2**

- A. For A/C with mask equipped with comfort function, make sure that the toggle switch (7) is set to "NORM".
- B. Coil the oxygen hose and the radio cord at the bottom of pilot/copilot oxygen mask box (**L504WH**)/(**R504WH**) (**fig. 2**, detail A).
- C. Put the harness into pilot/copilot oxygen mask (**L502WH**)/(**R502WH**) (**fig. 2**, detail B).

NOTE: The harness must not protrude from the edge of the mask (**fig. 2**, detail C).

- D. Take the mask by the red tabs (3) of the harness inflation control, without pressing them, and put the mask into the pilot/copilot oxygen mask box (**L504WH**)/(**R504WH**), with the harness sides symmetrically arranged with respect to the mask and ahead of the mask face section (**fig. 2**, detail D).
- E. Press pilot/copilot oxygen mask (**L502WH**)/(**L502WH**) against stop (9) in pilot/copilot oxygen mask box (**L504WH**)/(**R504WH**), with the mask face section downwards and the opening facing aft (**fig. 2**, detail D).

NOTE: Red tabs (3) must protrude from the pilot/copilot oxygen mask box (**L504WH**)/(**R504WH**).

- F. Close the LH door (**fig. 2**, detail E).

NOTE: Spigot (8) located on the edge of the LH door retains pilot/copilot oxygen mask (**L502WH**)/(**L502WH**).

- G. Insert spigot (8) into hole (5) in red tab (3).
- H. Close the RH door (**fig. 2**, detail F).
- I. Position the oxygen hose and the radio cord in the cutout provided in the doors of the pilot/copilot oxygen mask box (**L504WH**)/(**R504WH**) (the hose curve must be 5 to 6 cm (2 to 2.4 in.) in diameter) (**fig. 2**, detail F).
- J. Make sure that the "N-100%" control pushbutton (4) is set to "N" (**fig. 2**, detail F).

8. FINAL STEPS

Refer to **fig. 1**

- A. Close access door (**241AZ**).

FALCON 900EX AIRCRAFT MAINTENANCE MANUAL

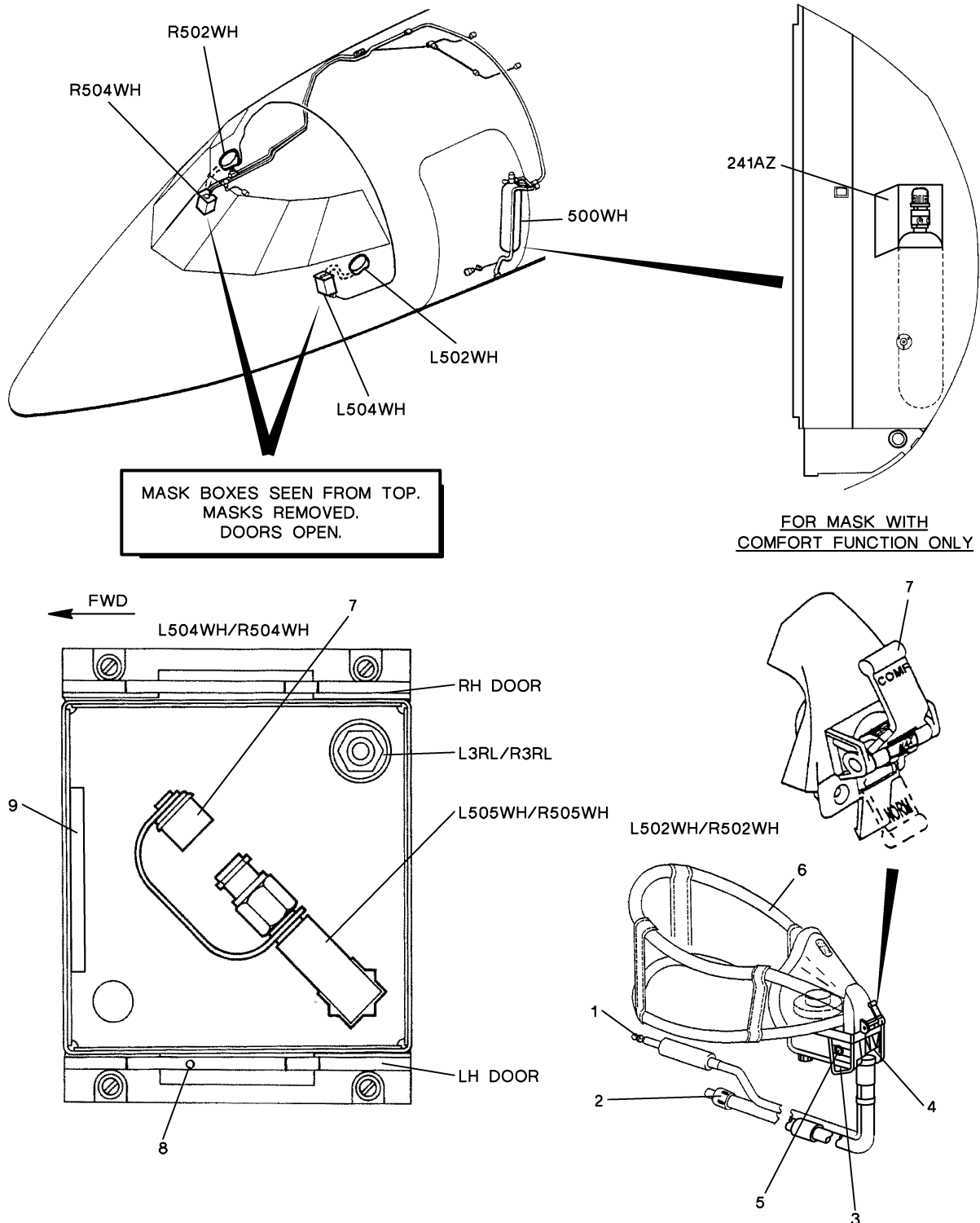
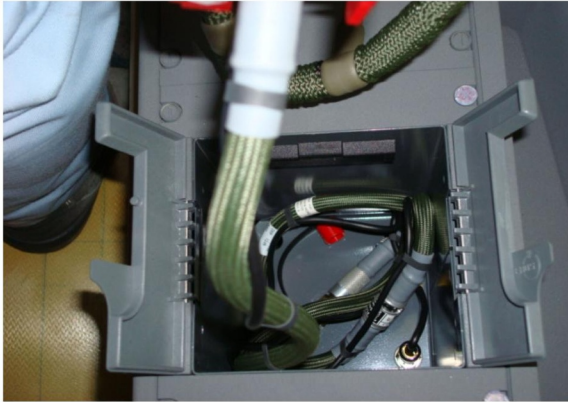


Figure 1: Location of Equipment

FALCON 900EX AIRCRAFT MAINTENANCE MANUAL

DETAIL A



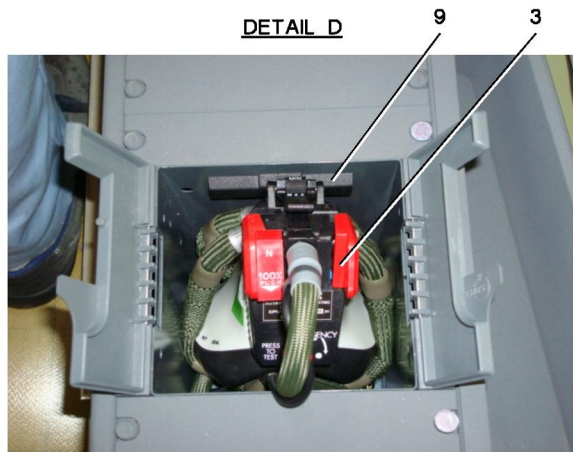
DETAIL B



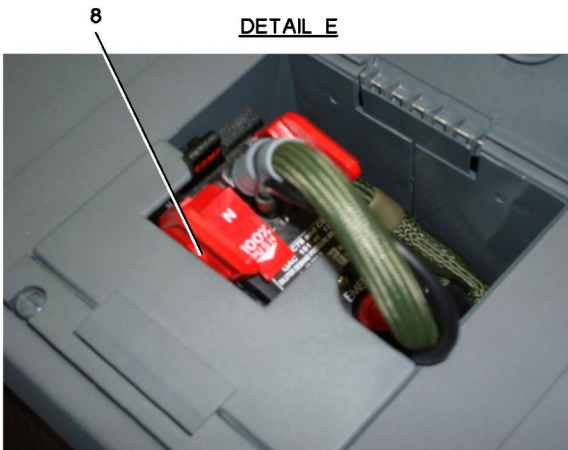
DETAIL C



DETAIL D



DETAIL E



DETAIL F

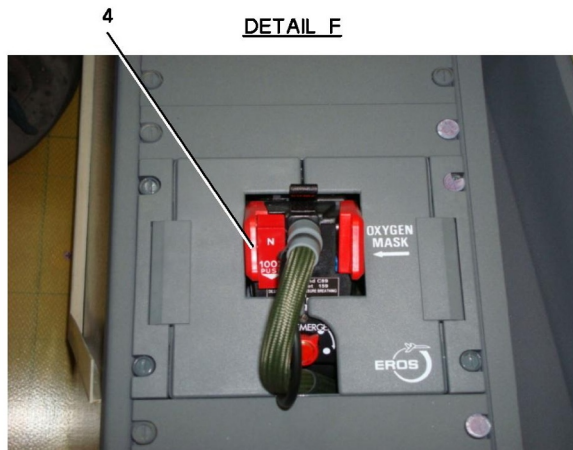


Figure 2: Stowage of the Crew Oxygen Masks

FALCON 900EX AIRCRAFT MAINTENANCE MANUAL

TASK 35-10-05-350-801 RESTORATION OF THE CREW OXYGEN MASKS (OVERHAUL)

1. OVERVIEW OF THE JOB

Operation codes:

- 35-10-05-350-801-01 LH pilot oxygen mask (**L502WH**)
- 35-10-05-350-801-02 RH pilot oxygen mask (**R502WH**)
- 35-10-05-350-801-03 third crew member oxygen mask (**524WH**)

The task consists in an overhaul of the regulator of the crew oxygen masks.

For Removal/Installation of the oxygen masks, refer to the AMM (Refer to **TASK 35-10-05-900-801**).

2. LOGISTICS

A. References

Reference

- **35-10-05-900-801**

Designation

REMOVAL / INSTALLATION OF THE CREW OXYGEN MASKS

FALCON 900EX AIRCRAFT MAINTENANCE MANUAL

TASK 35-10-05-710-801

OPERATIONAL TEST OF THE CREW OXYGEN MASKS

WARNING: COMPLY WITH THE SAFETY MEASURES APPLYING TO THE TYPE OF OPERATIONS TO BE PERFORMED ON THE OXYGEN SYSTEM:

- HANDS, CLOTHES AND TOOLS MUST BE IMPERATIVELY FREE OF GREASE.
- VENTILATE THE COCKPIT AND PASSENGER CABIN (PASSENGER DOOR OPEN).
- REFER TO THE PROCEDURE PROVIDING SPECIFIC INSTRUCTIONS FOR OXYGEN SYSTEM MAINTENANCE (REFER TO [TASK 35-00-00-910-801](#)).
- SMOKING IS PROHIBITED.
- CUT OFF ALL A/C POWER SUPPLIES.
- REPLACEMENT OF OXYGEN SYSTEM COMPONENTS WITH PASSENGERS ON BOARD IS PROHIBITED.

1. OVERVIEW OF THE JOB

Operation codes:

- 35-10-05-710-801-01 LH pilot oxygen mask ([L502WH](#))
- 35-10-05-710-801-02 RH pilot oxygen mask ([R502WH](#))
- 35-10-05-710-801-03 third crew member oxygen mask ([524WH](#))

This procedure describes the operational test of pilot/copilot oxygen masks ([L502WH](#))/([R502WH](#)). The following mask components are tested:

- the controller,
- the pneumatic harness,
- the microphone,
- the comfort function and the flowmeter indicator, as applicable.

This procedure is also applicable to the third crew member oxygen mask ([524WH](#)) when it is of the same type as the LH / RH pilot masks (option).

This procedure is not applicable if the third crew member mask is a passenger mask. In this case, the third crew member mask is tested at the same time as the passenger masks (Refer to [TASK 35-20-00-720-801](#)).

This procedure also includes a mask check consisting of a cleaning and a visual inspection of the pilot/copilot oxygen masks for correct condition.

2. LOGISTICS

A. References

Reference

- [24-00-00-860-801](#)
- [35-00-00-910-801](#)
- [35-20-00-720-801](#)
- [35-10-05-100-801](#)
- [35-10-05-900-801](#)

Designation

ENERGIZATION / DE-ENERGIZATION OF THE AIRCRAFT
OXYGEN SYSTEM MAINTENANCE AND SAFETY PRECAUTIONS
FUNCTIONAL TEST OF THE PASSENGER OXYGEN SYSTEM
CLEANING OF THE CREW OXYGEN MASKS
REMOVAL / INSTALLATION OF THE CREW OXYGEN MASKS

B. Energy

- ELECTRICAL

FALCON 900EX AIRCRAFT MAINTENANCE MANUAL

C. Access

Reference

- **241AZ**
- **PAX**

Designation

OXYGEN CYLINDER ACCESS DOOR
PASSENGER DOOR

3. OPERATIONAL TEST

Refer to **fig. 1** and **fig. 2**

- A. Open access door (**241AZ**).
- B. Open pressure reducing valve (1) of oxygen cylinder (**500WH**).
- C. In the cockpit, on pilot/copilot oxygen mask (**L502WH**)/(**R502WH**), pinch harness inflating controls (red levers) (7).
- D. Remove pilot/copilot oxygen mask (**L502WH**)/(**R502WH**) from pilot/copilot oxygen mask box (**L504WH**)/(**R504WH**).
- E. Check that harness (9) inflates correctly.
- F. Maintain harness (9) inflated, then put pilot/copilot oxygen mask (**L502WH**)/(**R502WH**) over your face.
- G. Release harness inflating controls (red levers) (7): harness (9) deflates until it is tight around your head.
- H. Check that you can breathe easily ("N - 100%" control pushbutton (5) set to "N" (dilution mode), then to "100%" (pure oxygen mode)): the mask supplies oxygen as the user breathes in.
- I. Set manual overpressure into operation by turning "PRESS TO TEST" knob (8) to "EMERGENCY" (counterclockwise direction).
- J. If pilot/copilot oxygen mask (**L502WH**)/(**R502WH**) is provided with the comfort function, perform the following checks:
 - (1) Press "COMF" toggle switch (2) located on the regulator of pilot/copilot oxygen mask (**L502WH**)/(**R502WH**) and pinch harness inflating controls (red levers) (7).
 - (2) Check that harness (9) slowly inflates.
 - (3) Release harness inflating controls (red levers) (7) and make sure that the pressure in harness (9) stabilizes.
 - (4) Set "COMF" toggle switch (2) back to "NORM" and check that harness (9) immediately deflates.
- K. If pilot/copilot oxygen mask (**L502WH**)/(**R502WH**) is equipped with a flowmeter indicator on the oxygen hose, check for correct operation of flow indicator (6) as follows:
 - black indicator not visible: presence of an oxygen flow,
 - black indicator visible: absence of oxygen flow.
- L. Pull down slide (3) located on the mask until the red stripes are fully visible.