

Project No: **BDHRN002**Job Card No **0014**

Notif.No.: 10049238

Activity: **1043**

Rev No: 20000622

Model.: F900EX

Sheet 1 of 1

A/C Regn: **D-AHRN**

Serial No.: 096

Type: F900EX

Starting Phase: Remove

Starting Work Centre: FALCON A/C TEAM

Job Description: **OH RH Pilot Oxygen Mask (r502wh)**

ETOPS A/C: No

RVSM A/C: No

Warranty: -

ATA: 35

Work Center	
FALCON A/C	

Zone: 200**Access Required for this task:**

PAX

Corrective Action

0001	Task carried out in accordance with the attached Customer Card that quotes the Operator code detailed below.					 Order: 80069315 Operation: 0010 Phase: Remove - scheduling activity Work Center: FALCON A/C TEAM
	Accomplished		Inspected			
	Pers. No.	Date	Pers. No.	Date		
	Stamp		Stamp			

Completed & Confirmed on SAP IAW MOE 2.13.

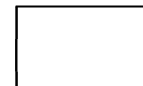
Defect Card Raised

Components Removed/Installed

	Part Number	Part Name	S/N	Location	Comm. Off/On
OFF					
ON					
OFF					
ON					
OFF					
ON					
OFF					
ON					

Occurance Report Raised? YES ☐

Operations Above & Notifications Completed IAW MOE 2.13.



OEM Code: 35-10-05-350-801-02

Operator Code: 35-10-05-350-801-02

Form No: JA-SAP-MTX-002

Printed by: ADAMOVIC G



Printed: 03.09.2012

13:34:17

Print No: 1

Operator: HERON AVIATION		Work Card No.: 35.050
Serial No.: 096	Model: FALCON 900EX	
Reg No.: D-AHRN	Workorder No.: _____	

	Date	A/C HRS	AFL	APH			
Due At	14-DEC-2012						
Accomplished							

TECHNICIAN SIGNATURE: _____ KIND OF CERTIFICATE & NO.: _____

INSPECTED BY: _____ KIND OF CERTIFICATE & NO.: _____

35-10-05-900-801-02	COPILOT OXYGEN MASK	AMM 35-10-05-900-801
---------------------	---------------------	----------------------

REASON REMOVED: (CHECK ONE)	<input type="checkbox"/> TIME EXPIRED	<input type="checkbox"/> FAILURE	<input type="checkbox"/> WORN	<input type="checkbox"/> LOANER	<input type="checkbox"/> SCHEDULING CONV	<input type="checkbox"/> DAMAGED	<input type="checkbox"/> UNKNOWN
	<input type="checkbox"/> MOD/UPGRADE	<input type="checkbox"/> SERVICE	<input type="checkbox"/> ENGINE CHANGE	<input type="checkbox"/> TIRE CHANGE	<input type="checkbox"/> SWAP/TRBLE SHOOT		
<i>If removed P/N & S/N information is incorrect please provide details below.</i>							
REMOVED P/N	MF10-02-05		S/N	120008		LABOR-HRS	_____
INSTALLED P/N			S/N			PART COST\$	_____
INSTALLED TSN	MOS	INSTALLED TSO	MOS	TIME SINCE REPAIR	MOS	WARRANTY TIME REMAINING	MOS
	HRS		HRS		HRS		HRS
	LDGS		LDGS		LDGS		LDGS
						TECH:	_____
						INSP:	_____

REMARKS : _____

Note: INITIAL THE SERVICE TASKS BELOW WHICH WERE ACCOMPLISHED DURING CHANGE. IF TASKS WERE NOT ACCOMPLISHED, RECORD TIME ACCRUED SINCE TASK WAS LAST ACCOMPLISHED OR CHECK CONTINUE TIME (CT).

TECH	INSP	LABOR-HRS HRS.MINS	TIME ACCRUED	CONTINUE TIME
------	------	-----------------------	-----------------	------------------

>35-10-05-350-801- 02 RESTORATION COPILOT OXYGEN MASK (OVERHAUL)

REMARKS : _____

GENERIC NO REF,AMM
35-10-05-350-801

35-10-05-710-801-02 OPERATIONAL TEST COPILOT OXYGEN MASK

REMARKS : _____

AMM 35-10-05-710-801

Operator: **HERON AVIATION**

Work Card No.: **35.050**

Serial No.: **096**

Model: **FALCON 900EX**

Reg No.: **D-AHRN**

Workorder No.: _____

ACCESS PANEL SUMMARIES

241AZ INTERNAL DOORS DOOR

35-10-05-900-801-02 COPILOT OXYGEN MASK

35-10-05-710-801-02 OPERATIONAL TEST COPILOT OXYGEN MASK

AREA SUMMARIES

F3 COCKPIT

35-10-05-900-801-02 COPILOT OXYGEN MASK

35-10-05-350-801-02 RESTORATION COPILOT OXYGEN MASK (OVERHAUL)

35-10-05-710-801-02 OPERATIONAL TEST COPILOT OXYGEN MASK

SOURCE SUMMARIES

956 MPD 05-20-35 PAGE NO.:PAGE 1/3 REF: 35-10 CREW OXYGEN SYSTEM DATE: JUN 10/2011 1

35-10-05-350-801-02 RESTORATION COPILOT OXYGEN MASK (OVERHAUL)

35-10-05-710-801-02 OPERATIONAL TEST COPILOT OXYGEN MASK

FALCON 900EX AIRCRAFT MAINTENANCE MANUAL

TASK 35-10-05-900-801

REMOVAL / INSTALLATION OF THE CREW OXYGEN MASKS

WARNING: COMPLY WITH THE SAFETY MEASURES APPLYING TO THE TYPE OF OPERATIONS TO BE PERFORMED ON THE OXYGEN SYSTEM:

- HANDS, CLOTHES AND TOOLS MUST IMPERATIVELY BE FREE OF GREASE,
- VENTILATE THE COCKPIT AND PASSENGER CABIN (PASSENGER DOOR OPEN),
- SMOKING IS PROHIBITED,
- CUT OFF ALL AIRCRAFT POWER SUPPLIES,
- REFER TO THE PROCEDURE PROVIDING GENERAL INSTRUCTIONS FOR OXYGEN SYSTEM MAINTENANCE (REFER TO [TASK 35-00-00-910-801](#)),
- REPLACEMENT OF OXYGEN SYSTEM COMPONENTS WITH PASSENGERS ON BOARD IS PROHIBITED.

1. OVERVIEW OF THE JOB

Operation codes:

- 35-10-05-900-801-01 LH pilot oxygen mask ([L502WH](#))
- 35-10-05-900-801-02 RH pilot oxygen mask ([R502WH](#))
- 35-10-05-900-801-03 third crew member oxygen mask ([524WH](#))

This procedure describes the removal, installation and stowage of the crew oxygen masks.

NOTE: On A/C with a third crew member oxygen mask (optional), the procedure for the removal/installation of the third crew member oxygen mask ([524WH](#)) is the same as for the removal/installation of the pilot oxygen mask ([L502WH](#)) and copilot oxygen mask ([R502WH](#)).

2. LOGISTICS

A. References

Reference	Designation
• 35-00-00-360-801	LOCALIZATION AND REPAIR OF LEAKS ON THE OXYGEN SYSTEM
• 35-00-00-910-801	OXYGEN SYSTEM MAINTENANCE AND SAFETY PRECAUTIONS
• 35-10-05-710-801	OPERATIONAL TEST OF THE CREW OXYGEN MASKS

B. Ingredients and Consumable Products

Designation	Additional designation
• DISINFECTANT	OXYGEN
• LEAK DETECTOR	

C. Access

Reference	Designation
• 241AZ	OXYGEN CYLINDER ACCESS DOOR
• PAX	PASSENGER DOOR

D. Miscellaneous

FALCON 900EX AIRCRAFT MAINTENANCE MANUAL

- LINT-FREE CLOTH

3. PRELIMINARY STEPS

Refer to **fig. 1**

- Open door (**241AZ**) giving access to the pressure reducing valve of oxygen cylinder (**500WH**).
- Close the pressure reducing valve of oxygen cylinder (**500WH**) ("OFF" indication).

4. REMOVAL OF CREW OXYGEN MASKS

Refer to **fig. 1**

- Holding the mask tightly by the red tabs (3) of the harness inflation control, remove pilot/copilot oxygen mask (**L502WH**)/(**L502WH**) from pilot/copilot oxygen mask box (**L504WH**)/(**R504WH**).
- Disconnect radio connector (1) from pilot/copilot mask mike jack (**L3RL**)/(**R3RL**).
- Disconnect oxygen mask coupling (2) from pilot/copilot oxygen mask jack (**L505WH**)/(**R505WH**).
- Install captive cap (7) on pilot/copilot oxygen mask jack (**L505WH**)/(**R505WH**).
- Remove pilot/copilot oxygen mask (**L502WH**)/(**L502WH**).

5. INSTALLATION OF CREW OXYGEN MASKS

Refer to **fig. 1**

- Clean pilot/copilot oxygen mask box (**L504WH**)/(**R504WH**) with **disinfectant**.
- Remove captive cap (7) from pilot/copilot oxygen mask jack (**L505WH**)/(**R505WH**).
- Connect oxygen mask coupling (2) to pilot/copilot oxygen mask jack (**L505WH**)/(**R505WH**).
- Open the pressure reducing valve of oxygen cylinder (**500WH**) ("ON" indication).
- Using **leak detector**, check for leaks at the oxygen mask coupling (2) (Refer to **TASK 35-00-00-360-801**).
- Carefully wipe off the **leak detector**.

NOTE: The **leak detector** must be wiped off immediately after completion of the leak test.

- Connect radio connector (1) to radio jack (**L3RL**)/(**R3RL**).

6. TEST OF CREW OXYGEN MASKS

- Perform an operational test of pilot/copilot oxygen mask (**L502WH**)/(**L502WH**) (Refer to **TASK 35-10-05-710-801**).

FALCON 900EX AIRCRAFT MAINTENANCE MANUAL

7. STOWAGE OF CREW OXYGEN MASKS

Refer to **fig. 1** and **fig. 2**

- A. For A/C with mask equipped with comfort function, make sure that the toggle switch (7) is set to "NORM".
- B. Coil the oxygen hose and the radio cord at the bottom of pilot/copilot oxygen mask box (**L504WH**)/(**R504WH**) (**fig. 2**, detail A).
- C. Put the harness into pilot/copilot oxygen mask (**L502WH**)/(**R502WH**) (**fig. 2**, detail B).

NOTE: The harness must not protrude from the edge of the mask (**fig. 2**, detail C).

- D. Take the mask by the red tabs (3) of the harness inflation control, without pressing them, and put the mask into the pilot/copilot oxygen mask box (**L504WH**)/(**R504WH**), with the harness sides symmetrically arranged with respect to the mask and ahead of the mask face section (**fig. 2**, detail D).
- E. Press pilot/copilot oxygen mask (**L502WH**)/(**L502WH**) against stop (9) in pilot/copilot oxygen mask box (**L504WH**)/(**R504WH**), with the mask face section downwards and the opening facing aft (**fig. 2**, detail D).

NOTE: Red tabs (3) must protrude from the pilot/copilot oxygen mask box (**L504WH**)/(**R504WH**).

- F. Close the LH door (**fig. 2**, detail E).

NOTE: Spigot (8) located on the edge of the LH door retains pilot/copilot oxygen mask (**L502WH**)/(**L502WH**).

- G. Insert spigot (8) into hole (5) in red tab (3).
- H. Close the RH door (**fig. 2**, detail F).
- I. Position the oxygen hose and the radio cord in the cutout provided in the doors of the pilot/copilot oxygen mask box (**L504WH**)/(**R504WH**) (the hose curve must be 5 to 6 cm (2 to 2.4 in.) in diameter) (**fig. 2**, detail F).
- J. Make sure that the "N-100%" control pushbutton (4) is set to "N" (**fig. 2**, detail F).

8. FINAL STEPS

Refer to **fig. 1**

- A. Close access door (**241AZ**).

FALCON 900EX AIRCRAFT MAINTENANCE MANUAL

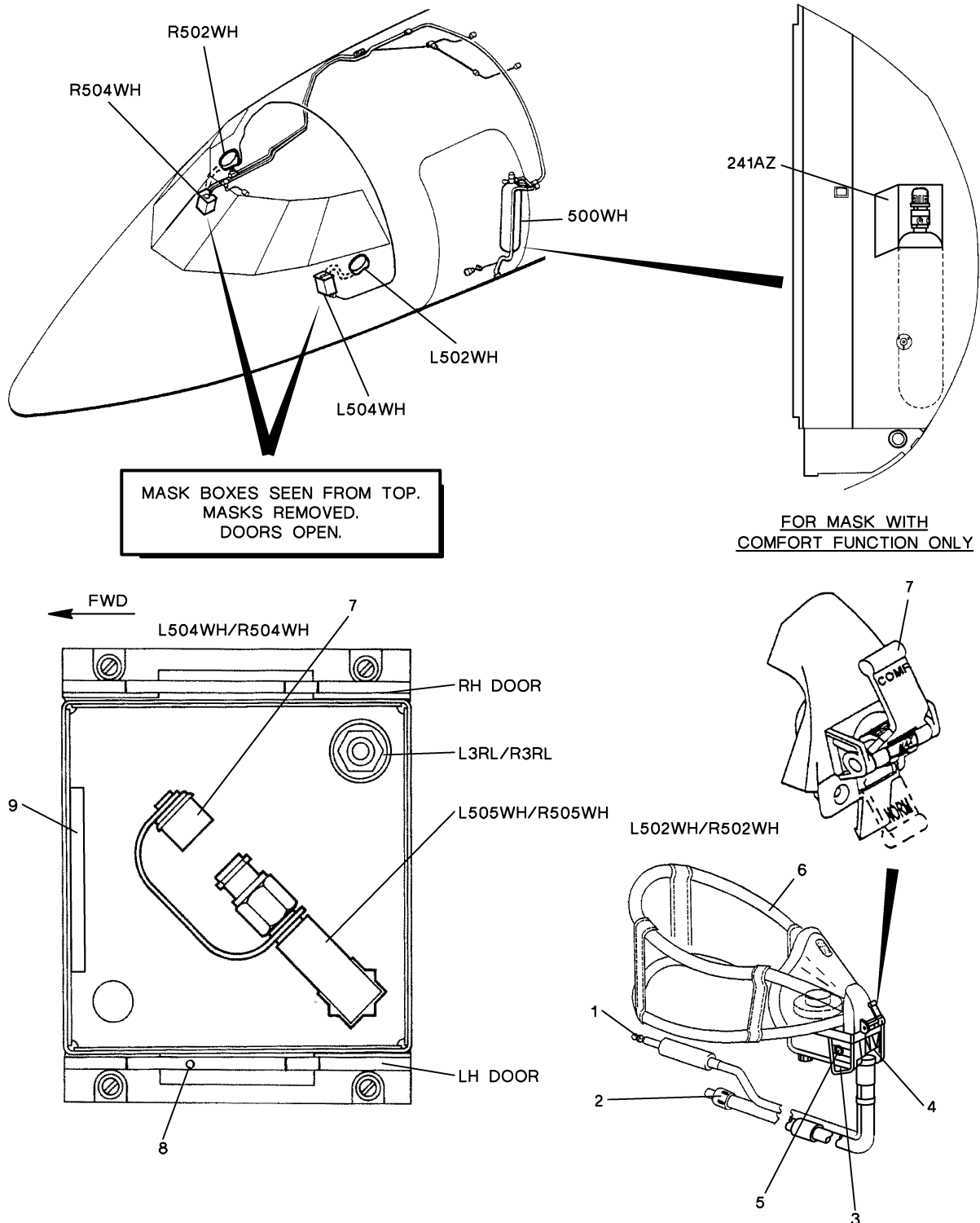
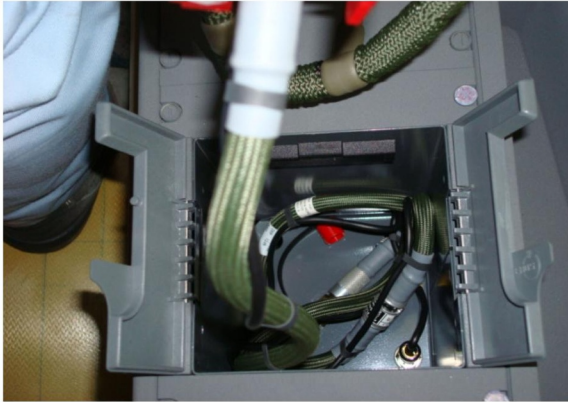


Figure 1: Location of Equipment

FALCON 900EX AIRCRAFT MAINTENANCE MANUAL

DETAIL A



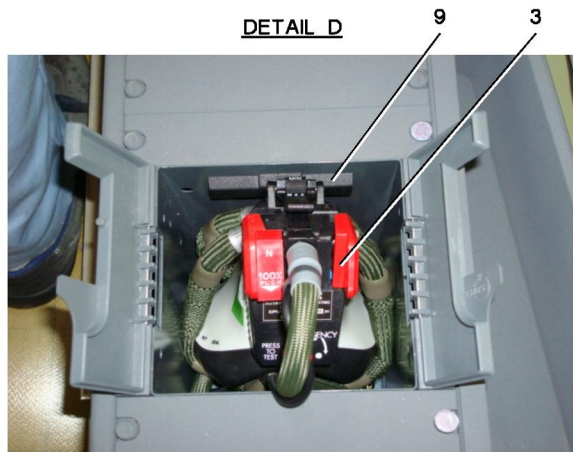
DETAIL B



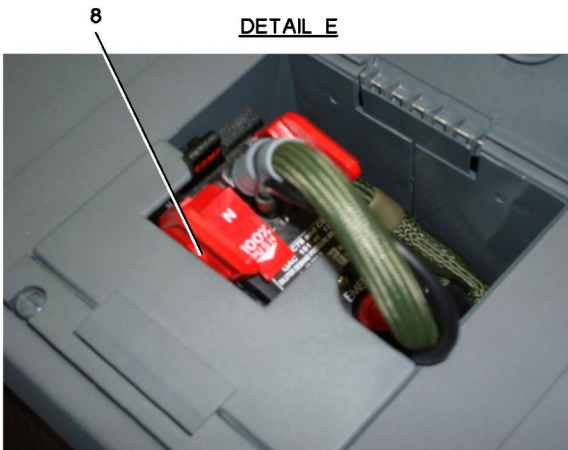
DETAIL C



DETAIL D



DETAIL E



DETAIL F

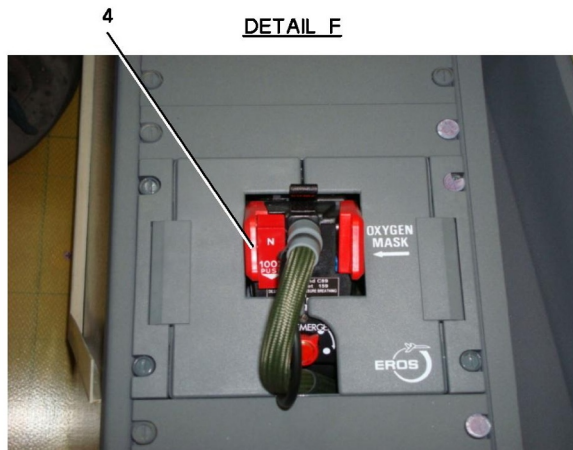


Figure 2: Stowage of the Crew Oxygen Masks

FALCON 900EX AIRCRAFT MAINTENANCE MANUAL

TASK 35-10-05-350-801 RESTORATION OF THE CREW OXYGEN MASKS (OVERHAUL)

1. OVERVIEW OF THE JOB

Operation codes:

- 35-10-05-350-801-01 LH pilot oxygen mask (**L502WH**)
- 35-10-05-350-801-02 RH pilot oxygen mask (**R502WH**)
- 35-10-05-350-801-03 third crew member oxygen mask (**524WH**)

The task consists in an overhaul of the regulator of the crew oxygen masks.

For Removal/Installation of the oxygen masks, refer to the AMM (Refer to **TASK 35-10-05-900-801**).

2. LOGISTICS

A. References

Reference

- **35-10-05-900-801**

Designation

REMOVAL / INSTALLATION OF THE CREW OXYGEN MASKS

FALCON 900EX AIRCRAFT MAINTENANCE MANUAL

TASK 35-10-05-710-801 OPERATIONAL TEST OF THE CREW OXYGEN MASKS

WARNING: COMPLY WITH THE SAFETY MEASURES APPLYING TO THE TYPE OF OPERATIONS TO BE PERFORMED ON THE OXYGEN SYSTEM:

- HANDS, CLOTHES AND TOOLS MUST BE IMPERATIVELY FREE OF GREASE.
- VENTILATE THE COCKPIT AND PASSENGER CABIN (PASSENGER DOOR OPEN).
- REFER TO THE PROCEDURE PROVIDING SPECIFIC INSTRUCTIONS FOR OXYGEN SYSTEM MAINTENANCE (REFER TO [TASK 35-00-00-910-801](#)).
- SMOKING IS PROHIBITED.
- CUT OFF ALL A/C POWER SUPPLIES.
- REPLACEMENT OF OXYGEN SYSTEM COMPONENTS WITH PASSENGERS ON BOARD IS PROHIBITED.

1. OVERVIEW OF THE JOB

Operation codes:

- 35-10-05-710-801-01 LH pilot oxygen mask ([L502WH](#))
- 35-10-05-710-801-02 RH pilot oxygen mask ([R502WH](#))
- 35-10-05-710-801-03 third crew member oxygen mask ([524WH](#))

This procedure describes the operational test of pilot/copilot oxygen masks ([L502WH](#))/([R502WH](#)). The following mask components are tested:

- the controller,
- the pneumatic harness,
- the microphone,
- the comfort function and the flowmeter indicator, as applicable.

This procedure is also applicable to the third crew member oxygen mask ([524WH](#)) when it is of the same type as the LH / RH pilot masks (option).

This procedure is not applicable if the third crew member mask is a passenger mask. In this case, the third crew member mask is tested at the same time as the passenger masks (Refer to [TASK 35-20-00-720-801](#)).

This procedure also includes a mask check consisting of a cleaning and a visual inspection of the pilot/copilot oxygen masks for correct condition.

2. LOGISTICS

A. References

Reference

- [24-00-00-860-801](#)
- [35-00-00-910-801](#)
- [35-20-00-720-801](#)
- [35-10-05-100-801](#)
- [35-10-05-900-801](#)

Designation

ENERGIZATION / DE-ENERGIZATION OF THE AIRCRAFT
OXYGEN SYSTEM MAINTENANCE AND SAFETY PRECAUTIONS
FUNCTIONAL TEST OF THE PASSENGER OXYGEN SYSTEM
CLEANING OF THE CREW OXYGEN MASKS
REMOVAL / INSTALLATION OF THE CREW OXYGEN MASKS

B. Energy

- ELECTRICAL

FALCON 900EX AIRCRAFT MAINTENANCE MANUAL

C. Access

Reference

- **241AZ**
- **PAX**

Designation

OXYGEN CYLINDER ACCESS DOOR
PASSENGER DOOR

3. OPERATIONAL TEST

Refer to **fig. 1** and **fig. 2**

- A. Open access door (**241AZ**).
- B. Open pressure reducing valve (1) of oxygen cylinder (**500WH**).
- C. In the cockpit, on pilot/copilot oxygen mask (**L502WH**)/(**R502WH**), pinch harness inflating controls (red levers) (7).
- D. Remove pilot/copilot oxygen mask (**L502WH**)/(**R502WH**) from pilot/copilot oxygen mask box (**L504WH**)/(**R504WH**).
- E. Check that harness (9) inflates correctly.
- F. Maintain harness (9) inflated, then put pilot/copilot oxygen mask (**L502WH**)/(**R502WH**) over your face.
- G. Release harness inflating controls (red levers) (7): harness (9) deflates until it is tight around your head.
- H. Check that you can breathe easily ("N - 100%" control pushbutton (5) set to "N" (dilution mode), then to "100%" (pure oxygen mode)): the mask supplies oxygen as the user breathes in.
- I. Set manual overpressure into operation by turning "PRESS TO TEST" knob (8) to "EMERGENCY" (counterclockwise direction).
- J. If pilot/copilot oxygen mask (**L502WH**)/(**R502WH**) is provided with the comfort function, perform the following checks:
 - (1) Press "COMF" toggle switch (2) located on the regulator of pilot/copilot oxygen mask (**L502WH**)/(**R502WH**) and pinch harness inflating controls (red levers) (7).
 - (2) Check that harness (9) slowly inflates.
 - (3) Release harness inflating controls (red levers) (7) and make sure that the pressure in harness (9) stabilizes.
 - (4) Set "COMF" toggle switch (2) back to "NORM" and check that harness (9) immediately deflates.
- K. If pilot/copilot oxygen mask (**L502WH**)/(**R502WH**) is equipped with a flowmeter indicator on the oxygen hose, check for correct operation of flow indicator (6) as follows:
 - black indicator not visible: presence of an oxygen flow,
 - black indicator visible: absence of oxygen flow.
- L. Pull down slide (3) located on the mask until the red stripes are fully visible.

FALCON 900EX AIRCRAFT MAINTENANCE MANUAL

- M. Check that overpressure operates via the regulator valve intended to supply pilot/copilot smoke goggles (**L507WH**)/(**R507WH**): pilot/copilot oxygen mask (**L502WH**)/(**R502WH**) delivers a continuous oxygen flow.
- N. Stop manual overpressure by turning back "PRESS TO TEST" control knob (8) (clockwise direction).
- O. Push up slide (3) located on the mask until the red stripes fully disappear.
- P. Set "N - 100%" control pushbutton (5) to "100%".
- Q. Press "PRESS TO TEST" control knob (8) and check for a hissing noise: pilot/copilot oxygen mask (**L502WH**)/(**R502WH**) delivers a continuous oxygen flow.
- R. Close pressure reducing valve (1) of oxygen cylinder (**500WH**).
- S. Close access door (**241AZ**).
- T. Test microphone (4) as follows:
 - (1) Energize the aircraft systems with batteries (refer to the procedure (Refer to **TASK 24-00-00-860-801**), paragraph "Energization from Batteries").
 - (2) On ICS 1 and 2 (**L2RL**)/(**R2RL**), press "SPK" (10) and "MASK" (11) pushbuttons, then press pilot/copilot push-to-talk button (**L8TB3**)/(**R8TB3**) on pilot/copilot control column/wheel (**L8TB**)/(**R8TB**).
 - (3) Speak in microphone (4) and make sure that you hear your voice from pilot/copilot loudspeaker (**L8RL**)/(**R8RL**).
 - (4) On ICS 1 and 2 (**L2RL**)/(**R2RL**), press "MASK" (11) and "SPK" (10) pushbuttons, then press pilot/copilot push-to-talk button (**L8TB3**)/(**R8TB3**).
 - (5) Speak in microphone (4) and make sure that you do not hear your voice from pilot/copilot loudspeaker (**L8RL**)/(**R8RL**).
 - (6) De-energize the aircraft systems with batteries (refer to the procedure (Refer to **TASK 24-00-00-860-801**), paragraph "De-energization from Batteries").

4. MASK CHECK

- A. Clean pilot/copilot oxygen mask (**L502WH**)/(**R502WH**) (Refer to **TASK 35-10-05-100-801**).
- B. Inspect the different parts of pilot/copilot oxygen mask (**L502WH**)/(**R502WH**) and check them for correct condition (anomalies, cuts, distortions):
 - regulator,
 - mask,
 - harness,
 - oxygen hose,
 - radio jack connector,
 - oxygen flow indicator.

FALCON 900EX AIRCRAFT MAINTENANCE MANUAL

- C. Stow pilot/copilot oxygen mask (L502WH)/(R502WH) in pilot/copilot oxygen mask box (L504WH)/(R504WH) (Refer to TASK 35-10-05-900-801).

FALCON 900EX AIRCRAFT MAINTENANCE MANUAL

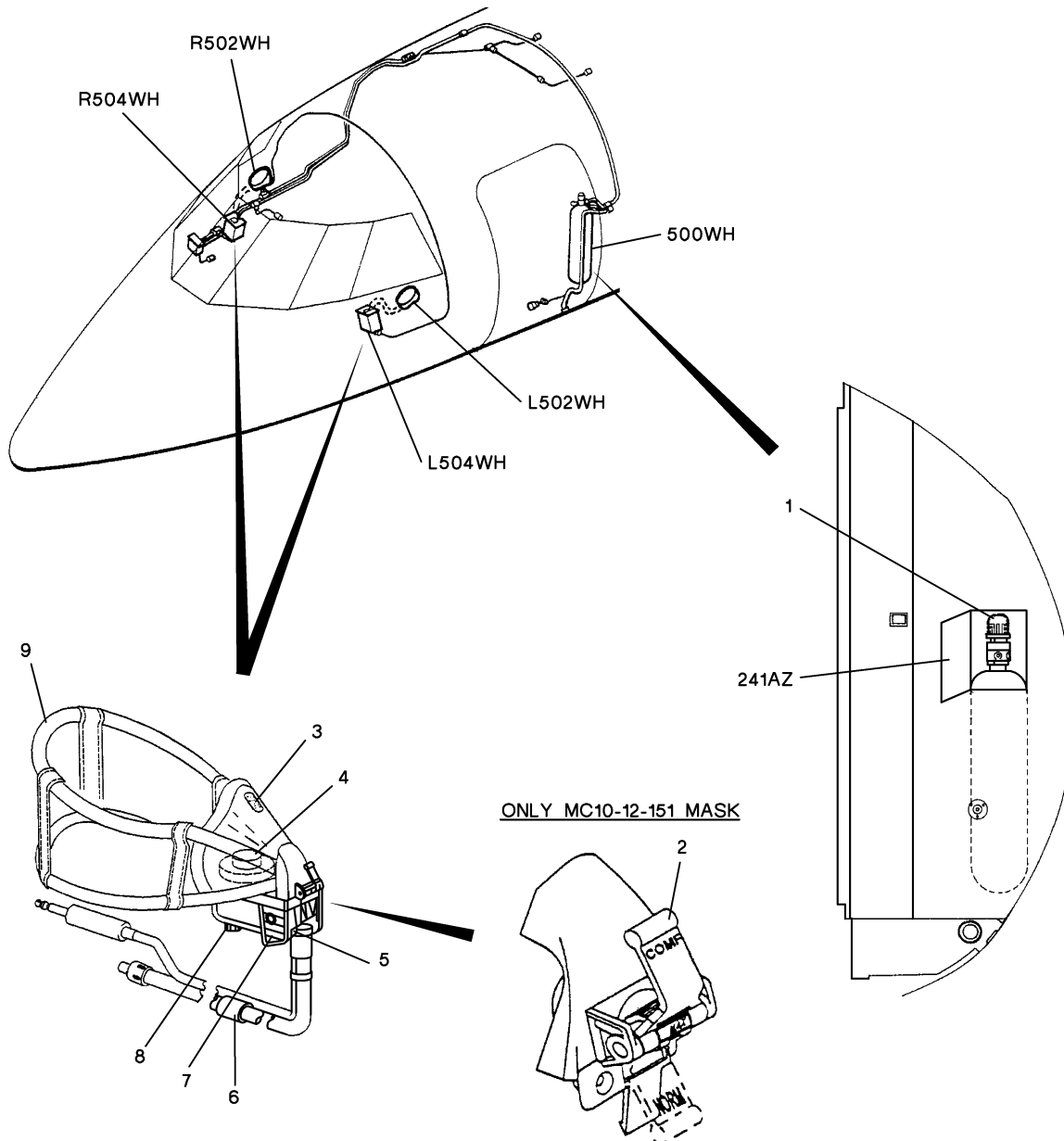


Figure 1: Operational Test of Crew Oxygen Masks

FALCON 900EX AIRCRAFT MAINTENANCE MANUAL

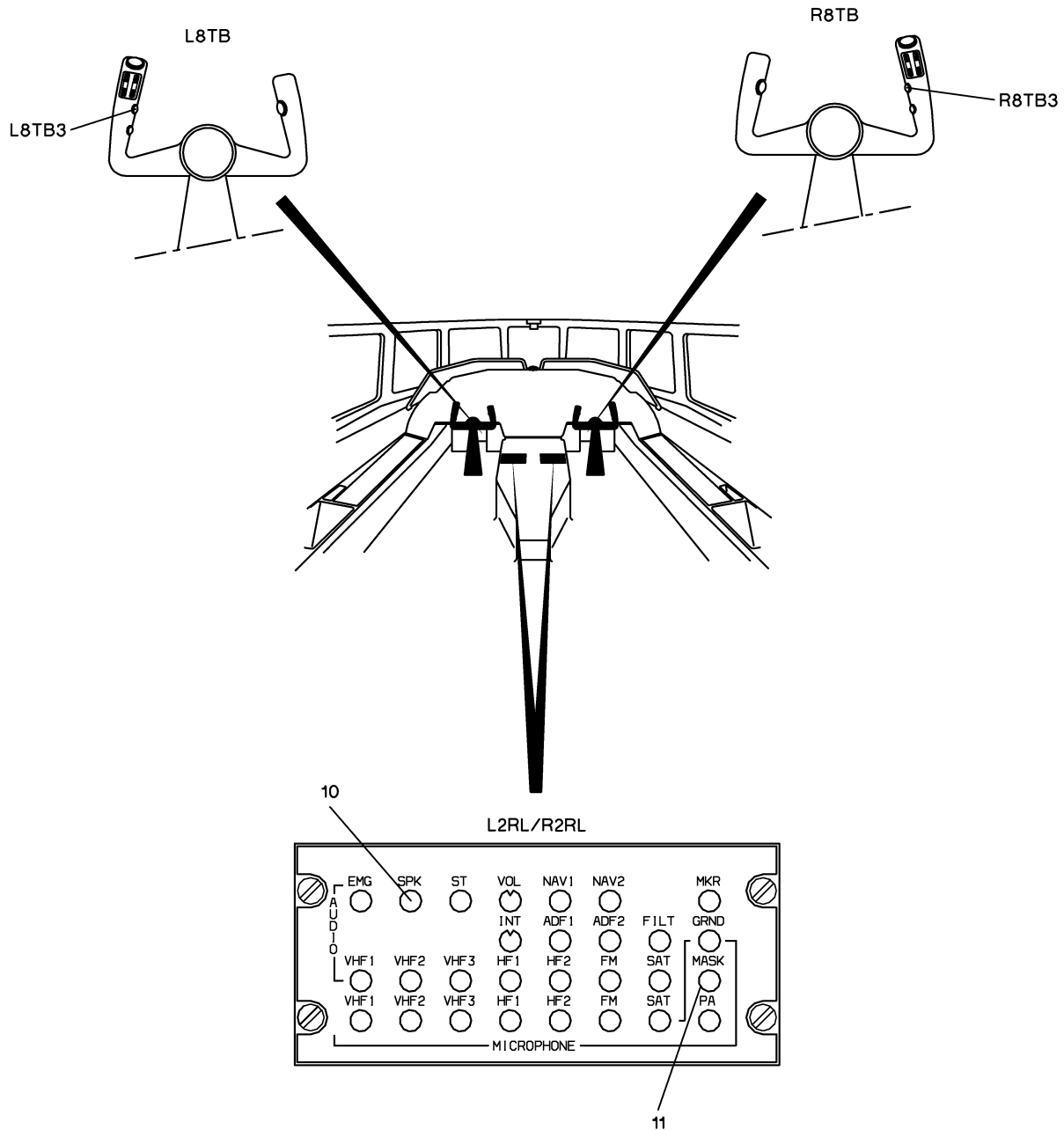


Figure 2: Location of Cockpit Controls