

Project No: **BDHRN002**Job Card No **0044**

Notif.No.: 10049017

Activity: **1000**

Rev No: 20000622

Model.: F900EX

Sheet 1 of 1

A/C Regn: **D-AHRN**

Serial No.: 096

Type: F900EX

Starting Phase: Routine

Starting Work Centre: FALCON A/C TEAM

Job Description: **LUB R/H MLG & MLG Doors**

ETOPS A/C: No

RVSM A/C: No

Warranty: -

ATA: 32

Check Type: 1A CHECK

Work Center	
FALCON A/C	

**Zone: 100****Access Required for this task:**

741AB

## Corrective Action

0001	<b>Task carried out in accordance with the attached Customer Card that quotes the Operator code detailed below.</b>					  Order: 80069323 Operation: 0010 Phase: Routine - scheduling activity Work Center:FALCON A/C TEAM
	Accomplished		Inspected			
	Pers. No.	Date	Pers. No.	Date		
	Stamp		Stamp			

Completed & Confirmed on SAP IAW MOE 2.13.

**Defect Card Raised**

## Components Removed/Installed

	Part Number	Part Name	S/N	Location	Comm. Off/On
OFF					
ON					
OFF					
ON					
OFF					
ON					
OFF					
ON					

Occurance Report Raised? YES ☐

Operations Above &amp; Notifications Completed IAW MOE 2.13.



OEM Code: 32-10-00-640-801

Operator Code: 32-10-00-640-801-02

Form No: JA-SAP-MTX-002

Printed by: ADAMOVIC G



Printed: 03.09.2012

13:34:17

Print No: 1

Project No: **BDHRN002**Job Card No **0107**

Notif.No.: 10049016

Activity: **1000**

Rev No: 20000622

Model.: F900EX

Sheet 1 of 1

A/C Regn: **D-AHRN**

Serial No.: 096

Type: F900EX

Starting Phase: Routine

Starting Work Centre: FALCON A/C TEAM

Job Description: **LUB L/H MLG & MLG Doors**

ETOPS A/C: No

RVSM A/C: No

Warranty: -

ATA: 32

Check Type: 1A CHECK

Work Center	
FALCON A/C	

**Zone: 700****Access Required for this task:**

731AB,741AB

## Corrective Action

0001	<b>Task carried out in accordance with the attached Customer Card that quotes the Operator code detailed below.</b>					  Order: 80069267 Operation: 0010 Phase: Routine - scheduling activity Work Center:FALCON A/C TEAM
	Accomplished		Inspected			
	Pers. No.	Date	Pers. No.	Date		
	Stamp		Stamp			

Completed & Confirmed on SAP IAW MOE 2.13.

**Defect Card Raised**

## Components Removed/Installed

	Part Number	Part Name	S/N	Location	Comm. Off/On
OFF					
ON					
OFF					
ON					
OFF					
ON					
OFF					
ON					

Occurance Report Raised? YES ☐

Operations Above &amp; Notifications Completed IAW MOE 2.13.

OEM Code: 32-10-00-640-801

Operator Code: 32-10-00-640-801-01

Form No: JA-SAP-MTX-002

Printed by: ADAMOVIC G



Printed: 03.09.2012

13:34:17

Print No: 1

Operator: **HERON AVIATION**

Work Card No.: **32.010**

Serial No.: **096**

Model: **FALCON 900EX**

**PKG # 2 2A INSPECTION**

Reg No.: **D-AHRN**

Workorder No.: \_\_\_\_\_

	Date	A/C HRS	AFL	APH			
Due At	<b>25-NOV-2012</b>	<b>4410:47</b>					
Accomplished							

TECHNICIAN SIGNATURE: \_\_\_\_\_ KIND OF CERTIFICATE & NO.: \_\_\_\_\_

INSPECTED BY: \_\_\_\_\_ KIND OF CERTIFICATE & NO.: \_\_\_\_\_

TECH	INSP	LABOR-HRS HRS.MINS
------	------	-----------------------

**>32-10-00-640-801-01 LUBRICATION OF THE LH MAIN LANDING GEARS (MLG) AND MLG DOORS**

\_\_\_\_\_

REMARKS : \_\_\_\_\_

AMM 32-10-00-640-801

**>32-10-00-640-801-02 LUBRICATION OF THE RH MAIN LANDING GEARS (MLG) AND MLG DOORS**

\_\_\_\_\_

REMARKS : \_\_\_\_\_

AMM 32-10-00-640-801

## FALCON 900EX AIRCRAFT MAINTENANCE MANUAL

### TASK 32-10-00-640-801 LUBRICATION OF THE MAIN LANDING GEARS (MLG) AND MLG DOORS

**WARNING: HYDRAULIC AND ELECTRICAL POWER SUPPLIES ARE PROHIBITED THROUGHOUT THE FOLLOWING CHECKS.**

#### 1. OVERVIEW OF THE JOB

Operation codes:

- 32-10-00-640-801-01                      LH MLG and doors
- 32-10-00-640-801-02                      RH MLG and doors

Lubrication can be performed with A/C on its wheels or jacked up.

#### 2. LOGISTICS

##### A. References

Reference	Designation
• <a href="#">32-10-00-860-801</a>	MANUAL OPENING / CLOSING OF THE MLG DOORS

##### B. Tools and Ground Support Equipment

Reference	Designation	Quantity
• <a href="#">F7XC202000008</a>	TOOL BOX	

##### C. Ingredients and Consumable Products

Designation	Additional designation
• <a href="#">LUBRICATING OIL</a>	
• <a href="#">SYNTHETIC GREASE</a>	MIL-PRF-81322
• <a href="#">P-D-680B</a>	WHITE SPIRIT

##### D. Access

Reference	Designation
• <a href="#">731AB</a>	LH MLG MAIN DOOR
• <a href="#">741AB</a>	RH MLG MAIN DOOR

##### E. Miscellaneous

- CLEAN CLOTHS (LOCAL PROCUREMENT)
- DRY COMPRESSED AIR (LOCAL PROCUREMENT)

#### 3. PRELIMINARY STEPS



- A. Manually open main L/G doors ([731AB](#)) and ([741AB](#)) (Refer to [TASK 32-10-00-860-801](#), paragraph "Manual Opening of Main Landing Gear Doors").

## FALCON 900EX AIRCRAFT MAINTENANCE MANUAL

---

### 4. **LUBRICATION**

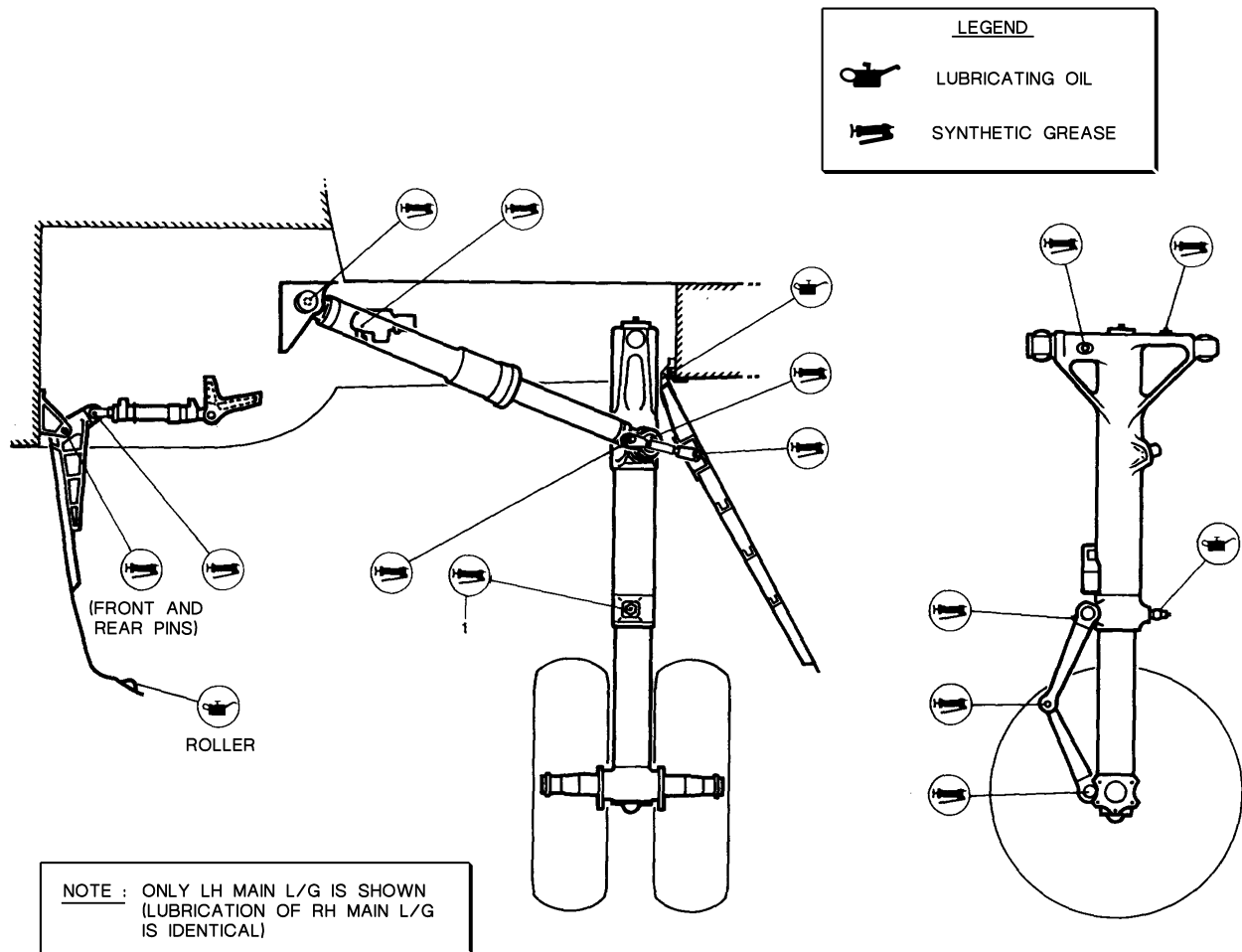
Refer to **fig. 1**

- A. Clean grease nipples with **P-D-680B** and cloths.
- B. Blow dry with compressed air.
- C. Check grease nipples for condition.
- D. Lubricate indicated elements with **synthetic grease** and **lubricating oil**, as instructed in the legend.
- ◆
- E. Lubricate the hinge of the fairing door as follows:
  - (1) If the A/C is on wheels:
    - (a) Disconnect the fairing door (Refer to **TASK 32-12-00-220-802**).
    - (b) Using **lubricating oil**, lubricate the knuckle and the pin of the hinge.  
During lubrication, actuate the fairing door to facilitate **lubricating oil** seepage into the hinge.
    - (c) Wipe excess of **lubricating oil** with clean cloths.
    - (d) Connect the fairing door (Refer to **TASK 32-12-00-220-802**).
  - (2) If the A/C is on jacks:
    - (a) Disconnect and remove the fairing door (Refer to **TASK 32-12-00-220-802**).
    - (b) Clean the hinge and the pin of the fairing door with **P-D-680B**.
    - (c) Blow dry with compressed air.
    - (d) Using **lubricating oil**, lubricate the knuckle and the pin of the hinge.
    - (e) Install and connect the fairing door (Refer to **TASK 32-12-00-220-802**).
  - (3) Lubricate the L/G strut lower bearing ball joint nipple
    - This nipple (1-fig. 1) provides grease to the shock absorber lower guiding ball joint.  
**NOTE:** The amount of grease is sufficient when grease appears on the shock absorber sliding rod.
    - End the L/G locking roller greassing by manual coating with **synthetic grease**.

### 5. **FINAL STEPS**

- A. Manually close main L/G doors (**731AB**) and (**741AB**) (Refer to **TASK 32-10-00-860-801**, paragraph "Closing of Main Landing Gear Doors").

## FALCON 900EX AIRCRAFT MAINTENANCE MANUAL



**Figure 1: LUBRICATION OF MAIN L/G AND DOORS**