

Project No: **BDHRN002**Job Card No **0060**

Notif.No.: 10049110

Activity: **1003**

Rev No: 20000622

Model.: F900EX

Sheet 1 of 1

A/C Regn: **D-AHRN**

Serial No.: 096

Type: F900EX

Starting Phase: Routine

Starting Work Centre: FALCON A/C TEAM

Job Description: **SERV Emergency Exit Door**

ETOPS A/C: No

RVSM A/C: No

Warranty: -

ATA: 52

Check Type: 2A+ Inspection

Work Center	
FALCON A/C	

**Zone: 200****Access Required for this task:**

EMERG,PAX

## Corrective Action

0001	<b>Task carried out in accordance with the attached Customer Card that quotes the Operator code detailed below.</b>					  Order: 80069331 Operation: 0010 Phase: Routine - scheduling activity Work Center:FALCON A/C TEAM
	Accomplished		Inspected			
	Pers. No.	Date	Pers. No.	Date		
	Stamp		Stamp			

Completed & Confirmed on SAP IAW MOE 2.13.

**Defect Card Raised**

## Components Removed/Installed

	Part Number	Part Name	S/N	Location	Comm. Off/On
OFF					
ON					
OFF					
ON					
OFF					
ON					
OFF					
ON					

Occurance Report Raised? YES ☐

Operations Above &amp; Notifications Completed IAW MOE 2.13.



OEM Code: 52-20-00-610-801

Operator Code: 52-20-00-610-801-02

Form No: JA-SAP-MTX-002

Printed by: ADAMOVIC G



Printed: 03.09.2012

13:34:17

Print No: 1

Operator: **HERON AVIATION**

Work Card No.: **52-20-00-610-801-02**

Serial No.: **096**

Model: **FALCON 900EX**

**PKG # 12 2A+ INSPECTION**

Reg No.: **D-AHRN**

Workorder No.: \_\_\_\_\_

	Date	A/C HRS	AFL	APH			
Due At	<b>25-NOV-2012</b>						
Accomplished							

TECHNICIAN SIGNATURE: \_\_\_\_\_ KIND OF CERTIFICATE & NO.: \_\_\_\_\_

INSPECTED BY: \_\_\_\_\_ KIND OF CERTIFICATE & NO.: \_\_\_\_\_

TECH	INSP	LABOR-HRS HRS.MINS
------	------	-----------------------

**>52-20-00-610-801- SERVICING EMERGENCY EXIT DOOR  
02**

REMARKS : \_\_\_\_\_

AMM 52-20-00-610-801

## FALCON 900EX AIRCRAFT MAINTENANCE MANUAL

### TASK 52-20-00-610-801 SERVICING OF THE EMERGENCY EXIT DOOR

#### 1. OVERVIEW OF THE JOB

Operation codes:

- 52-20-00-610-801-01 Test of the emergency exit door unlocking from inside the cabin
- 52-20-00-610-801-02 Servicing of the emergency exit door

NOTE: Two operators are necessary to install the emergency exit door (**EMERG**).

#### 2. LOGISTICS

##### A. References

Reference	Designation
• <u>20-60-00-370-803</u>	APPLICATION OF PU66 CELOMER PAINT SCHEME
• <u>52-20-01-900-801</u>	REMOVAL / INSTALLATION OF THE EMERGENCY EXIT DOOR
• <u>52-20-05-960-801</u>	REPLACEMENT OF THE EMERGENCY EXIT DOOR SEAL
• <u>52-20-13-960-801</u>	REPLACEMENT / ADJUSTMENT OF THE EMERGENCY EXIT DOOR STOPS

##### B. Tools and Ground Support Equipment

Reference	Designation	Quantity
• <u>F7XC202000008</u>	TOOL BOX	

##### C. Ingredients and Consumable Products

Designation	Additional designation
• <u>LOW FREEZE POINT GREASE</u>	MIL-PRF-23827
• <u>LUBRICATING OIL</u>	
• <u>ALIPHATIC NAPHTHA</u>	
• <u>MOLY LUBRICANT</u>	
• <u>WATER ABRASIVE PAPER</u>	
• <u>PRUSSIAN BLUE</u>	
OR <u>DEVELOPER</u>	
• <u>WASH PRIMER</u>	P99
• <u>ANTI-CORROSION PRIMER</u>	PAC 33
• <u>TOP COAT PU66</u>	

##### D. Access

Reference	Designation
• <u>EMERG</u>	EMERGENCY EXIT DOOR
• <u>PAX</u>	PASSENGER DOOR

##### E. Miscellaneous

- CARDBOARD SHIMS (LOCAL PROCUREMENT)
- CLEAN LINT-FREE CLOTH (LOCAL PROCUREMENT)

## FALCON 900EX AIRCRAFT MAINTENANCE MANUAL

---

### 3. TEST OF THE EMERGENCY EXIT DOOR UNLOCKING FROM INSIDE THE CABIN

- A. Pull the "PULL HERE TO OPEN" cover of the unlocking handle.
- B. Pull out the unlocking handle while holding emergency exit door.
- C. Check that the upper section of emergency exit door is released and that the emergency exit door swings on its two lower ball-joints.
- D. Remove emergency exit door (**EMERG**).

### 4. SERVICING OF THE EMERGENCY EXIT DOOR

Refer to **fig. 1** and **fig. 2**

#### A. Preliminary steps

- (1) Remove emergency exit door (**EMERG**) (Refer to **TASK 52-20-01-900-801**, paragraph "Removal of Emergency Exit Door"), if not previously removed.

#### B. Inspection/Check

##### (1) On the emergency exit door

- (a) Check that the unlocking handle (1) and the locking pawl (3) rotate freely (hard points or play).
- (b) Check the condition and attachment of handle and locking pawl return springs (4).
- (c) Check that the return springs (4) fulfill their functions.
- (d) Check the condition and attachment of the seal (5) around emergency exit door; replace the seal if necessary (Refer to **TASK 52-20-05-960-801**).
- (e) On the external side of the emergency exit door, check the external frangible disk (6) for:
  - condition,
  - attachment,
  - no separation,
  - no tearing.

##### (2) On the frame

- (a) Check the condition of the fuselage side of the frame (seal support), paying particular attention to the two lower ball-joints (2) (**fig. 1** or **fig. 2**: cross-section C).

- (b) On the fuselage side of the frame, check the upper and the lateral stops (8) for scratch.

It is possible to surface-hone a scratch, provided that the condition of wear defined in paragraph 4.B.(2)(c) are met. After the surface-honing, apply the PU66 paint scheme (**wash primer + anti-corrosion primer + top coat PU66**) (Refer to **TASK 20-60-00-370-803**) on the stop.

- (c) Check of wear on the stops (8)

- 1 Apply **prussian blue** or **developer** on each emergency exit door stops (**fig. 1** or **fig. 2**: cross-section A, item (7)).
- 2 Position and push the emergency exit door (**EMERG**) into its frame.

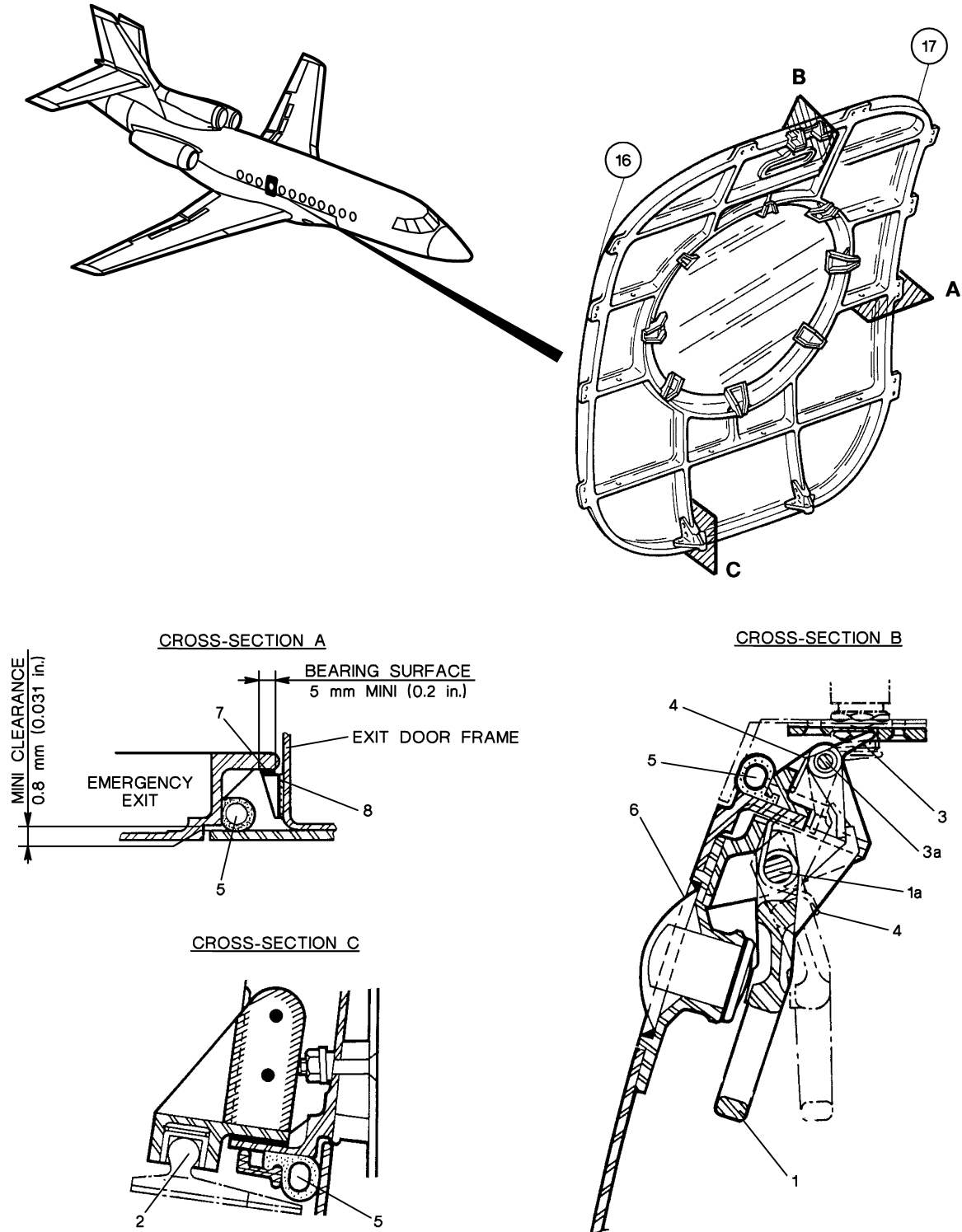
## FALCON 900EX AIRCRAFT MAINTENANCE MANUAL

---

- 3 In the area adjacent to each stops, check the clearance between the inner section of the frame and the emergency exit door. It must be greater than or equal to 0.8 mm (0.031 in) (**fig. 1** or **fig. 2** : cross-section A).
  - 4 Remove the emergency exit door (**EMERG**).
  - 5 Check that the size of the bearing surface (surface without **prussian blue** or **developer**) is greater than or equal to 5 mm (0.2 in) (**fig. 1** or **fig. 2** : cross-section A).
  - 6 If one of this value is out of tolerance, adjust or replace the stops (Refer to **TASK 52-20-13-960-801**).
- (d) Check the condition of the emergency exit door electrical power supply contacts (electric-arc burns).
- If necessary, clean with **water abrasive paper** (grade 1200).
- C. Lubrication (**fig. 1** or **fig. 2**)
- (1) Locking mechanism
    - (a) While slowly actuating the handle (1), lubricate the following parts with **lubricating oil**:
      - handle shaft (1a),
      - upper lock shaft (3a),
      - both springs (4).
    - (b) Wipe off the excess oil with a cloth.
  - (2) Sparingly lubricate the two lower ball-joints (2) and the stops (8) with **low freeze point grease**.
- D. Seal Servicing
- (1) Clean the seal (5) and its edges with a clean lint-free cloth moistened with **aliphatic naphtha**.
  - (2) Spray a coat of **moly lubricant** on the seal (5).
- E. Final steps
- (1) Install emergency exit door (**EMERG**) (Refer to **TASK 52-20-01-900-801**, paragraph "Installation of Emergency Exit Door").



## FALCON 900EX AIRCRAFT MAINTENANCE MANUAL



(A/C without M3953)

**Figure 1: Emergency Exit - Structure and Locking Mechanism**

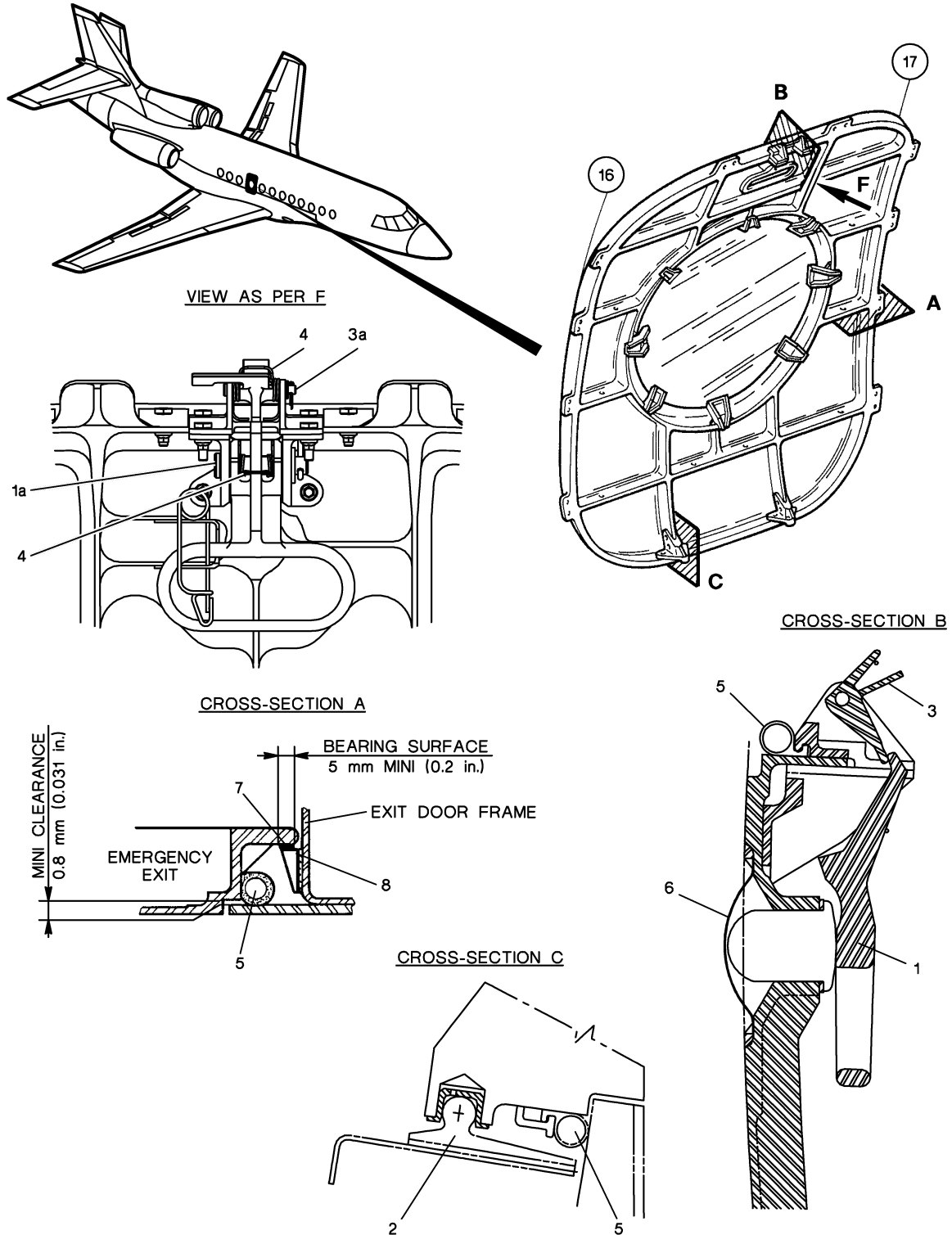


## FALCON 900EX AIRCRAFT MAINTENANCE MANUAL

---



## FALCON 900EX AIRCRAFT MAINTENANCE MANUAL



(A/C with M3953)

**Figure 2: Emergency Exit - Structure and Locking Mechanism**

Effectivity: ALL  
Rev. Date: JUN 10/2011  
**52-20-00-610-801**

page 6 / 6