

Project No: **BDHRN002**Job Card No **0062**

Notif.No.: 10049117

Activity: **1003**

Rev No: 20000622

Model.: F900EX

Sheet 1 of 1

A/C Regn: **D-AHRN**

Serial No.: 096

Type: F900EX

Starting Phase: Routine

Starting Work Centre: FALCON A/C TEAM

Job Description: **LUB Opening Wdow Mechanism**

ETOPS A/C: No

RVSM A/C: No

Warranty: -

ATA: 56

Check Type: 2A+ Inspection

Work Center	
FALCON A/C	

**Zone: 200****Access Required for this task:**

PAX

## Corrective Action

0001	<b>Task carried out in accordance with the attached Customer Card that quotes the Operator code detailed below.</b>					  Order: 80069239 Operation: 0010 Phase: Routine - scheduling activity Work Center: FALCON A/C TEAM
	Accomplished		Inspected			
	Pers. No.	Date	Pers. No.	Date		
	Stamp		Stamp			

Completed & Confirmed on SAP IAW MOE 2.13.

**Defect Card Raised**

## Components Removed/Installed

	Part Number	Part Name	S/N	Location	Comm. Off/On
OFF					
ON					
OFF					
ON					
OFF					
ON					
OFF					
ON					

Occurance Report Raised? YES ☐

Operations Above &amp; Notifications Completed IAW MOE 2.13.



OEM Code: 56-10-09-640-801

Operator Code: 56-10-09-640-801-01

Form No: JA-SAP-MTX-002

Printed by: ADAMOVIC G



Printed: 03.09.2012

13:34:17

Print No: 1

Operator: **HERON AVIATION**

Work Card No.: **56.010**

Serial No.: **096**

Model: **FALCON 900EX**

**PKG # 12 2A+ INSPECTION**

Reg No.: **D-AHRN**

Workorder No.: \_\_\_\_\_

	Date	A/C HRS	AFL	APH			
Due At	<b>25-NOV-2012</b>						
Accomplished							

TECHNICIAN SIGNATURE: \_\_\_\_\_ KIND OF CERTIFICATE & NO.: \_\_\_\_\_

INSPECTED BY: \_\_\_\_\_ KIND OF CERTIFICATE & NO.: \_\_\_\_\_

TECH	INSP	LABOR-HRS HRS.MINS
------	------	-----------------------

**>56-10-09-640-801- LUBRICATION OPENING WINDOW MECHANISM  
01**

REMARKS : \_\_\_\_\_

AMM 56-10-09-640-801

## FALCON 900EX AIRCRAFT MAINTENANCE MANUAL

### TASK 56-10-09-640-801 LUBRICATION OF THE OPENING WINDOW MECHANISM

#### 1. OVERVIEW OF THE JOB

Operation code: 56-10-09-640-801-01 LH sliding window (**L35HH**)

#### 2. LOGISTICS

##### A. References

Reference	Designation
• <b>56-10-09-900-801</b>	REMOVAL / INSTALLATION OF THE OPENING WINDOW

##### B. Tools and Ground Support Equipment

Reference	Designation	Quantity
• <b>F7XC202000008</b>	TOOL BOX	

##### C. Ingredients and Consumable Products

Designation	Additional designation
• <b>LUBRICATING OIL</b>	
• <b>MOLY LUBRICANT</b>	
• <b>ALIPHATIC NAPHTHA</b>	

##### D. Access

Reference	Designation
• <b>PAX</b>	PASSENGER DOOR

##### E. Miscellaneous

- CLOTH (LOCAL PROCUREMENT)

#### 3. PRELIMINARY STEPS

Refer to **fig. 1**

- Open opening window (**L35HH**).
- Check that opening window (**L35HH**) slides freely and that locking in open position against rear stop is effective.
- Remove the trim panel from the opening window.

#### 4. CHECKS/LUBRICATION

Refer to **fig. 1**

- Lubricate all mechanisms with **lubricating oil**.
- Open and close the window several times, lubricate again if required and wipe excess of **lubricating oil**.

## **FALCON 900EX AIRCRAFT MAINTENANCE MANUAL**

---

- C. With the opening window open, visually check mobile connector (71P) and fixed connector (71J):
- check for burns, signs of carbonization or arcing,
  - make sure that the insulating rings are attached to fixed connector (71J),
  - if defects are found, replace the connector and adjust it (Refer to **TASK 56-10-09-900-801**).

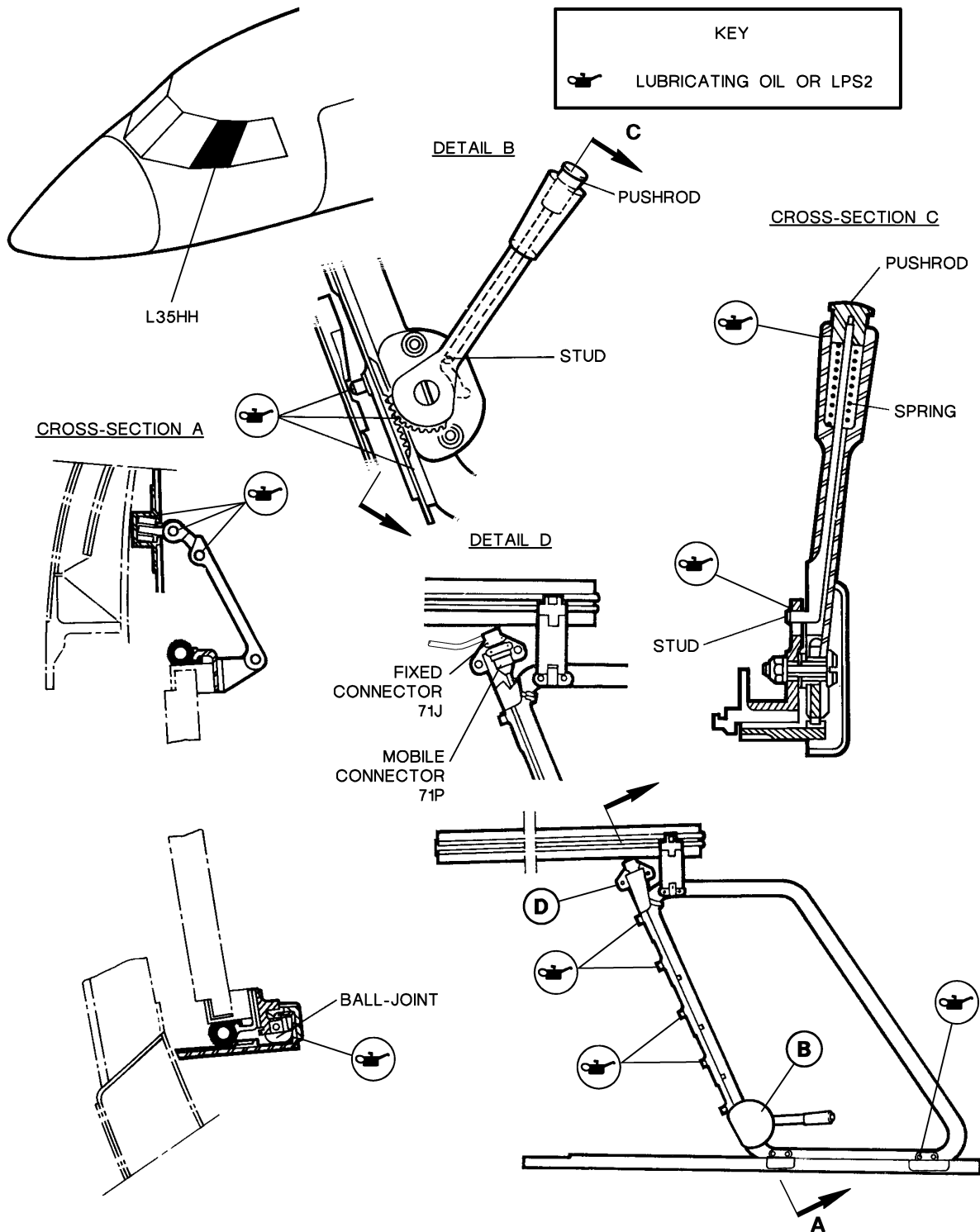
### **5. SEAL MAINTENANCE**

- A. Clean the seal and its vicinity with a cloth moderately moistened with **aliphatic naphtha**.
- B. Spray a **moly lubricant** coat on the seal.

### **6. FINAL STEPS**

- A. Install the trim panel on the opening window.
- B. Close and lock opening window (**L35HH**).

# FALCON 900EX AIRCRAFT MAINTENANCE MANUAL



**Figure 1: LUBRICATION OF OPENING WINDOW MECHANISM**