

Project No: **BDHRN002**Job Card No **0064**

Notif.No.: 10049111

Activity: **1003**

Rev No: 20000622

Model.: F900EX

Sheet 1 of 1

A/C Regn: **D-AHRN**

Serial No.: 096

Type: F900EX

Starting Phase: Routine

Starting Work Centre: FALCON A/C TEAM

Job Description: **SERV BAGGAGE COMPARTMENT DOOR**

ETOPS A/C: No

RVSM A/C: No

Warranty: -

ATA: 52

Check Type: 2A+ Inspection

Work Center	
FALCON A/C	

Zone: 200,300,800**Access Required for this task:**

281DZ,850DZ,850EZ,850FZ,850GZ,BAG,PAX

Corrective Action

0001	Task carried out in accordance with the attached Customer Card that quotes the Operator code detailed below.					 Order: 80069277 Operation: 0010 Phase: Routine - scheduling activity Work Center:FALCON A/C TEAM
	Accomplished		Inspected			
	Pers. No.	Date	Pers. No.	Date		
	Stamp		Stamp			

Completed & Confirmed on SAP IAW MOE 2.13.

Defect Card Raised

Components Removed/Installed

	Part Number	Part Name	S/N	Location	Comm. Off/On
OFF					
ON					
OFF					
ON					
OFF					
ON					
OFF					
ON					

Occurance Report Raised? YES ☐

Operations Above & Notifications Completed IAW MOE 2.13.



OEM Code: 52-30-00-610-801

Operator Code: 52-30-00-610-801-01

Form No: JA-SAP-MTX-002

Printed by: ADAMOVIC G



Printed: 03.09.2012

13:34:17

Print No: 1

Operator: **HERON AVIATION** Work Card No.: **52.050**
Serial No.: **096** Model: **FALCON 900EX** **PKG # 12 2A+ INSPECTION**
Reg No.: **D-AHRN** Workorder No.: _____

	Date	A/C HRS	AFL	APH			
Due At	25-NOV-2012						
Accomplished							

TECHNICIAN SIGNATURE: _____ KIND OF CERTIFICATE & NO.: _____

INSPECTED BY: _____ KIND OF CERTIFICATE & NO.: _____

52-30-01-900-801-01 BAGGAGE COMPARTMENT DOOR AMM 52-30-01-900-801

REASON REMOVED: (CHECK ONE) ☐ TIME EXPIRED ☐ FAILURE ☐ WORN ☐ LOANER ☐ SCHEDULING CONV
☐ MOD/UPGRADE ☐ SERVICE ☐ ENGINE CHANGE ☐ TIRE CHANGE ☐ SWAP/TRBLE SHOOT ☐ DAMAGED ☐ UNKNOWN

If removed P/N & S/N information is incorrect please provide details below.

REMOVED P/N	FGFB299B5		S/N	BZ269		LABOR-HRS	
INSTALLED P/N			S/N			PART COST\$	
INSTALLED TSN	MOS	INSTALLED TSO	MOS	TIME SINCE REPAIR	MOS	WARRANTY TIME REMAINING	MOS
	HRS		HRS		HRS		HRS
	LDGS		LDGS		LDGS		LDGS
				TECH:		INSP:	

REMARKS : _____

Note: INITIAL THE SERVICE TASKS BELOW WHICH WERE ACCOMPLISHED DURING CHANGE. IF TASKS WERE NOT ACCOMPLISHED, RECORD TIME ACCRUED SINCE TASK WAS LAST ACCOMPLISHED OR CHECK CONTINUE TIME (CT).

TECH	INSP	LABOR-HRS HRS.MINS	TIME ACCRUED	CONTINUE TIME
------	------	-----------------------	-----------------	------------------

>52-30-00-610-801-01 SERVICING BAGGAGE COMPARTMENT DOOR

REMARKS : _____

AMM 52-30-00-610-801

FALCON 900EX AIRCRAFT MAINTENANCE MANUAL

TASK 52-30-01-900-801 REMOVAL / INSTALLATION OF THE BAGGAGE COMPARTMENT DOOR

1. OVERVIEW OF THE JOB

Operation code: 52-30-01-900-801-01

NOTE: To remove and install the baggage compartment door (**BAG**) three operators are necessary.

2. LOGISTICS

A. References

Reference	Designation
• 52-30-00-860-801	OPENING / CLOSING OF THE BAGGAGE COMPARTMENT DOOR
• 53-60-01-900-801	REMOVAL / INSTALLATION OF THE FUSELAGE FAIRINGS

B. Tools and Ground Support Equipment

Reference	Designation	Quantity
• F7XC202000008	TOOL BOX	

C. Ingredients and Consumable Products

Designation	Additional designation
• LOW FREEZE POINT GREASE	MIL-PRF-23827
• ALIPHATIC NAPHTHA	

D. Spare Parts

Reference	Designation	Quantity
• MS24665-134	SPLIT PIN	2

E. Access

Reference	Designation
• 193DL	UNDER-BAG DOOR FUSELAGE FAIRING
• BAG	BAGGAGE COMPARTMENT DOOR

F. Miscellaneous

- SUPPORT STAND (LOCAL PROCUREMENT)

3. PRELIMINARY STEPS

- Remove panel ([193DL](#)) to gain access to the hinges of baggage compartment door (**BAG**) (Refer to [TASK 53-60-01-900-801](#)).
- Open baggage compartment door (**BAG**) (Refer to [TASK 52-30-00-860-801](#)).

4. REMOVAL

Refer to **fig. 1** and **fig. 2**

FALCON 900EX AIRCRAFT MAINTENANCE MANUAL

- A. Disconnect cut-out connector (285P).
- B. Remove electrical cable guide attached to the forward hinge shaft of the door (2 screws).
- C. A second operator must support the door while the lifting cable is being disconnected from the forward end of the frame: recover the washer, the nut and the crankpin assembly (**fig. 2**).
- D. Coil the cable and secure it to the door.
- E. Two operators must support the door while the two hinge pins are being removed.
- F. Remove the door and install it on a support stand.

5. PRELIMINARY STEPS BEFORE INSTALLATION

- A. Clean hinges and hinge pins with aliphatic naphtha.
- B. Coat pins and bores with low freeze point grease.

6. INSTALLATION

Refer to **fig. 1** and **fig. 2**

- A. Position the door opposite its hinges in the "open" position.
- B. Insert the pins in the bearings, tighten the nut up to the split pin hole and insert a new split pin (**MS24665-134**).
- C. Secure the lifting cable to the forward end of the frame: engage the cable endpiece on the upper attachment pin then install the washer, the attachment nut and the crankpin assembly (**fig. 2**).
- D. Install the electrical cable guide on the forward hinge shaft of the door.
- E. Connect cut-out connector (285P).
- F. Do several openig / closing cycles of the baggage compartment door (**BAG**) (Refer to **TASK 52-30-00-860-801**) to make sure that it operates correctly.

7. FINAL STEPS

- A. Install access panel (**193DL**) (Refer to **TASK 53-60-01-900-801**).
- B. Close baggage compartment door (**BAG**) (Refer to **TASK 52-30-00-860-801**).

FALCON 900EX AIRCRAFT MAINTENANCE MANUAL

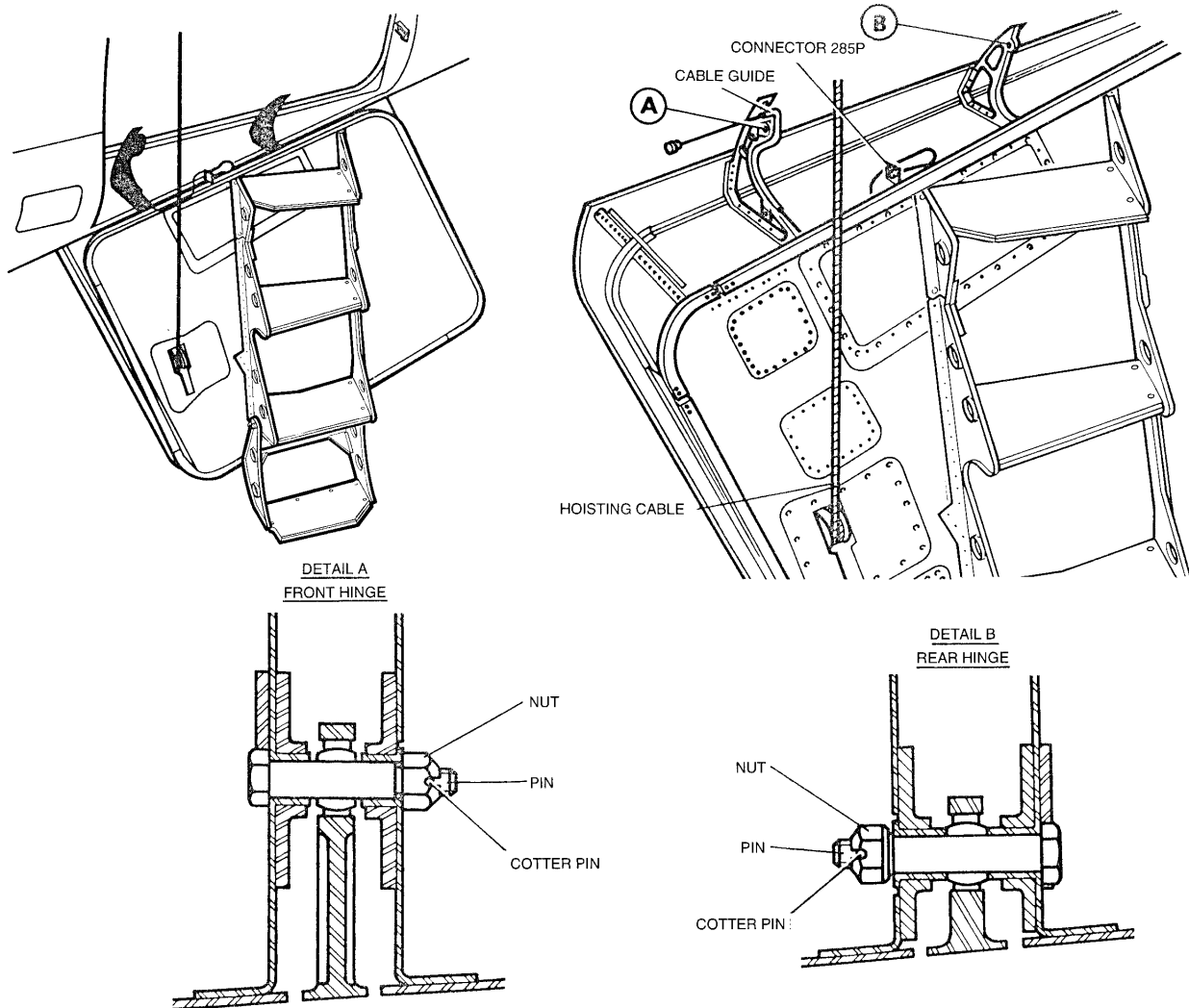


Figure 1: Removal/Installation of Baggage Compartment Door

FALCON 900EX AIRCRAFT MAINTENANCE MANUAL

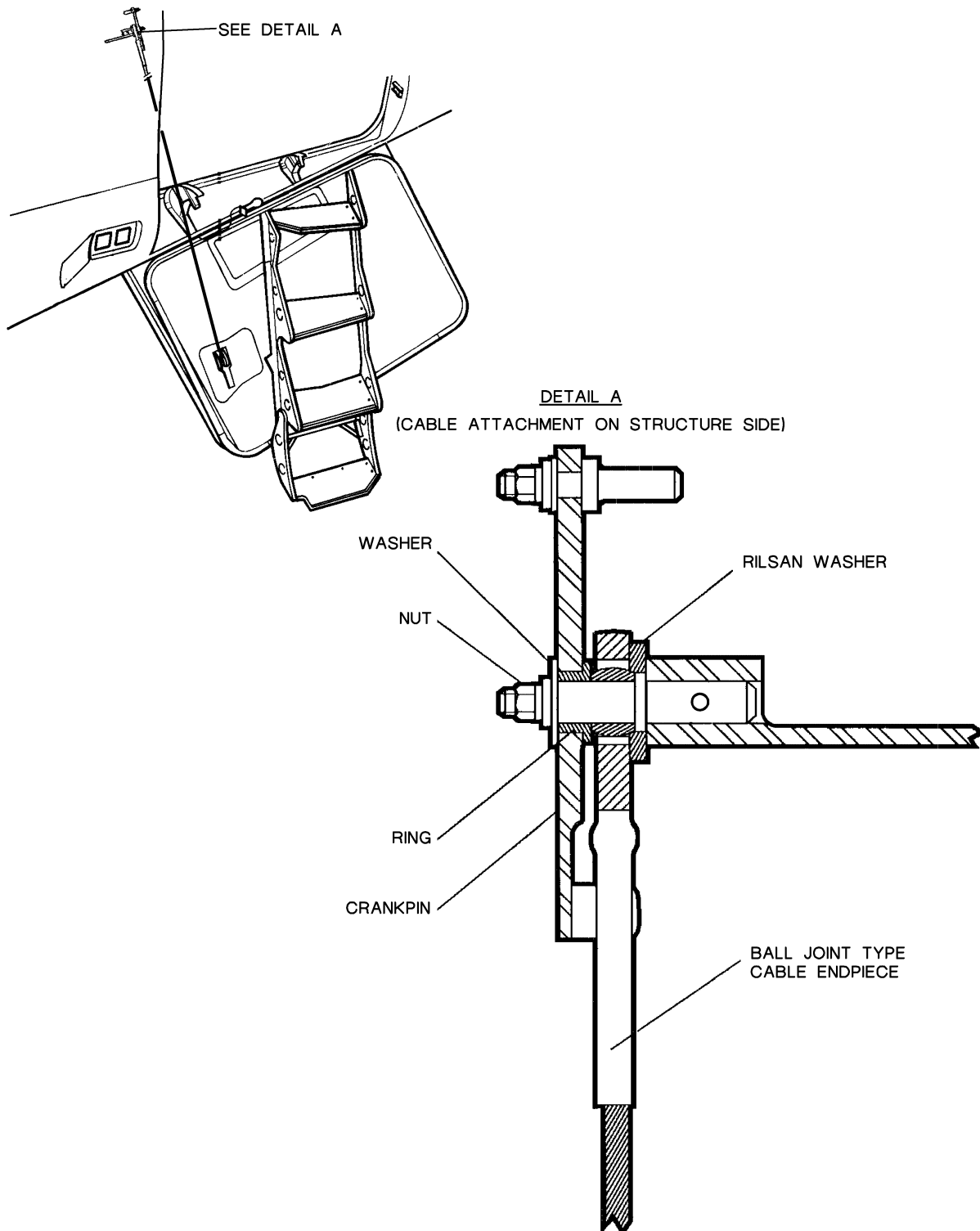


Figure 2: Attachment of Reducing Gear Motor Cable on Structure Side

FALCON 900EX AIRCRAFT MAINTENANCE MANUAL

TASK 52-30-00-610-801 SERVICING OF THE BAGGAGE COMPARTMENT DOOR

WARNING: MAKE SURE THAT NO PERSONNEL IS STANDING ON, AROUND OR BELOW THE BAGGAGE COMPARTMENT DOOR BEFORE MOVING IT, AS THIS CAN CAUSE ACCIDENTS.

CAUTION: THE MAXIMUM PERMISSIBLE WEIGHT ON THE DOOR IS 100 KG (220LB).

1. OVERVIEW OF THE JOB

Operation code: 52-30-00-610-801-01

NOTE: Two operators are required to perform this operation.

2. LOGISTICS

A. References

Reference	Designation
• <u>24-00-00-860-801</u>	ENERGIZATION / DE-ENERGIZATION OF THE AIRCRAFT
• <u>52-30-00-860-801</u>	OPENING / CLOSING OF THE BAGGAGE COMPARTMENT DOOR

B. Tools and Ground Support Equipment

Reference	Designation	Quantity
• <u>F7XC202000008</u>	TOOL BOX	
• <u>TO-20-040</u>	SPRING SCALE - CAPACITY 25 DAN (60 LBF)	
• <u>TO-25-952</u>	VACUUM CLEANER	

C. Ingredients and Consumable Products

Designation	Additional designation
• <u>LUBRICATING OIL</u>	MIL-L-6529
• <u>SYNTHETIC GREASE</u>	MIL-PRF-81322
• <u>BEAD SEALANT</u>	
• <u>COVERING SEALANT</u>	
• <u>CLEANER</u>	MULTIPURPOSE

D. Energy

- ELECTRICAL

E. Access

Reference	Designation
• <u>BAG</u>	BAGGAGE COMPARTMENT DOOR
• <u>PAX</u>	PASSENGER DOOR
• <u>281DZ</u>	CABIN / BAGGAGE COMPARTMENT DOOR
• <u>850DZ</u>	BAGGAGE COMPARTMENT DOOR INNER INSPECTION DOOR
• <u>850EZ</u>	BAGGAGE COMPARTMENT DOOR INNER INSPECTION DOOR
• <u>850FZ</u>	BAGGAGE COMPARTMENT DOOR INNER INSPECTION DOOR
• <u>850GZ</u>	BAGGAGE COMPARTMENT DOOR INNER INSPECTION DOOR

FALCON 900EX AIRCRAFT MAINTENANCE MANUAL

F. Miscellaneous

- PLEXIGLAS SPATULA (LOCAL PROCUREMENT)

3. PRELIMINARY STEPS

Refer to **fig. 1**

- A. Connect the electrical ground power unit (Refer to **TASK 24-00-00-860-801**, paragraph "Connection of the Electrical Ground Power Unit").
- B. Open baggage compartment door (**BAG**) (Refer to **TASK 52-30-00-860-801**, paragraph "Opening Baggage Compartment Door"), without extending folding step.
- C. Remove inspection doors (**850DZ**), (**850EZ**), (**850FZ**) and (**850GZ**).

4. CHECK SAFETY LOCKING MECHANISM

Refer to **fig. 2**

- A. Check condition of safety catch (1) located on the inner skin of baggage compartment door (2):
 - check support (3) riveted to the door for cracks and loose rivets,
 - check free displacement of safety catch (1),
 - check the condition of return spring and safety catch (1) (no distortion or cracks).

CAUTION: THE FOLDING STEP MUST BE FOLDED BEFORE DOOR LIFTING IS INITIATED.

- B. Close the door by hand without using reducing gear motor (**3MC**) and make sure that crankpin (4) located on the endpiece of reducing gear motor cable (5) engages safety catch (1) on the baggage compartment door. The door cannot be opened.

CAUTION: WHEN UNLOCKING SAFETY CATCH (1), HOLD THE DOOR THEN SUPPORT IT FROM THE OUTSIDE WHILE LOWERING IT.

- C. While one operator supports the door from outside the aircraft, one operator unlocks safety catch (1) by lifting it from the inside of the baggage compartment. Crankpin (4) is thus released and the door opens.
- D. Close door (**BAG**) (Refer to **TASK 52-30-00-860-801**, paragraph "Closing Baggage Compartment Door").

5. TESTING

Refer to **fig. 1**, **fig. 3**, **fig. 4** and **fig. 5**

- A. Energize the aircraft systems (Refer to **TASK 24-00-00-860-801**, paragraph "Energization with the Electrical Ground Power Unit").
- B. Check of opening mechanism and of door opening (**fig. 3**)
 - (1) Check operation of lock (1) in "locked" position, making sure that locking/unlocking handle (2) is immobilized.
 - (2) Insert the baggage compartment door key in lock (1) of the baggage compartment door and turn the key counterclockwise by 90° approximately.

FALCON 900EX AIRCRAFT MAINTENANCE MANUAL

- (3) Press pawl (3) to free locking/unlocking handle (2) from the bolts of its housing (10° partial opening, approx.).
- (4) With passenger door (**PAX**) closed, check that "DOORS" light (**2WW64**) illuminates on warning panel (**2WW**) (**fig. 5**).
- (5) Actuate locking/unlocking handle (2) to full rotation (95° approximately).
- (6) Through the opening of the inspection doors, check for correct operation of latch (1) mechanism (**fig. 4**).
- (7) Press pawl (4) to unlock opening/closing handle (5).
- (8) Check for partial opening of handle (5) in its housing (in pre-opening position).
- (9) Turn handle (5) by 120° in the opening direction.
- (10) Check for correct operation of bolt (2) unlocking mechanism (**fig. 4**).
- (11) Measure the time required for the opening of the door under its own weight: 8 ± 2 seconds.
- (12) With the door fully opened, check that the cable length is: $^{+0}_{-12}$ mm ($^{+0}_{-0.5}$ in.) between the tangent point on the hoist pulley and the upper attachment point pin.
- (13) With the door (**BAG**) open and cabin/baggage compartment communication door (**281DZ**) closed, check that baggage compartment dome light (**5LH**) illuminates (**fig. 1**).
- (14) On A/C ≥ 41 , unfold the folding step and check that the door cannot be lifted by pressing "UP" pushbutton (**6MC**).
- (15) Fold back folding step (6) against the baggage compartment door fixed steps.

CAUTION: THE FOLDING STEP MUST BE FOLDED BEFORE DOOR LIFTING IS INITIATED.

C. Check of door closing and of closing mechanism (**fig. 3**)

- (1) Check of door closing
Simultaneously press "UP" pushbutton (**6MC**), which initiates door lifting, and measure the closing duration:
 - if supplied by GPU: 6 e 1 seconds,
 - if supplied by onboard batteries: 7 to 10 seconds.
- (2) As soon as the door is against its frame, measure the power supply cut-off time-delay of reduction gear motor (**3MC**). If the operator does not lock the door with handle (5) within 15 seconds, the door is driven down by reduction gear motor (**3MC**).
- (3) Press "UP" pushbutton (**6MC**) to close the door.
- (4) Check that the lifting sequence is interrupted when "DN" pushbutton (**7MC**) is pressed. The door is driven down by reduction gear motor (**3MC**).
- (5) Press "UP" pushbutton (**6MC**) to close the door.
- (6) Push the door on its frame at the end of lifting, turn opening/closing handle (5) in the closing direction and, using a spring scale, check that the operating load applied to the end of handle (5) does not exceed 5 daN (11.2 lbf) until complete retraction.
- (7) Push locking/unlocking handle (2) down on to opening/closing handle (5) and retract locking/unlocking handle (2). There should be no excessive resistance or binding throughout the movement.