

Project No: **BDHRN002**Job Card No **0065**

Notif.No.: 10049249

Activity: **1054**

Rev No: 20000622

Model.: F900EX

Sheet 1 of 1

A/C Regn: **D-AHRN**

Serial No.: 096

Type: F900EX

Starting Phase: Routine

Starting Work Centre: FALCON A/C TEAM

Job Description: Download Eng 1 DEEC ECTM

ETOPS A/C: No

RVSM A/C: No

Warranty: -

ATA: 76

Work Center	
FALCON A/C	

Zone: 200,400

Corrective Action

0001	Task carried out in accordance with the attached Customer Card that quotes the Operator code detailed below.					 Order: 80069362 Operation: 0010 Phase: Routine - scheduling activity Work Center:FALCON A/C TEAM
	Accomplished		Inspected			
	Pers. No.	Date	Pers. No.	Date		
	Stamp		Stamp			

Completed & Confirmed on SAP IAW MOE 2.13.

Defect Card Raised

Components Removed/Installed

	Part Number	Part Name	S/N	Location	Comm. Off/On
OFF					
ON					
OFF					
ON					
OFF					
ON					
OFF					
ON					

Occurance Report Raised? YES ☐

Operations Above & Notifications Completed IAW MOE 2.13.



OEM Code: 761210

Operator Code: 761210

Form No: JA-SAP-MTX-002

Printed by: ADAMOVIC G



Printed: 03.09.2012

13:34:17

Print No: 1

Project No: **BDHRN002**Job Card No **0066**

Notif.No.: 10049250

Activity: **1055**

Rev No: 20000622

Model.: F900EX

Sheet 1 of 1

A/C Regn: **D-AHRN**

Serial No.: 096

Type: F900EX

Starting Phase: Routine

Starting Work Centre: FALCON A/C TEAM

Job Description: Download Eng 2 DEEC ECTM

ETOPS A/C: No

RVSM A/C: No

Warranty: -

ATA: 76

Work Center	
FALCON A/C	

Zone: 200,400

Corrective Action

0001	Task carried out in accordance with the attached Customer Card that quotes the Operator code detailed below.					 Order: 80069363 Operation: 0010 Phase: Routine - scheduling activity Work Center:FALCON A/C TEAM
	Accomplished		Inspected			
	Pers. No.	Date	Pers. No.	Date		
	Stamp		Stamp			

Completed & Confirmed on SAP IAW MOE 2.13.

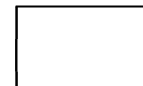
Defect Card Raised

Components Removed/Installed

	Part Number	Part Name	S/N	Location	Comm. Off/On
OFF					
ON					
OFF					
ON					
OFF					
ON					
OFF					
ON					

Occurance Report Raised? YES ☐

Operations Above & Notifications Completed IAW MOE 2.13.



OEM Code: 761210

Operator Code: 761210

Form No: JA-SAP-MTX-002

Printed by: ADAMOVIC G



Printed: 03.09.2012

13:34:17

Print No: 1

Project No: **BDHRN002**Job Card No **0135**

Notif.No.: 10049119

Activity: **1004**

Rev No: 20000622

Model.: F900EX

Sheet 1 of 1

A/C Regn: **D-AHRN**

Serial No.: 096

Type: F900EX

Starting Phase: Functions

Starting Work Centre: FALCON A/C TEAM

Job Description: FNC Bag Compt NPR Valve LH-Side

ETOPS A/C: No

RVSM A/C: No

Warranty: -

ATA: 21

Work Center	
FALCON A/C	

Zone: 200

Corrective Action

0001	Task carried out in accordance with the attached Customer Card that quotes the Operator code detailed below.					 Order: 80069243 Operation: 0010 Phase: Functions - scheduling activity Work Center:FALCON A/C TEAM
	Accomplished		Inspected			
	Pers. No.	Date	Pers. No.	Date		
	Stamp		Stamp			

Completed & Confirmed on SAP IAW MOE 2.13.

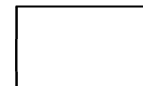
Defect Card Raised

Components Removed/Installed

	Part Number	Part Name	S/N	Location	Comm. Off/On
OFF					
ON					
OFF					
ON					
OFF					
ON					
OFF					
ON					

Occurance Report Raised? YES ☐

Operations Above & Notifications Completed IAW MOE 2.13.



OEM Code: 21-32-37-720-801-01

Operator Code: 21-32-37-720-801-01

Form No: JA-SAP-MTX-002

Printed by: ADAMOVIC G



Printed: 03.09.2012

13:34:17

Print No: 1

Operator: HERON AVIATION		Work Card No.: 21.270
Serial No.: 096	Model: FALCON 900EX	
Reg No.: D-AHRN	Workorder No.: _____	

	Date	A/C HRS	AFL	APH			
Due At		4000					
Accomplished							

TECHNICIAN SIGNATURE: _____ KIND OF CERTIFICATE & NO.: _____

INSPECTED BY: _____ KIND OF CERTIFICATE & NO.: _____

213816	LH BAGGAGE COMPARTMENT NEGATIVE PRESSURE RELIEF VALVE	AMM 21-32-37-900-801
--------	-------------------------------------------------------	----------------------

REASON REMOVED: (CHECK ONE)	<input type="checkbox"/> TIME EXPIRED	<input type="checkbox"/> FAILURE	<input type="checkbox"/> WORN	<input type="checkbox"/> LOANER	<input type="checkbox"/> SCHEDULING CONV
	<input type="checkbox"/> MOD/UPGRADE	<input type="checkbox"/> SERVICE	<input type="checkbox"/> ENGINE CHANGE	<input type="checkbox"/> TIRE CHANGE	<input type="checkbox"/> SWAP/TRBLE SHOOT <input type="checkbox"/> DAMAGED <input type="checkbox"/> UNKNOWN

If removed P/N & S/N information is incorrect please provide details below.

REMOVED P/N		2827A01	S/N		1107	LABOR-HRS		
INSTALLED P/N			S/N			PART COST\$		
INSTALLED TSN	MOS	INSTALLED TSO	MOS	TIME SINCE REPAIR	MOS	WARRANTY TIME REMAINING	MOS	
	HRS		HRS		HRS		HRS	
	LDGS		LDGS		LDGS		LDGS	
						TECH:		INSP:

REMARKS : _____

Note: INITIAL THE SERVICE TASKS BELOW WHICH WERE ACCOMPLISHED DURING CHANGE. IF TASKS WERE NOT ACCOMPLISHED, RECORD TIME ACCRUED SINCE TASK WAS LAST ACCOMPLISHED OR CHECK CONTINUE TIME (CT).

TECH	INSP	LABOR-HRS	TIME	CONTINUE
		HRS.MINS	ACCRUED	TIME

>21-32-37-720-801- 01 FUNCTIONAL TEST LH BAGGAGE COMPARTMENT NEGATIVE PRESSURE RELIEF VALVE

☐

REMARKS : _____

AMM 21-32-37-720-801

Operator: **HERON AVIATION**

Work Card No.: **21.270**

Serial No.: **096**

Model: **FALCON 900EX**

Reg No.: **D-AHRN**

Workorder No.: _____

ACCESS PANEL SUMMARIES

280BZ INTERNAL DOORS DOOR

213816 LH BAGGAGE COMPARTMENT NEGATIVE PRESSURE RELIEF VALVE

21-32-37-720-801-01 FUNCTIONAL TEST LH BAGGAGE COMPARTMENT NEGATIVE PRESSURE RELIEF VALVE

AREA SUMMARIES

F6 BAGGAGE COMPARTMENT

213816 LH BAGGAGE COMPARTMENT NEGATIVE PRESSURE RELIEF VALVE

SOURCE SUMMARIES

956 MPD 05-20-21 PAGE NO.:PAGE 3/4 REF: 21-30 PRESSURIZATION DATE: MAR 09/2012 2

21-32-37-720-801-01 FUNCTIONAL TEST LH BAGGAGE COMPARTMENT NEGATIVE PRESSURE RELIEF VALVE

FALCON 900EX AIRCRAFT MAINTENANCE MANUAL

TASK 21-32-37-900-801

REMOVAL / INSTALLATION OF THE BAGGAGE COMPARTMENT NEGATIVE PRESSURE RELIEF VALVES

1. OVERVIEW OF THE JOB

Operation codes:

- 21-32-37-900-801-01 LH negative pressure relief valve (**L508HP**)
- 21-32-37-900-801-02 RH negative pressure relief valve (**R508HP**)

Refer to **fig. 1**

This procedure describes the removal/Installation of the baggage compartment negative pressure relief valves (**L508HP**)/(**R508HP**).

NOTE: Two operators are required for this operation if the valves are secured with self-locking nuts instead of captive nuts (1) at frame 30:

- one operator to hold the self-locking nuts through doors (**515AB**) and (**516AB**).
- one operator in the baggage compartment to remove/install the negative pressure relief valve.

2. LOGISTICS

A. References

Reference	Designation
• 21-30-00-790-803	PRESSURIZATION LEAK TEST

B. Tools and Ground Support Equipment

Reference	Designation	Quantity
• F7XC202000008	TOOL BOX	

C. Ingredients and Consumable Products

Designation	Additional designation
• MINERAL GREASE	
• CLEANER	MULTIPURPOSE

D. Spare Parts

Reference	Designation	Quantity
• FGFB722001002	SEAL	

E. Additional Spare Parts

Reference	Designation	Quantity
• MS21044D3	SELF-LOCKING NUT	6

F. Energy

- ELECTRICAL
- PNEUMATIC

G. Access

Reference	Designation
-----------	-------------

FALCON 900EX AIRCRAFT MAINTENANCE MANUAL

- | | |
|----------------|----------------------------------------------|
| • 280DZ | BAGGAGE COMPARTMENT UPPER LINING ACCESS DOOR |
| • BAG | BAGGAGE COMPARTMENT DOOR |
| • 515AB | REAR OVER-PYLON ACCESS PANEL |
| • 516AB | REAR OVER-PYLON ACCESS PANEL |

H. Miscellaneous

- LINT-FREE CLOTH (LOCAL PROCUREMENT)

3. PRELIMINARY STEPS

- A. Remove doors (**515AB**) and (**516AB**).
- B. Remove trim panel (**280DZ**).

4. REMOVAL

Refer to **fig. 1**

- A. For negative pressure relief valves secured with self-locking nuts:
 - (1) Through doors (**515AB**) and (**516AB**), hold and remove the self-locking nuts at the rear part of frame 30.
 - (2) Remove screws (4), washers (3), and protector (2).
- B. For negative pressure relief valves secured with captive nuts (1):
 - (1) Remove screws (4), washers (3), and protector (2).
- C. Remove the negative pressure relief valve (**L508HP**)/(**R508HP**).
- D. Remove and discard the seal.

5. PREPARATION BEFORE INSTALLATION

- A. Clean the valve mounting base at frame 30 with **cleaner**.
- B. Wipe with a lint-free cloth.

6. TEST

- A. Press the negative pressure relief valve (**L508HP**)/(**R508HP**) and check that:
 - (1) the spring operates correctly,
 - (2) the valve is applied against its seat.

7. INSTALLATION

Refer to **fig. 1**

- A. Install a new seal (**FGFB722001002**) lubricated with **mineral grease**.

FALCON 900EX AIRCRAFT MAINTENANCE MANUAL

- B. Insert the negative pressure relief valve (**L508HP**)/(**R508HP**) into its housing.
- C. For negative pressure relief valves secured with self-locking nuts:
 - (1) Install protector (2), washers (3) and screws (4).
 - (2) Through doors (**515AB**) and (**516AB**), install and hold the self-locking nuts (**MS21044D3**) at the rear part of frame 30.
 - (3) Tighten the self-locking nuts (**MS21044D3**).
- D. For negative pressure relief valves secured with captive nuts (1):
 - (1) Install protector (2), washers (3) and screws (4).
 - (2) Tighten screws (4).

8. FINAL STEPS

- A. Perform a pressurization leak test (Refer to **TASK 21-30-00-790-803**).

NOTE: Through doors (**515AB**) and (**516AB**), check for leaks by hand at the rear part of the negative pressure relief valve (**L508HP**)/(**R508HP**).

- B. Install trim panel (**280DZ**).
- C. Install doors (**515AB**) and (**516AB**).

FALCON 900EX AIRCRAFT MAINTENANCE MANUAL

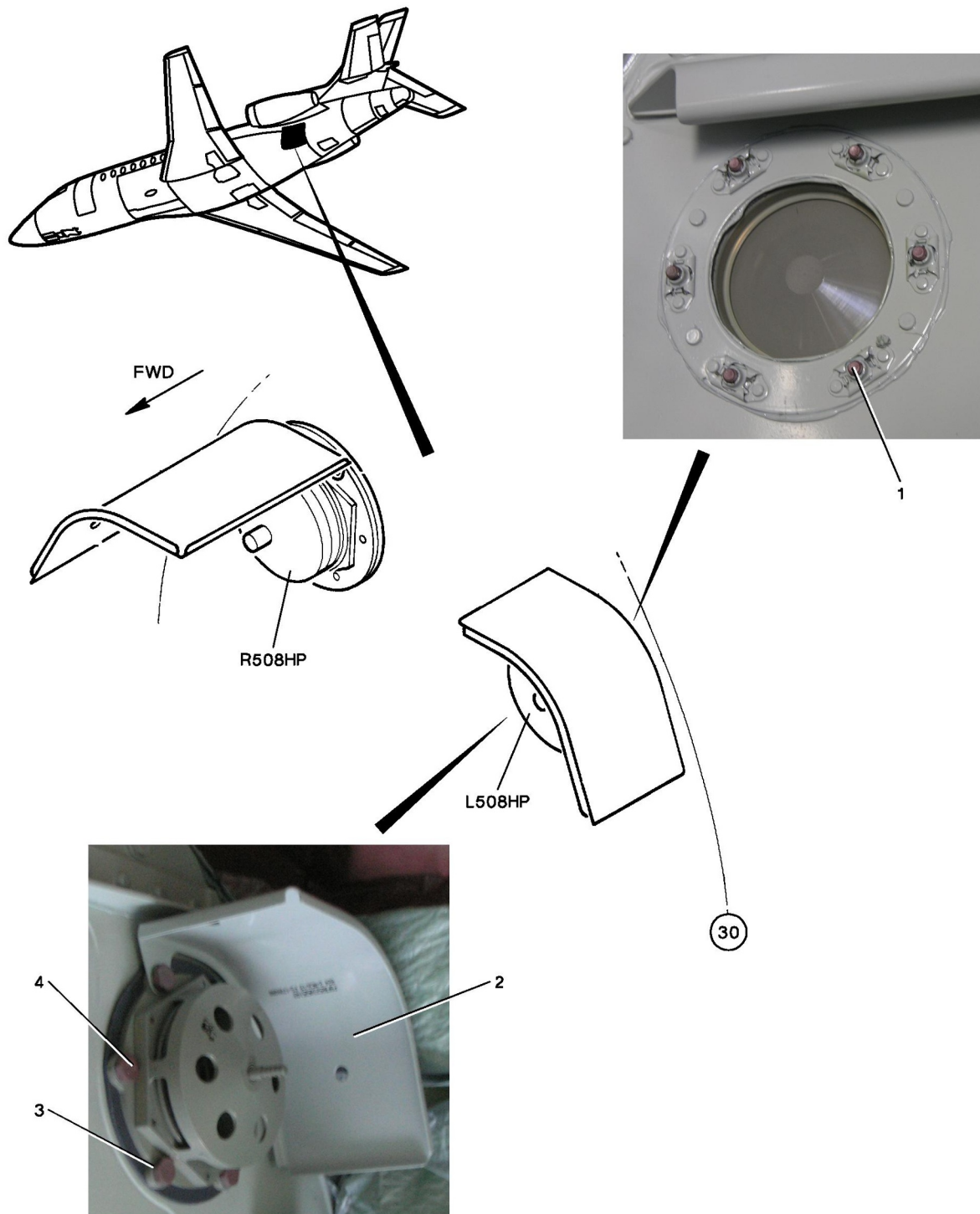


Figure 1: Location of negative pressure relief valves

FALCON 900EX AIRCRAFT MAINTENANCE MANUAL

TASK 21-32-37-720-801

FUNCTIONAL TEST OF THE BAGGAGE COMPARTMENT NEGATIVE PRESSURE RELIEF VALVES

1. OVERVIEW OF THE JOB

Operation codes:

- 21-32-37-720-801-01 LH negative pressure relief valve (**L508HP**)
- 21-32-37-720-801-02 RH negative pressure relief valve (**R508HP**)

This operation must be performed by an authorized Repair Agent.

For Removal/Installation of the negative pressure relief valve, refer to the AMM (Refer to **TASK 21-32-37-900-801**).