

Project No: **BDHRN002**Job Card No **0076**

Notif.No.: 10049069

Activity: **1002**

Rev No: 20000622

Model.: F900EX

Sheet 1 of 1

A/C Regn: **D-AHRN**

Serial No.: 096

Type: F900EX

Starting Phase: Routine

Starting Work Centre: FALCON A/C TEAM

Job Description: **GVI Mech Serv Compartment**

ETOPS A/C: No

RVSM A/C: No

Warranty: -

ATA: 53

Check Type: 1A+ Inspection

Work Center	
FALCON A/C	

Zone: 300**Access Required for this task:**

MSD,PAX

Corrective Action

0001	Task carried out in accordance with the attached Customer Card that quotes the Operator code detailed below.					 Order: 80069234 Operation: 0010 Phase: Routine - scheduling activity Work Center:FALCON A/C TEAM
	Accomplished		Inspected			
	Pers. No.	Date	Pers. No.	Date		
	Stamp		Stamp			

Completed & Confirmed on SAP IAW MOE 2.13.

Defect Card Raised

Components Removed/Installed

	Part Number	Part Name	S/N	Location	Comm. Off/On
OFF					
ON					
OFF					
ON					
OFF					
ON					
OFF					
ON					

Occurance Report Raised? YES ☐

Operations Above & Notifications Completed IAW MOE 2.13.



OEM Code: 53-50-00-210-804

Operator Code: 53-50-00-210-804-01

Form No: JA-SAP-MTX-002

Printed by: ADAMOVIC G



Printed: 03.09.2012

13:34:17

Print No: 1

Operator: **HERON AVIATION**

Work Card No.: **53-50-00-210-804-01C**

Serial No.: **096**

Model: **FALCON 900EX**

Reg No.: **D-AHRN**

Workorder No.: _____

	Date	A/C HRS	AFL	APH			
Due At	27-OCT-2012						
Accomplished							

TECHNICIAN SIGNATURE: _____ KIND OF CERTIFICATE & NO.: _____

INSPECTED BY: _____ KIND OF CERTIFICATE & NO.: _____

TECH	INSP	LABOR-HRS HRS.MINS
------	------	-----------------------

53-50-00-210-804-01 ☐ GENERAL VISUAL INSPECTION OF THE MECHANIC'S SERVICING COMPARTMENT

REMARKS : _____

AMM 53-50-00-210-804

>53-50-00-210-804-01C ☐ GENERAL VISUAL INSPECTION OF THE MECHANIC'S SERVICING COMPARTMENT
CPCP

REMARKS : _____

AMM 53-50-00-210-804

Operator: **HERON AVIATION**

Work Card No.: **53-50-00-210-804-01C**

Serial No.: **096**

Model: **FALCON 900EX**

Reg No.: **D-AHRN**

Workorder No.: _____

ACCESS PANEL SUMMARIES

351AZ INTERNAL DOORS DOOR

53-50-00-210-804-01 GENERAL VISUAL INSPECTION OF THE MECHANIC'S SERVICING COMPARTMENT

AREA SUMMARIES

F7 MECHANIC'S SERVICING COMPARTMENT

53-50-00-210-804-01 GENERAL VISUAL INSPECTION OF THE MECHANIC'S SERVICING COMPARTMENT

SOURCE SUMMARIES

956 MPD 05-10-53 PAGE NO.:PAGE 4/5 REF: 53-50 T5 SECTION DATE: MAR 09/2012 2

53-50-00-210-804-01 GENERAL VISUAL INSPECTION OF THE MECHANIC'S SERVICING COMPARTMENT

956 MPD 05-15 ANNEX 1 PAGE NO.:1/2 REF: STANDARD AIRCRAFT BASELINE CPCP DATE: MAR 9/2012 2

53-50-00-210-804-01 GENERAL VISUAL INSPECTION OF THE MECHANIC'S SERVICING COMPARTMENT

C

FALCON 900EX AIRCRAFT MAINTENANCE MANUAL

TASK 53-50-00-210-804

GENERAL VISUAL INSPECTION OF THE MECHANIC'S SERVICING COMPARTMENT

**WARNING: PERSONNEL INJURIES CAN RESULT FROM OPERATIONS ON FLIGHT CONTROLS EVEN IN A NON-PRESSURIZED MODE.
HYDRAULIC AND ELECTRICAL POWER SUPPLIES ARE PROHIBITED WHEN CHECKING THE FLIGHT CONTROLS IN THIS AREA.**

CAUTION: ELECTRICAL AND HYDRAULIC POWER SUPPLIES ARE PROHIBITED.

1. OVERVIEW OF THE JOB

Operation code: 53-50-00-210-804-01

2. LOGISTICS

A. References

Reference	Designation
• <u>20-33-00-300-801</u>	LAGGING OF AIR CONDITIONING LINES
• <u>27-00-00-220-801</u>	VISUAL INSPECTION OF FLIGHT CONTROL HYDRAULIC COMPONENTS FOR EXTERNAL LEAKS

B. Tools and Ground Support Equipment

Reference	Designation	Quantity
• <u>F7XC202000008</u>	TOOL BOX	
• <u>FGFB912001A4</u>	FUEL TANK SUMP DRAINING TOOL	
OR <u>FGFB912001A5</u>	FUEL TANK SUMP DRAINING TOOL	
• <u>TO-25-952</u>	VACUUM CLEANER	
• <u>DI1015</u>	TOOL SET FOR HYDRAULIC RESERVOIR FILLING	IOB

C. Ingredients and Consumable Products

Designation	Additional designation
• <u>SCOTCH BRITE</u>	MIL-A-9162
• <u>LOCKWIRE</u>	MS20995C32

D. Access

Reference	Designation
• <u>MSD</u>	SERVICING COMPARTMENT DOOR
• <u>PAX</u>	PASSENGER DOOR

E. Miscellaneous

- SAFETY PLACARD (LOCAL PROCUREMENT)

FALCON 900EX AIRCRAFT MAINTENANCE MANUAL

3. PRELIMINARY STEP

- A. Place in evidence a "DANGER, DO NOT OPERATE FLIGHT CONTROLS" safety placard on the cockpit pedestal.

4. STRUCTURE

Refer to **fig. 1**, **fig. 2** and **fig. 3**

CAUTION: DETECTION OF A CRACK ENTAILS SYSTEMATIC REPAIR.
REPLACE ALL DEFECTIVE RIVETS.

- A. Check for:
- condition of paint,
 - corrosion on the structure, especially under the access doors,
 - loose or missing rivets,
 - scoring or cracks,
 - attachments and safetying,
 - integrity of the elements.
- B. Fuel tank (**fig. 1**):
- check lower and upper fittings (1),
 - check upper adjustable rods (2),
 - check bonding braids (3).
- C. Frame 30
- Check accessible structures at the back of bulkhead frame 30:
- junctions with stringers and skins,
 - pressure-sealed feedthroughs.
- D. LH and RH sides between frames 30 and 33
- Check accessible inner structures:
- skin and stringers,
 - junctions with frames 30, 31, 32, 33,
 - frames 31 and 32,
- E. Frame 33
- Check accessible structures at the front of bulkhead frame 33:
- junctions with stringers and skins,
 - pressure-sealed feedthroughs.
- F. Engine 2 air duct (**fig. 2**)
- Check the air duct section crossing the upper section of the compartment:
- the air duct itself (check for blisters or distortion on the air duct vault),
 - inspection door (**351AZ**) (condition, correct locking).
- G. Frame of access door (**MSD**)(**fig. 3**)

FALCON 900EX AIRCRAFT MAINTENANCE MANUAL

- (1) Check the frame of the access door and the junctions with the structure.
- (2) Check the catch accommodating the latch.
- (3) Check draining of the compartment lower section.

5. AIR SYSTEMS

- A. At the upper section of frame 30
 - (1) Visually check condition of piping, lagging, couplings, installation and tightening of clamps.
 - (2) Any tear in the thermal lagging must be repaired (Refer to **TASK 20-33-00-300-801**).
- B. On each side between frames 30 and 33
 - (1) Visually check air ducts for condition, lagging, attachment, coupling and identification.
 - (2) Any tear in the thermal lagging must be repaired (Refer to **TASK 20-33-00-300-801**).
 - (3) Visually check all equipment items for condition, attachment and coupling.
- C. At upper section of frame 33
 - (1) Visually check condition of piping, lagging, attachments, couplings and identification.
 - (2) Any tear in the thermal lagging must be repaired (Refer to **TASK 20-33-00-300-801**).
 - (3) Visually check equipment items for condition, attachment and coupling.

6. ELECTRICAL AND LIGHTING SYSTEMS

Refer to **fig. 4** and **fig. 5**

- A. Check on all equipment items:
 - condition,
 - attachments and safetying,
 - correct connection of connectors,
 - condition and attachment of supports.
- B. Check the wiring for:
 - attachment and cleanliness,
 - physical changes, ageing, overheating marks, distortion, routing and markings,
 - clearance with respect to the surrounding structure, piping and equipment,
 - especially, check wiring routed in the vicinity of hot air ducts.
- C. Check on batteries (**L1PE**) and (**R1PE**) (**fig. 4**):
 - connector plugs,
 - draining and ventilation ducts,
 - battery fan (**4PE**) (condition, attachment and coupling).
- D. Check the lighting system (**fig. 5**)
 - (1) Check the two ceiling lights (**L4LH**) and (**R4LH**) for anomalies:

FALCON 900EX AIRCRAFT MAINTENANCE MANUAL

- condition of protective grid,
 - lighting cover.
- (2) For A/C with M2518 or SB F900EX-44 , on the RH side of the rear compartment door frame, check spotlight (**21LH**) for anomalies:
- condition of protective cover,
 - lighting cover.

7. FUEL SYSTEM

Refer to **fig. 6**

- A. Check the system for leaks.
- B. Check piping for condition and attachment (correct tightening of clamps) and "WIGGINS" couplings for safetying.
- C. At frame 33, on the fuel pressurization system, check condition, attachment and coupling of all equipment items.
- D. Check for presence and correct attachment (1) of the fuel tank sumping tool (**FGFB912001A4**) or (**FGFB912001A5**) located under the fuel tank (**fig. 6**).

8. FIRE PROTECTION SYSTEM

Refer to **fig. 7**

- A. Check RH fire detector (**12WG**) and LH fire detector (**13WG**) for condition and attachment.
 - (1) Check the condition of the detector connecting lugs (no break, no incipient break). If protecting sleeves are fitted to the lugs, implement SB F900EX-080 .
 - (2) Check routing of the fire detection wiring. For aircraft without SB F900EX-166 , it is recommended to apply SB F900EX-166 .
- B. Check the fire extinguishers for condition and attachment (correct tightening of percussion head supply and grounding wires).
- C. Check the lines for any visible damage affecting design shape, connection, attachment and identification.
- D. Make sure that the three freon exhaust ports are not clogged.

9. FLIGHT CONTROL SYSTEM

- A. Check on all equipment items (LH side and RH side of rear compartment):
 - external condition,
 - attachments, tightening and safetying,
 - corrosion,
 - correct connection of connectors,
 - hydraulic leaks.

FALCON 900EX AIRCRAFT MAINTENANCE MANUAL

NOTE: If traces of hydraulic fluid are found on the equipment, carry out a static and dynamic sealing test (Refer to **TASK 27-00-00-220-801**).

B. Check on all linkage components (LH side and RH side):

- attachments,
- external condition,
- corrosion,
- tightening of locknuts,
- safetying of hinge pins,
- swivelling links, presence of rod anti-swivel Teflon washers,
- side-play.

NOTE 1: If traces of corrosion are found on chromium-plated sliding parts, replace the affected item of equipment.

NOTE 2: Traces of corrosion on items of equipment can be removed with **scotch brite**.

C. Perform an overall check as follows:

- (1) Check for marks on the airframe structure which may be due to friction of a component during flight control deflection.
- (2) Check for a clearance with respect to surroundings:
 - absence of interference with wirings,
 - absence of interference with pipes,
 - absence of interference with other equipment items.

10. HYDRAULIC SYSTEMS

Refer to **fig. 8**

A. Check the piping for:

- condition,
- attachment,
- correct coupling,
- correct tightening,
- absence of interference with the structure,
- absence of interference with other pipes,
- absence of leaks.

B. Check all hydraulic equipment items and their supports for:

- condition,
- attachment and safetying,
- corrosion,
- leaks.

FALCON 900EX AIRCRAFT MAINTENANCE MANUAL

- C. Check stand-by electrical pump selector valve (**5ML**) for correct position (lever (2) set to "IN FLIGHT") and correct safetying of lever (2) (safety pin (1) for aircraft with SB F900EX-127 (**fig. 6**), or **lockwire** for aircraft without SB F900EX-127).
- D. Check for presence and correct attachment of the hydraulic reservoir filling device (**DI1015**) located on the LH side between frames 31 and 32.

11. FINAL STEPS

- A. Clean the mechanic's servicing compartment if required with a vacuum cleaner.
- B. Remove the "DANGER, DO NOT OPERATE FLIGHT CONTROLS" safety placard from the cockpit pedestal.

FALCON 900EX AIRCRAFT MAINTENANCE MANUAL

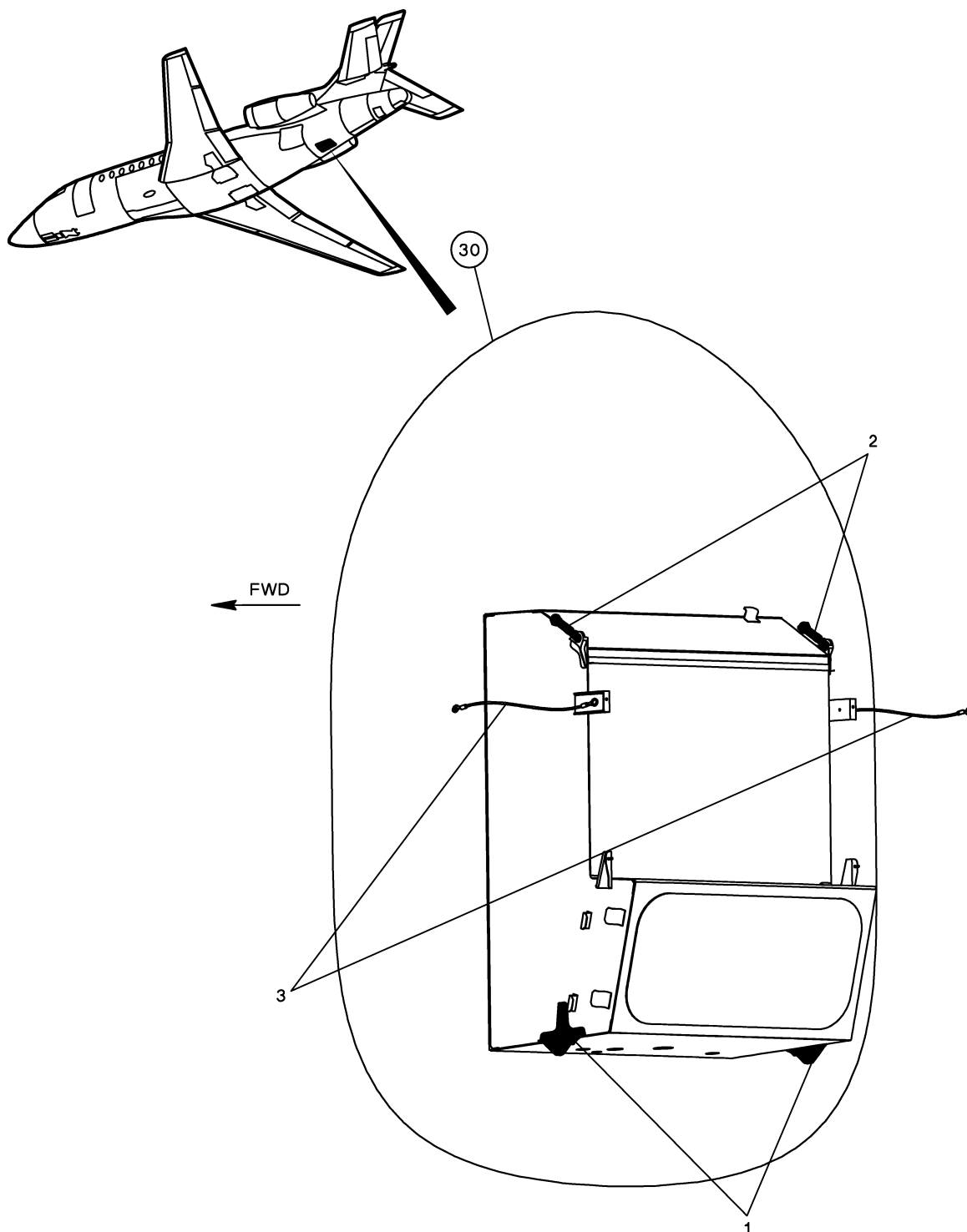


Figure 1: STRUCTURE - FUEL TANK

FALCON 900EX AIRCRAFT MAINTENANCE MANUAL

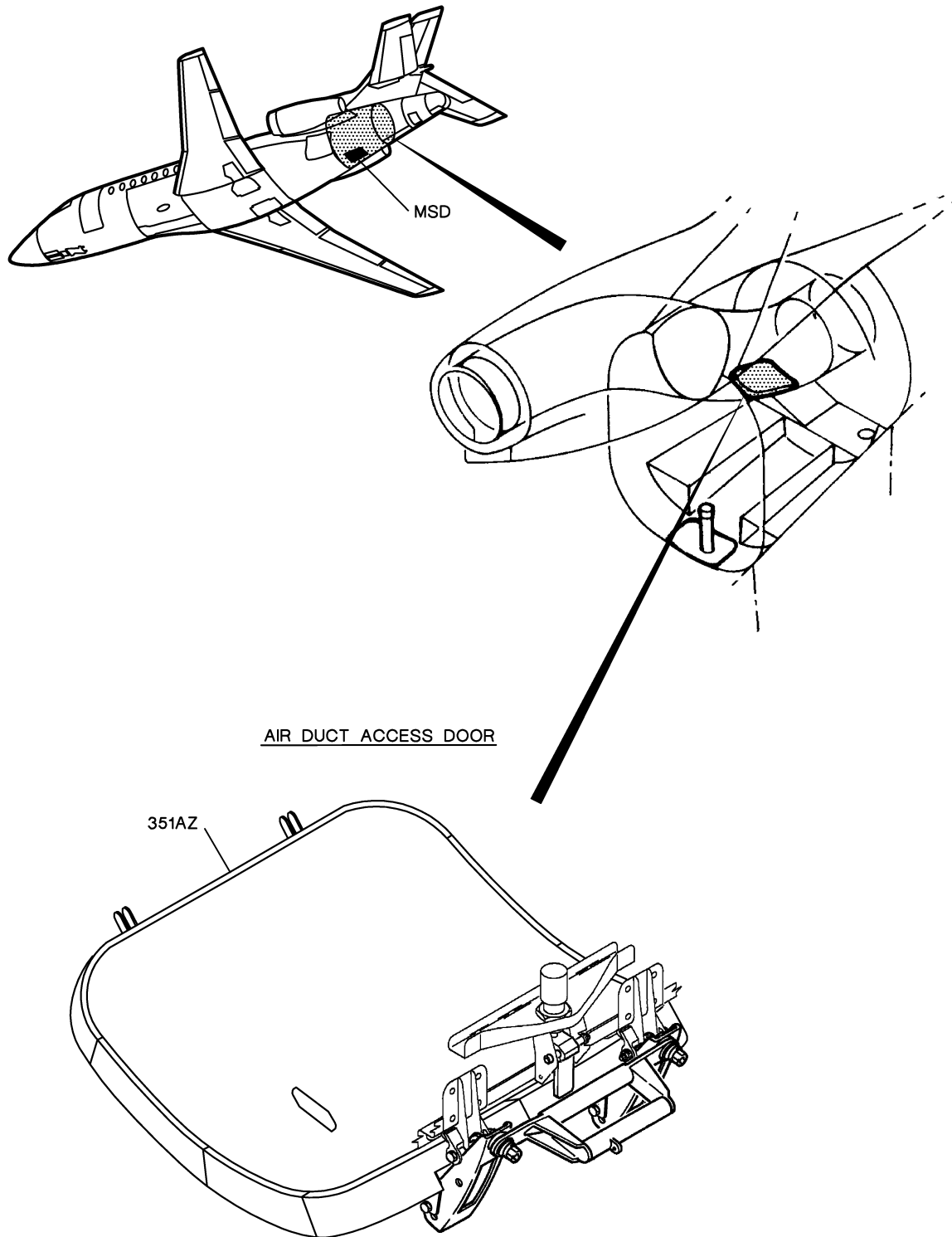


Figure 2: STRUCTURE - LOCATION OF DOOR

FALCON 900EX AIRCRAFT MAINTENANCE MANUAL

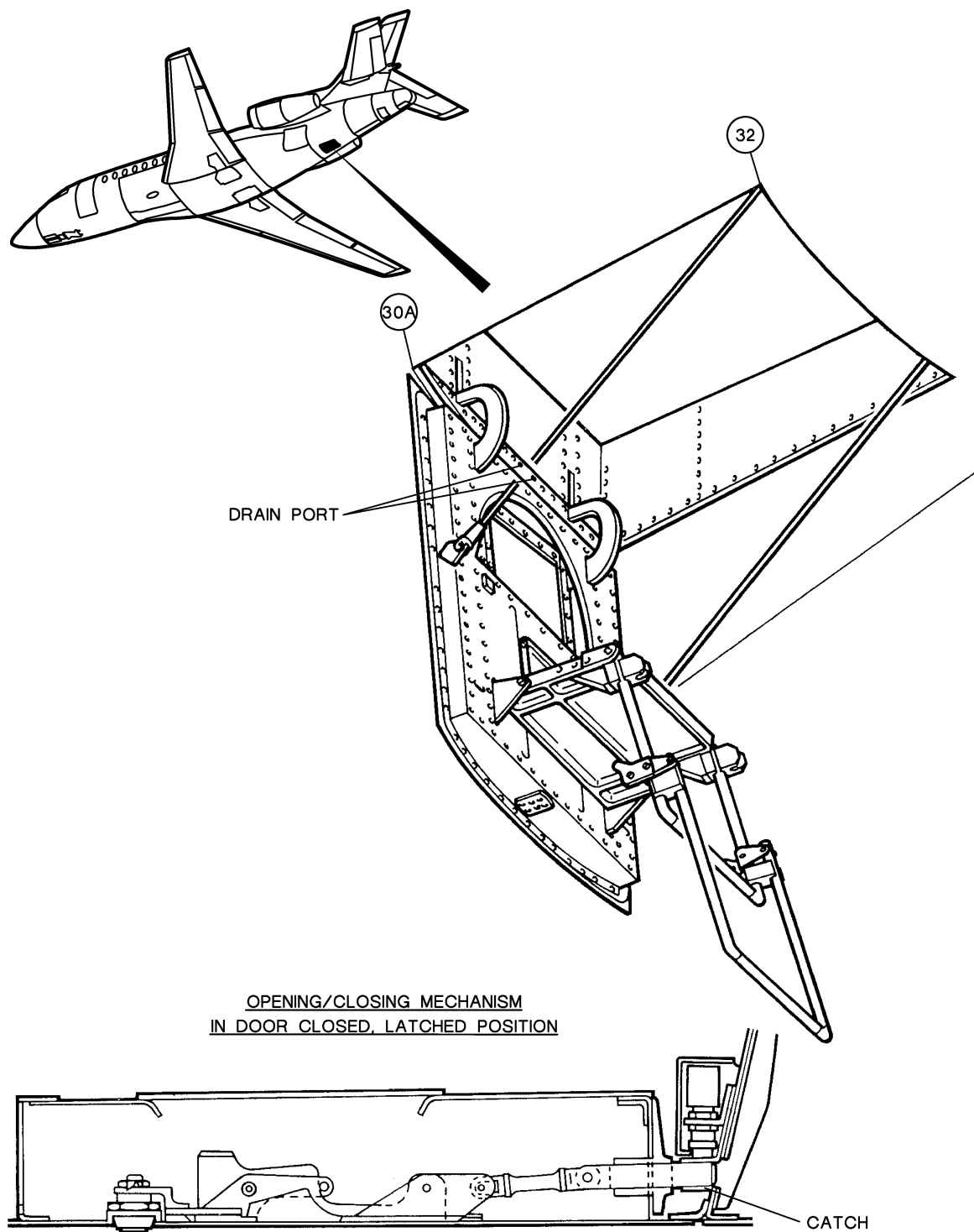


Figure 3: STRUCTURE - FRAME OF MSD DOOR

FALCON 900EX AIRCRAFT MAINTENANCE MANUAL

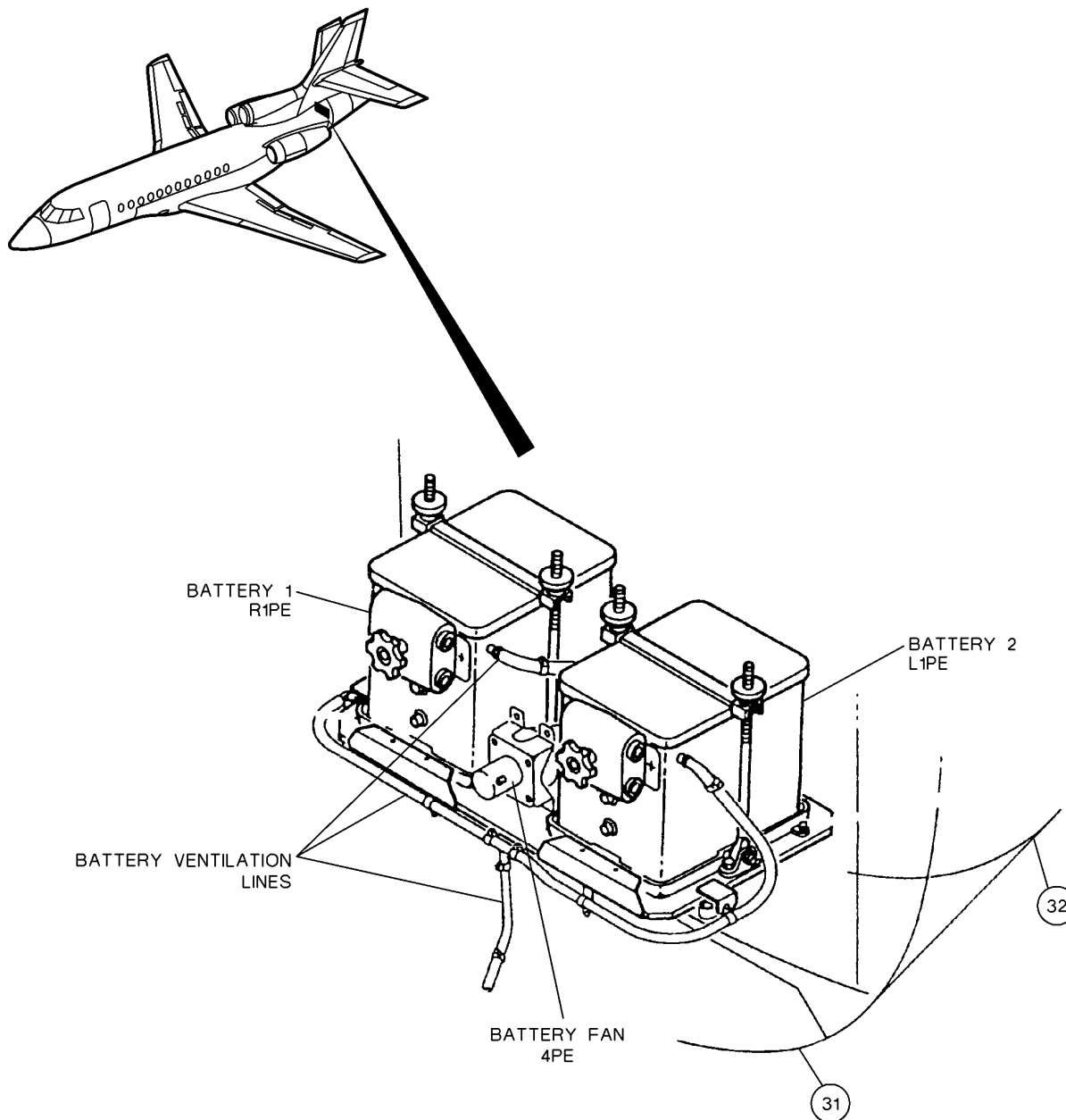


Figure 4: ELECTRICAL POWER - LOCATION OF EQUIPMENT

FALCON 900EX AIRCRAFT MAINTENANCE MANUAL

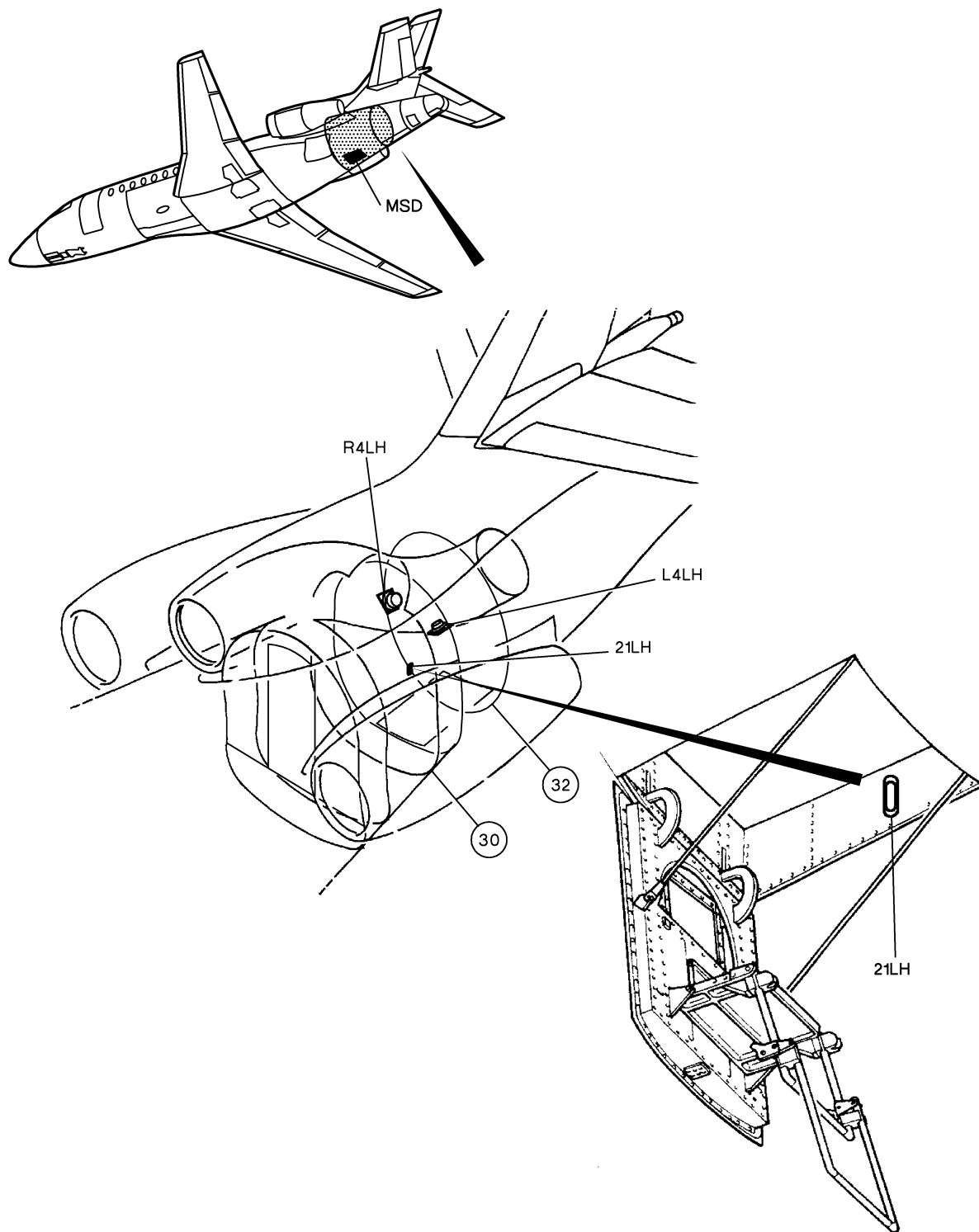


Figure 5: LIGHTING SYSTEM

FALCON 900EX AIRCRAFT MAINTENANCE MANUAL

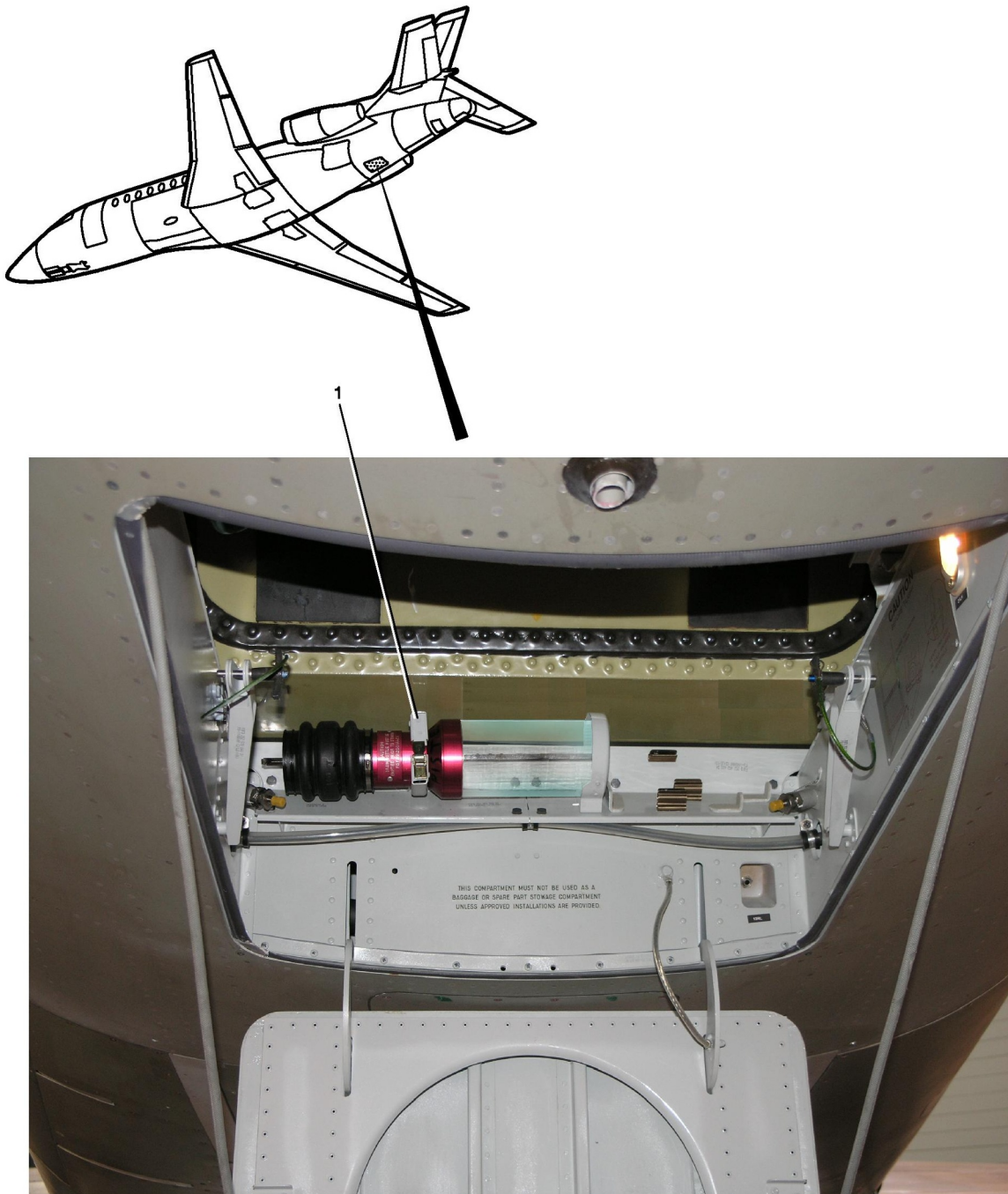


Figure 6: FUEL DRAINING BOTTLE

FALCON 900EX AIRCRAFT MAINTENANCE MANUAL

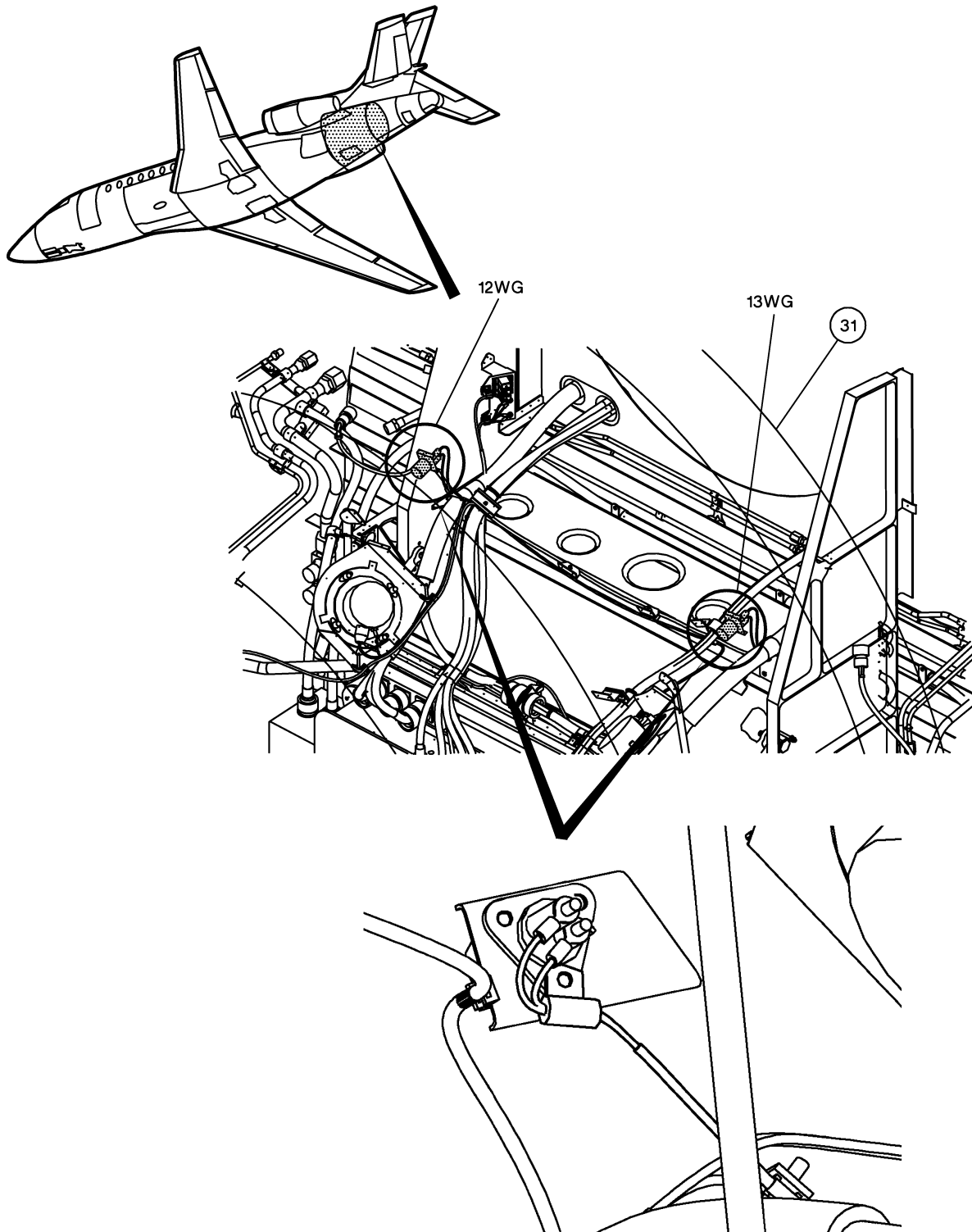


Figure 7: LOCATION OF DETECTORS

FALCON 900EX AIRCRAFT MAINTENANCE MANUAL

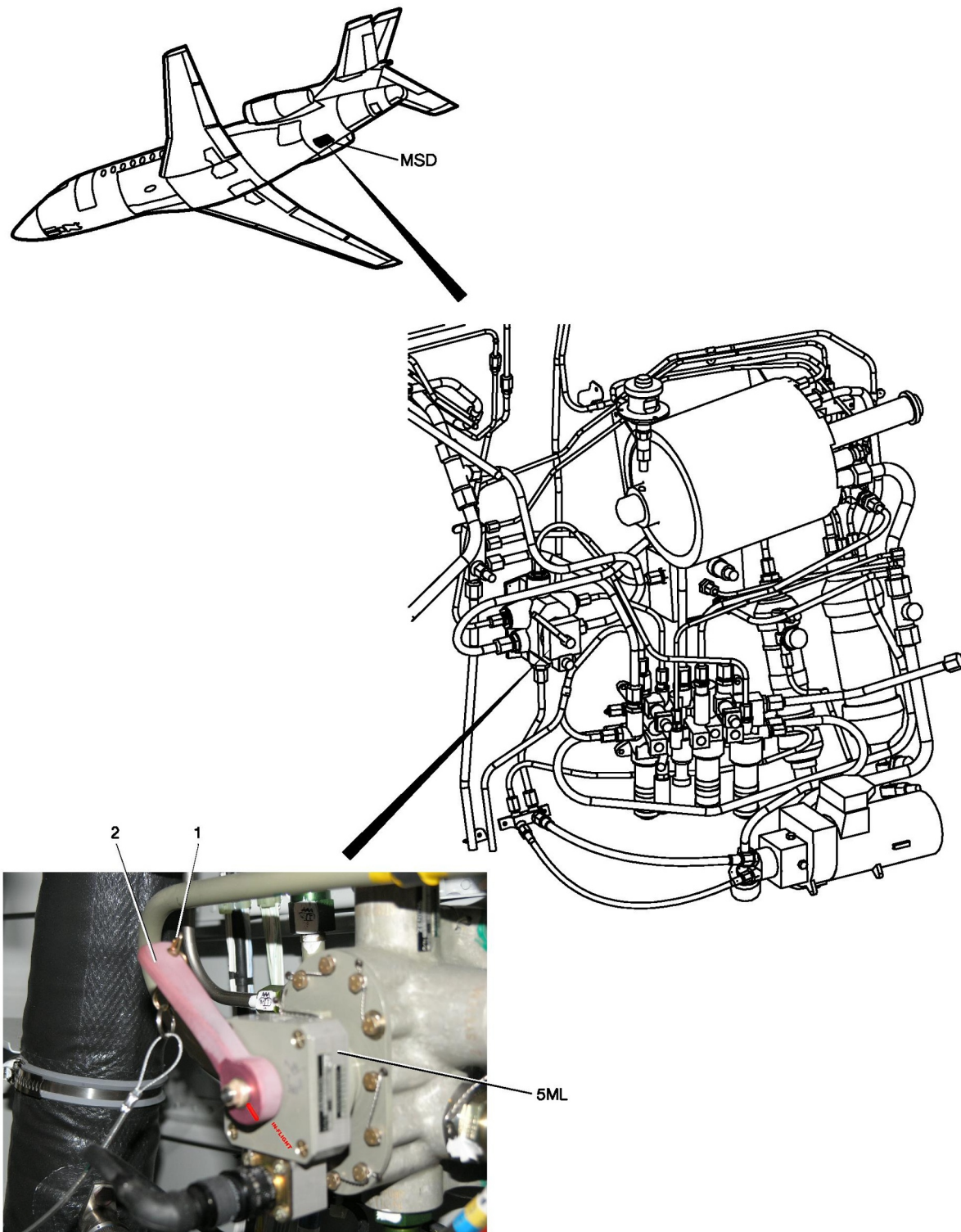


Figure 8: HYDRAULIC SYSTEM